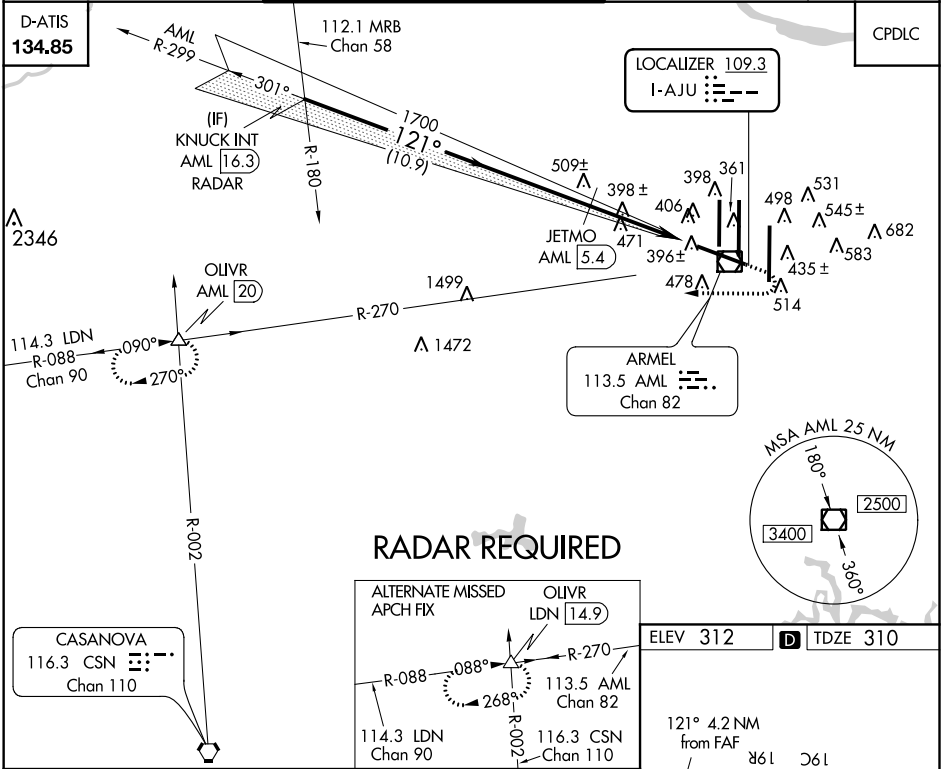


LOC I-AJU 109.3	APP CRS 121°	Rwy Idg TDZE Apt Elev 10501 310 312
---------------------------	------------------------	---

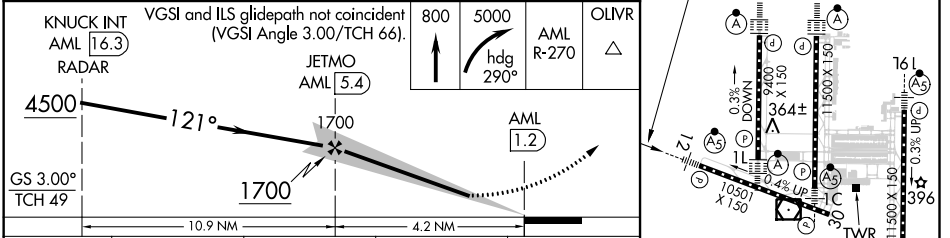
ILS or LOC/DME RWY 12
WASHINGTON DULLES INTL (IAD)

DME from AML VOR/DME. Simultaneous reception of I-AJU and AML DME required.	MALSR	MISSED APPROACH: Climb to 800 then climbing right turn to 5000 via heading 290° and AML VOR/DME R-270 to OLIVR INT/AML 20 DME and hold, continue climb-in-hold to 5000.	
POTOMAC APP CON 120.45 306.925 (241°-330°) 128.525 306.925 (091°-240°) 126.1 338.25 (331°-090°)	DULLES TOWER 120.1 317.8 (Rwys 1R/19L) 120.25 348.6 (Rwy 1C/19C) 134.425 348.6 (Rwys 1L/19R and 12/30)	GND CON 121.9 317.8 (EAST) 121.625 348.6 (WEST)	CLNC DEL 135.7 317.8



NE-3, 31 JAN 2019 to 28 FEB 2019

NE-3, 31 JAN 2019 to 28 FEB 2019



CATEGORY	A	B	C	D
S-ILS 12	510/18 200 (200-½)			
S-LOC 12	740/24	430 (500-½)	740/40	430 (500-¾)
CIRCLING	940-1	628 (700-1)	940-1¾ 628 (700-1¾)	940-2 628 (700-2)

