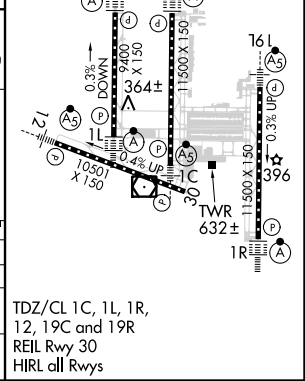
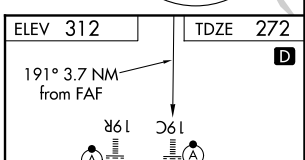
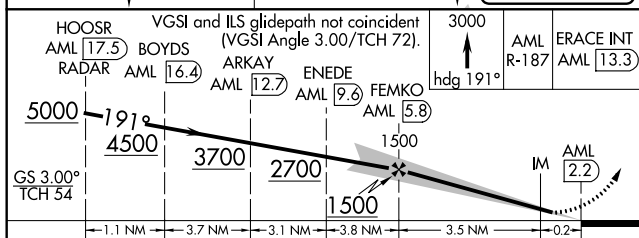
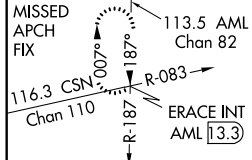
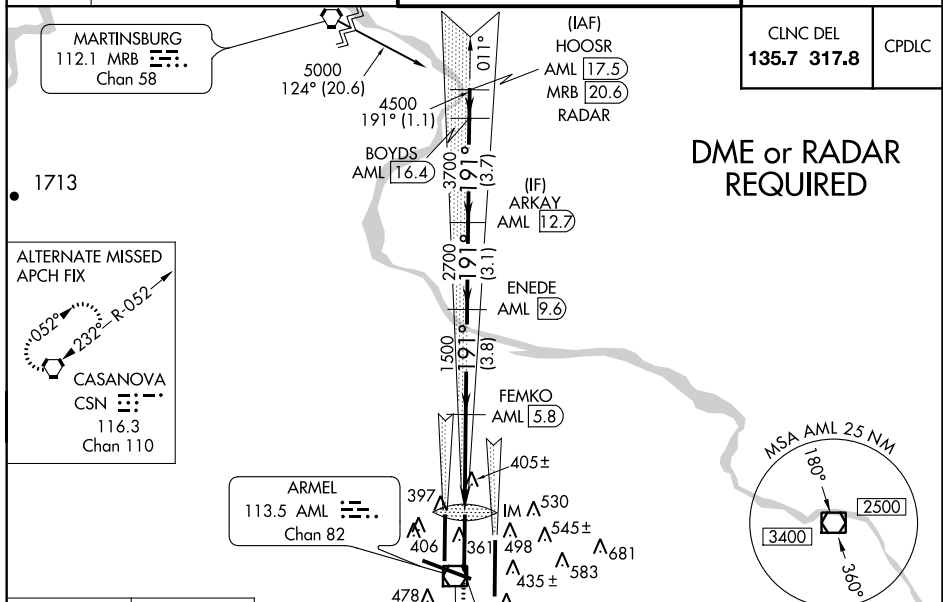


LOC I-DLX 111.3	APP CRS 191°	Rwy Idg 11500 TDZE 272 Apt Elev 312
---------------------------	------------------------	--

ILS or LOC/DME RWY 19C

WASHINGTON DULLES INTL (IAD)

⚠ DME from AML VOR/DME. Simultaneous reception of I-DLX and AML DME required. Simultaneous approach authorized with ILS or LOC Rwy 19L, ILS Rwy 19L (Cat II), ILS or LOC/DME Rwy 19R, ILS Rwy 19R (Cat II), ILS Rwy 19R (Cat III).	ALSF-2 	MISSED APPROACH: Climb to 3000 via heading 191° and AML VOR/DME R-187 to ERACE INT/AML 13.3 DME and hold.



CATEGORY	A	B	C	D
S-ILS 19C	472/18			200 (200-½)
S-LOC 19C	660/24		388 (400-½)	
CIRCLING	940-1 628 (700-1)		940-2 628 (700-2)	
			940-1 ¾ 628 (700-1¾)	

TDZ/CL 1C, 1L, 1R, 12, 19C and 19R REIL Rwy 30 HIRL all Rwys

NE-3, 31 JAN 2019 to 28 FEB 2019

NE-3, 31 JAN 2019 to 28 FEB 2019