

WAAS CH <b>99309</b> <b>W01D</b>	APP CRS <b>011°</b>	Rwy Idg <b>9400</b> TDZE <b>296</b> Apt Elev <b>312</b>
--	------------------------	---

# RNAV (GPS) RWY 1L

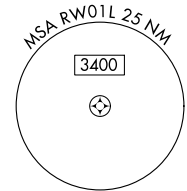
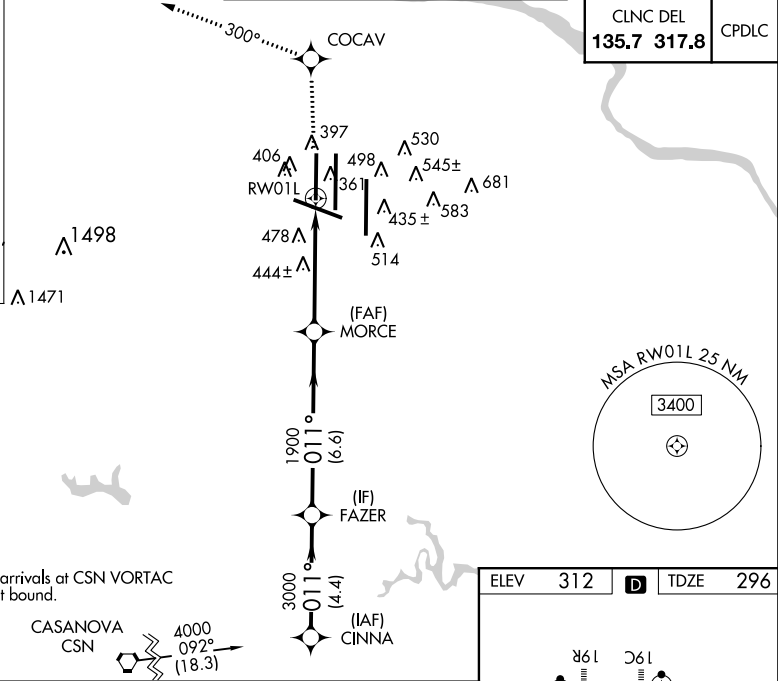
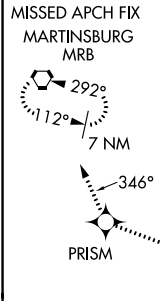
WASHINGTON DULLES INTL (IAD)

▼ For uncompensated Baro-VNAV systems, LNAV/VNAV NA below -15°C (5°F) or above 48°C (118°F). DME/DME RNP-0.3 NA. Simultaneous approach authorized with ILS or LOC Rwy 1R, ILS Rwy 1R (Cat II), ILS Rwy 1R (Cat III). LNAV procedure NA during simultaneous operations. Use of FD or AP providing RNAV track guidance required during simultaneous operations.

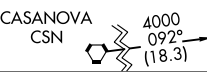
ALSF-2

MISSED APPROACH: Climb to 4000 direct COCAV and on 300° track to PRISM and on 346° track to MRB VORTAC and hold.

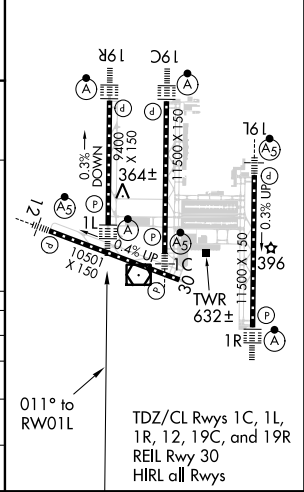
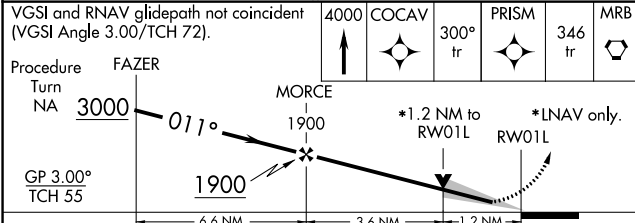
D-ATIS <b>134.85</b>	POTOMAC APP CON <b>120.45 306.925</b> (241°-330°) <b>128.525 306.925</b> (091°-240°) <b>126.1 338.25</b> (331°-090°)	DULLES TOWER <b>120.1 317.8</b> (Rwy 1R/19L) <b>120.25 348.6</b> (Rwy 1C/19C) <b>134.425 348.6</b> (Rwys 1L/19R and 12/30)	GND CON <b>121.9 317.8</b> (EAST) <b>121.625 348.6</b> (WEST)
-------------------------	---	---	---



Procedure NA for arrivals at CSN VORTAC on V286 northwest bound.



ELEV 312	<b>D</b>	TDZE 296
----------	----------	----------



CATEGORY	A	B	C	D
LPV DA		496/18	200 (200-½)	
LNAV/VNAV DA		828/60	532 (600-1¼)	
LNAV MDA	740/24	444 (500-½)	740/40 444 (500-1)	740/50 444 (500-1)
CIRCLING	940-1	628 (700-1)	940-1¾ 628 (700-1¾)	940-2 628 (700-2)

NE-3, 31 JAN 2019 to 28 FEB 2019

NE-3, 31 JAN 2019 to 28 FEB 2019