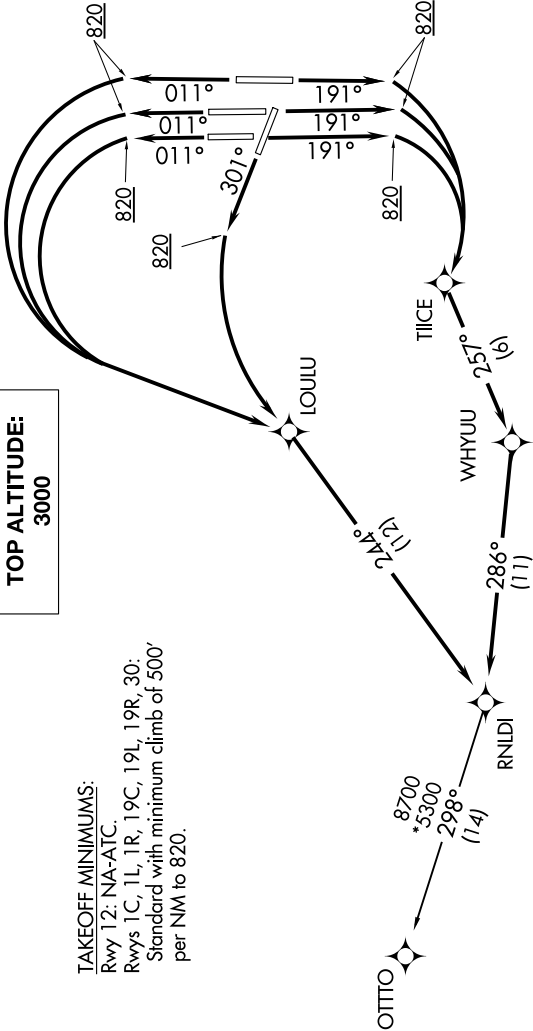


RNLDI FOUR DEPARTURE (RNAV)

NE-3, 31 JAN 2019 to 28 FEB 2019



TOP ALTITUDE:
3000

TAKEOFF MINIMUMS:

Rwy 12: NA-ATC.
 Rwys 1C, 1L, 1R, 19C, 19L, 19R, 30:
 Standard with minimum climb of 500' per NM to 820.

- D-ATIS 134.85
- CLNC DEL 135.7 317.8
- CPDLC
- GND CON 121.9 317.8 (EAST)
- 121.625 348.6 (WEST)
- DULLES TOWER 120.1 317.8 (Rwy 1R/19L)
- 120.25 348.6 (Rwy 1C/19C)
- 134.425 348.6 (Rwys 1L/19R, 12/30)
- POTOMAC DEP CON 126.65 350.2

NOTE: Chart not to scale.

DEPARTURE ROUTE DESCRIPTION

TAKEOFF RWYS 1C/1L/1R: Climb heading 011° to 820, then climbing left turn direct LOULU (or assigned ATC heading), then on track 244° to RNLDI, thence...

TAKEOFF RWYS 19C/19R/19L: Climb heading 191° to 820, then climbing right turn direct TIICE (or assigned ATC heading), then on depicted route to RNLDI, thence...

TAKEOFF Rwy 30: Climb heading 301° to 820, then climbing left turn direct LOULU (or assigned ATC heading), then on track 244° to RNLDI, thence...
 ... maintain 3000. Expect clearance to filed altitude within ten (10) minutes after departure.

OTTO TRANSITION (RNLDI4.OTTO):

- NOTE: DME/DME/IRU or GPS required.
- NOTE: RNAV 1.
- NOTE: Turboprops only.
- NOTE: RADAR required.
- NOTE: Aircraft may be Radar vectored to LOULU, TIICE, WHYUU, RNLDI or OTTO.

RNLDI FOUR DEPARTURE (RNAV)

NE-3, 31 JAN 2019 to 28 FEB 2019