

# RNAV (RNP) Z RWY 19C

WASHINGTON DULLES INTL (IAD)

APP CRS	Rwy ldg	<b>11500</b>
<b>191°</b>	TDZE	<b>272</b>
	Apt Elev	<b>312</b>

GPS required. For uncompensated Baro-VNAV systems, procedure NA below -14°C (6°F) or above 47°C (117°F). For inoperative ALSF, increase RNP 0.30 visibility to 1 3/4. Simultaneous approach authorized with ILS or LOC Rwy 19L, ILS Rwy 19L (Cat II). Use of FD or AP providing RNAV track guidance required during simultaneous operations.

ALSF-2



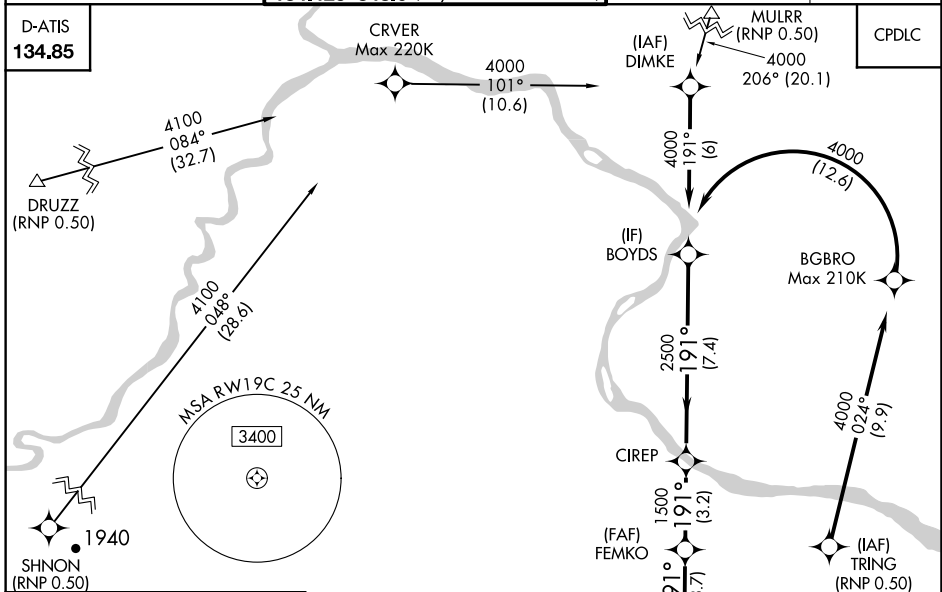
MISSED APPROACH: Climb to 4000 via track 191° to BOPAC and via track 265° to BLUES and hold.

POTOMAC APP CON		
<b>120.45</b>	<b>306.925</b>	(241°-330°)
<b>128.525</b>	<b>306.925</b>	(091°-240°)
<b>126.1</b>	<b>338.25</b>	(331°-090°)

DULLES TOWER		
<b>120.1</b>	<b>317.8</b>	(Rwys 1R/19L)
<b>120.25</b>	<b>348.6</b>	(Rwy 1C/19C)
<b>134.425</b>	<b>348.6</b>	(Rwys 1L/19R and 12/30)

GND CON	
<b>121.9</b>	<b>317.8</b> (EAST)
<b>121.625</b>	<b>348.6</b> (WEST)

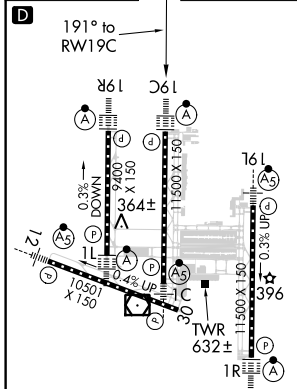
CLNC DEL	
<b>135.7</b>	<b>317.8</b>



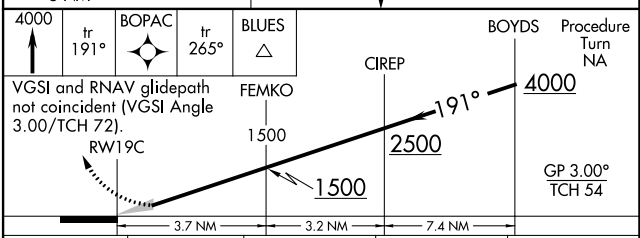
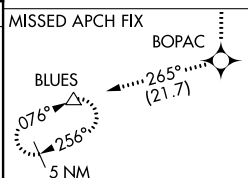
NE-3, 31 JAN 2019 to 28 FEB 2019

NE-3, 31 JAN 2019 to 28 FEB 2019

ELEV 312	TDZE 272
----------	----------



TDZ/CL 1C, 1L, 1R, 12, 19C and 19R  
REIL Rwy 30  
HIRL all Rwys



CATEGORY	A	B	C	D
RNP 0.30 DA	740/60 468 (500-1 1/4)			

**AUTHORIZATION REQUIRED**