

RNAV (RNP) Z RWY 19L

WASHINGTON DULLES INTL (IAD)

APP CRS	Rwy Idg	11500
191°	TDZE	302
	Apt Elev	312

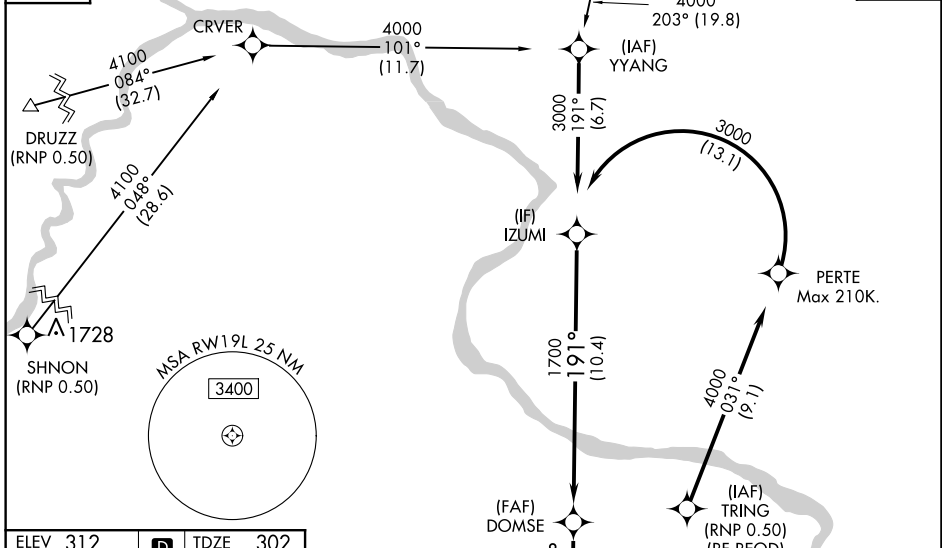
GPS required. For uncompensated Baro-VNAV systems, procedure NA below -14°C (6°F) or above 47°C (118°F). For inoperative MALSR, increase RNP 0.30 visibility to 1½. Simultaneous approach authorized with ILS or LOC/DME Rwy 19R, ILS Rwy 19R (Cat III), ILS Rwy 19R (Cat III). Use of FD or AP providing RNAV track guidance required during simultaneous operations.



MISSED APPROACH: Climb to 2000 via track 191° to WAXIN and hold.

POTOMAC APP CON	DULLES TOWER	GND CON	CLNC DEL
120.45 306.925 (241°-330°)	120.1 317.8 (Rwy 1R/19L)	121.9 317.8 (EAST)	135.7 317.8
128.525 306.925 (091°-240°)	120.25 348.6 (Rwy 1C/19C)	121.625 348.6 (WEST)	
126.1 338.25 (331°-090°)	134.425 348.6 (Rwys 1L/19R and 12/30)		

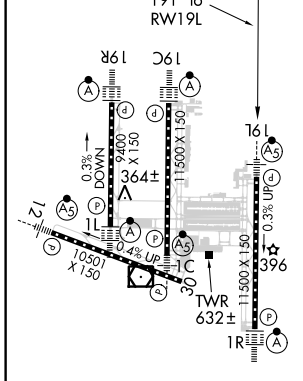
D-ATIS	CPDLC	
134.85		



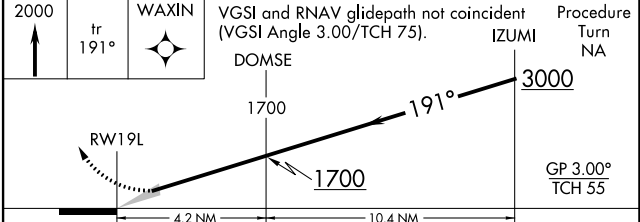
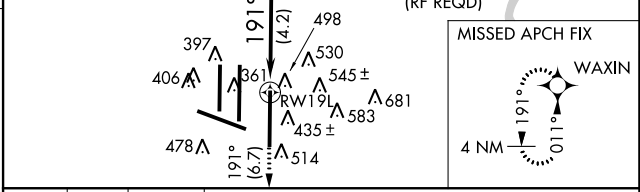
NE-3, 31 JAN 2019 to 28 FEB 2019

NE-3, 31 JAN 2019 to 28 FEB 2019

ELEV 312	D	TDZE 302
----------	----------	----------



TDZ/CL 1C, 1L, 1R, 12, 19C and 19R
REIL Rwy 30
HIRL all Rwys



CATEGORY	A	B	C	D
RNP 0.30 DA	743/50 441 (500-1)			

AUTHORIZATION REQUIRED