


APP CRS	Rwy Idg	<b>11500</b>
<b>011°</b>	TDZE	<b>286</b>
	Apt Elev	<b>312</b>

# RNAV (RNP) Z RWY 1C

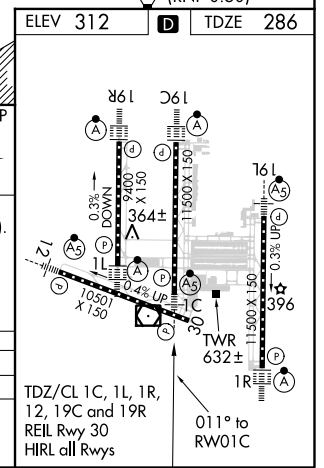
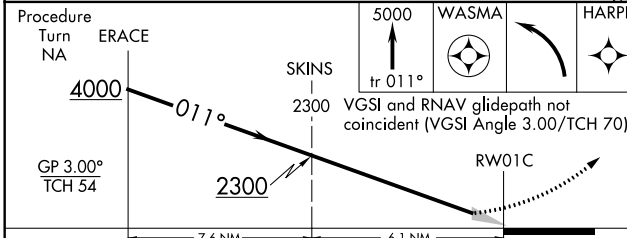
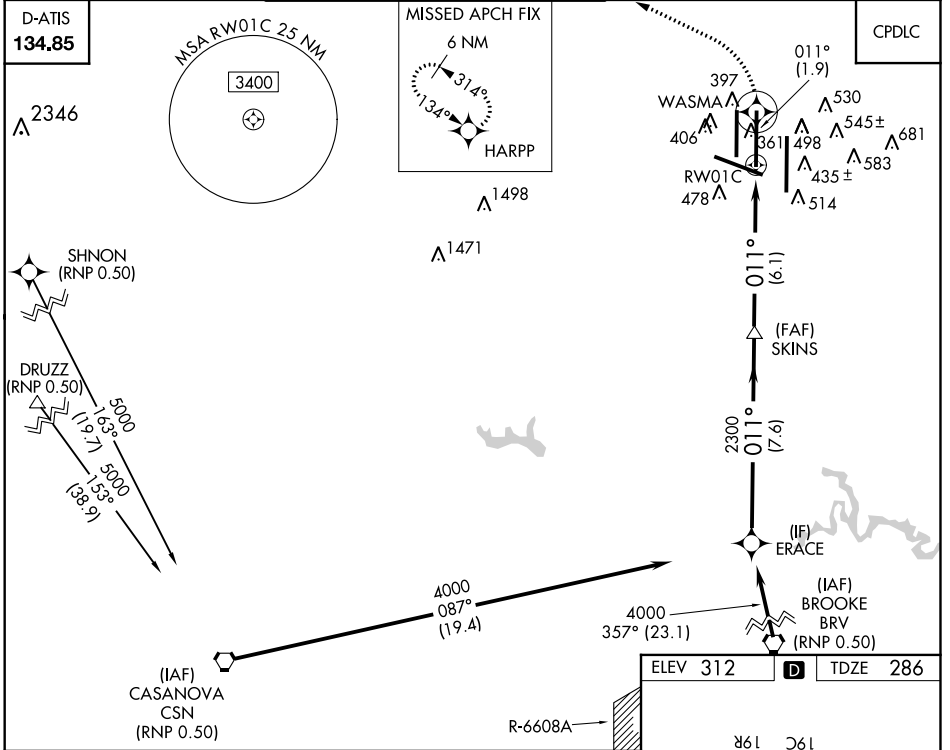
WASHINGTON DULLES INTL (IAD)

▼ For uncompensated Baro-VNAV systems, procedure NA below -14°C (6°F) or above 48°C (119°F). For inoperative ALSF-2, increase RNP 0.30 visibility to 1¾. GPS required. Simultaneous approach authorized with ILS or LOC Rwy 1R, ILS Rwy 1R (Cat II), ILS Rwy 1R (Cat III). Use of FD or AP providing RNAV track guidance required during simultaneous operations.

MALSR 

MISSED APPROACH: Climb to 5000 on track 011° to WASMA and left turn direct HARPP and hold.

POTOMAC APP CON <b>120.45 306.925</b> (241°-330°) <b>128.525 306.925</b> (091°-240°) <b>126.1 338.25</b> (331°-090°)	DULLES TOWER <b>120.1 317.8</b> (Rwy 1R/19L) <b>120.25 348.6</b> (Rwy 1C/19C) <b>134.425 348.6</b> (Rwys 1L/19R and 12/30)	GND CON <b>121.9 317.8</b> (EAST) <b>121.625 348.6</b> (WEST)	CLNC DEL <b>135.7 317.8</b>
---	---	---	--------------------------------



CATEGORY	A	B	C	D
RNP 0.30 DA	817-1½ 531 (600-1½)			

**AUTHORIZATION REQUIRED**

NE-3, 31 JAN 2019 to 28 FEB 2019

NE-3, 31 JAN 2019 to 28 FEB 2019