

WAAS CH 40305 W19B	APP CRS 191°	Rwy Idg 11500 TDZE 272 Apt Elev 312
--	------------------------	--

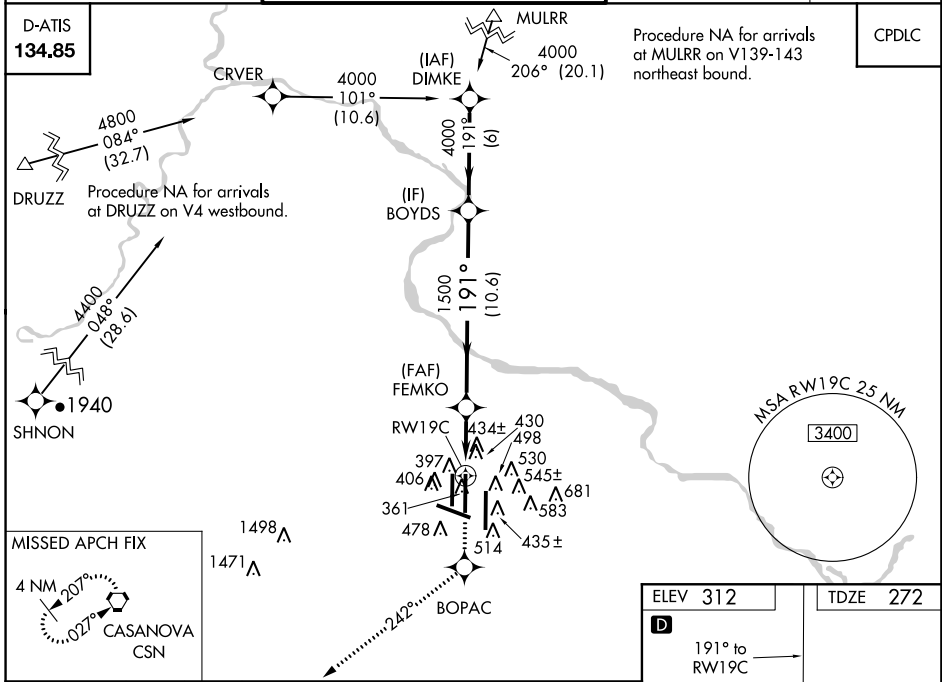
RNAV (GPS) Y RWY 19C

WASHINGTON DULLES INTL (IAD)

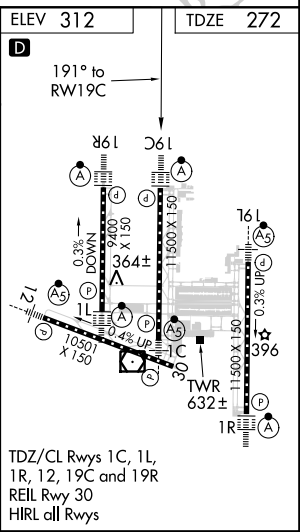
ALSF-2 MISSED APPROACH: Climb to 4000 direct BOPAC and on 242° track to CSN VORTAC and hold.

For inoperative ALSF-2, increase LNAV Cat D visibility to RVR 6000. For uncompensated Baro-VNAV systems, LNAV/VNAV NA below -1.5°C (5°F) or above 47°C (116°F). DME/DME RNP-0.3 NA. Simultaneous approach authorized with ILS or LOC Rwy 19L, ILS Rwy 19L (Cat III). LNAV procedure NA during simultaneous operations. Use of FD or AP providing RNAV track guidance required during simultaneous operations.

POTOMAC APP CON 120.45 306.925 (241°-330°) 128.525 306.925 (091°-240°) 126.1 338.25 (331°-090°)	DULLES TOWER 120.1 317.8 (Rwy 1R/19L) 120.25 348.6 (Rwy 1C/19C) 134.425 348.6 (Rwys 1L/19R and 12/30)	GND CON 121.9 317.8 (EAST) 121.625 348.6 (WEST)	CLNC DEL 135.7 317.8
---	---	---	--------------------------------



4000 BOPAC	CSN	VGSI and RNAV glidepath not coincident (VGSI Angle 3.00/TCH 72).	BOYDS	
*LNAV only.	1.1 NM to RWY 19C			
	FEMKO	191°	4000	
		1500	Procedure Turn NA	
			GP 3.00° TCH 54	
CATEGORY	A	B	C	D
LPV DA		472/18	200 (200-½)	
LNAV/VNAV DA		717/50	445 (500-1)	
LNAV MDA	700/24	428 (400-½)	700/40	700/50
			428 (400-¾)	428 (400-1)
CIRCLING	940-1	628 (700-1)	940-1¾	940-2
			628 (700-1¾)	628 (700-2)



NE-3, 31 JAN 2019 to 28 FEB 2019

NE-3, 31 JAN 2019 to 28 FEB 2019