

WAAS CH 56409 W01A	APP CRS 011°	Rwy ldg 11500 TDZE 312 Apt Elev 312
---------------------------------	------------------------	--

RNAV (GPS) Y RWY 1R

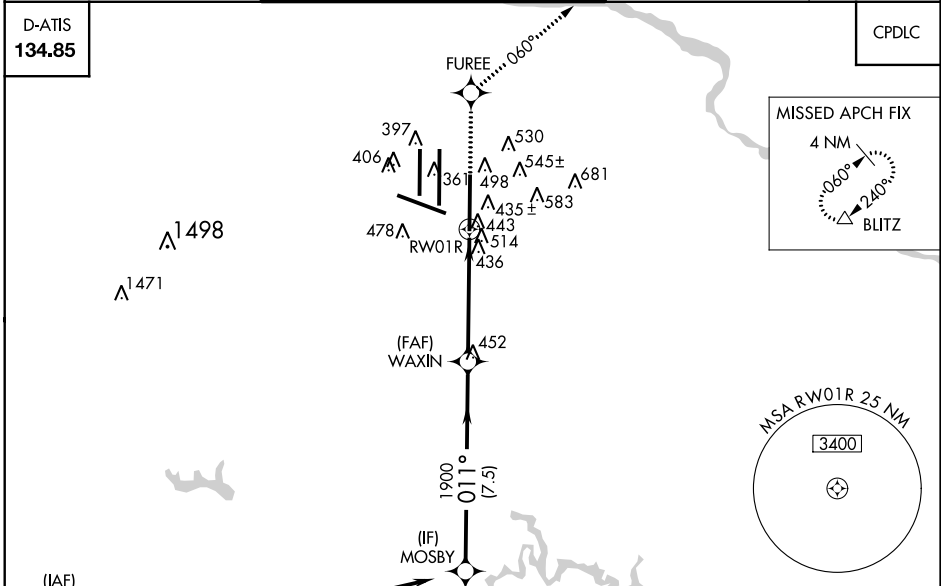
WASHINGTON DULLES INTL (IAD)

▼ For uncompensated Baro-VNAV systems, LNAV/VNAV NA below -15°C (5°F) or above 48°C (118°F). DME/DME RNP-0.3 NA. Simultaneous approach authorized with ILS or LOC/DME Rwy 1L, ILS Rwy 1L (Cat II), ILS Rwy 1L (Cat III). LNAV procedure NA during simultaneous operations. Use of FD or AP providing RNAV track guidance required during simultaneous operations.

ALSF-2

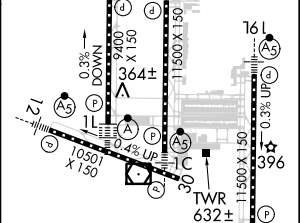
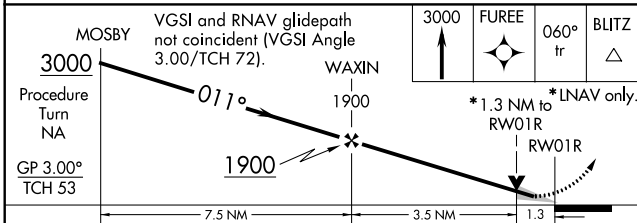
MISSED APPROACH:
Climb to 3000 direct FUREE and on 060° track to BLITZ and hold.

POTOMAC APP CON 120.45 306.925 (241°-330°) 128.525 306.925 (091°-240°) 126.1 338.25 (331°-090°)	DULLES TOWER 120.1 317.8 (Rwys 1R/19L) 120.25 348.6 (Rwy 1C/19C) 134.425 348.6 (Rwys 1L/19R and 12/30)	GND CON 121.9 317.8 (EAST) 121.625 348.6 (WEST)	CLNC DEL 135.7 317.8
---	--	---	--------------------------------



D-ATIS 134.85	CPDLC
-------------------------	-------

ELEV 312 TDZE 312



CATEGORY	A	B	C	D
LPV DA		512/18	200 (200-1/2)	
LNAV/VNAV DA		764/50	452 (500-1)	
LNAV MDA	800/24	488 (500-1/2)	800/40 488 (500-3/4)	800/50 488 (500-1)
CIRCLING	940-1	628 (700-1)	940-1 3/4 628 (700-1 3/4)	940-2 628 (700-2)

011° to RWY 1R

TDZ/CL Rwys 1C, 1L, 1R, 12, 19C and 19R
REIL Rwy 30
HIRL all Rwys

NE-3, 31 JAN 2019 to 28 FEB 2019

NE-3, 31 JAN 2019 to 28 FEB 2019