

(WIGOL.WIGOL1) 17117

AL-5100 (FAA)

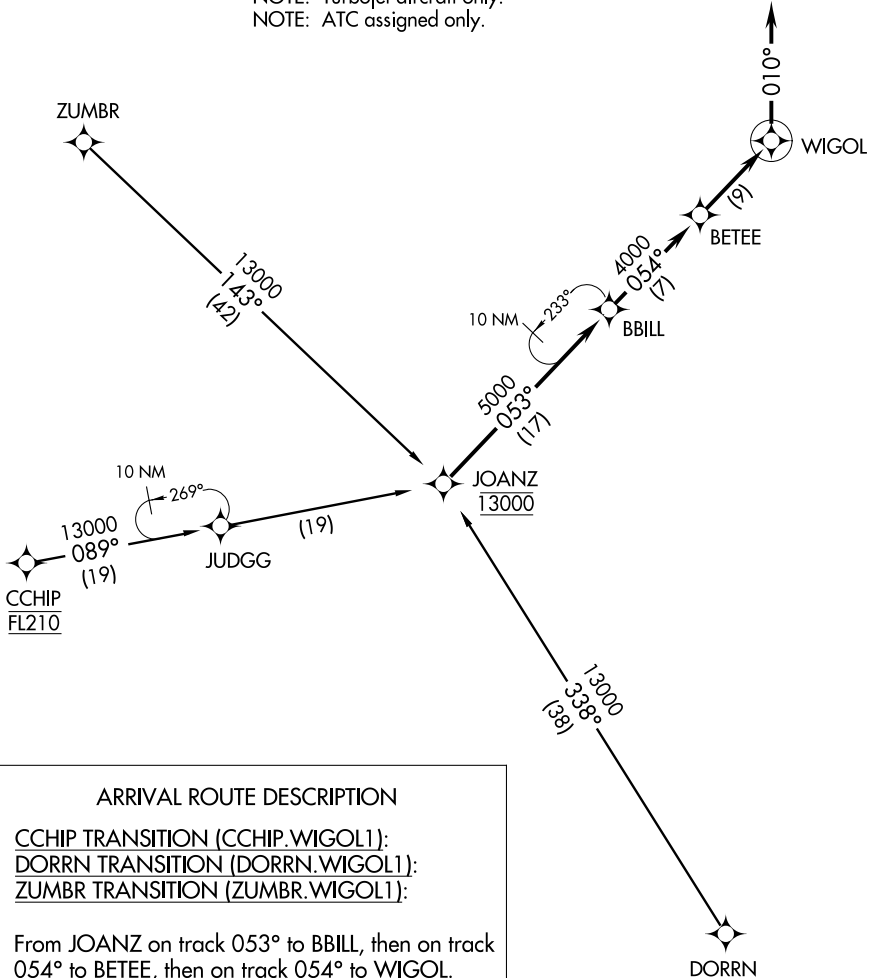
WASHINGTON DULLES INTL (IAD)
WASHINGTON, DC

WIGOL ONE ARRIVAL (RNAV)

POTOMAC APP CON
132.85 323.125
D-ATIS
134.85



NOTE: RADAR required.
NOTE: RNAV 1.
NOTE: DME/DME/IRU or GPS required.
NOTE: Turbojet aircraft only.
NOTE: ATC assigned only.



ARRIVAL ROUTE DESCRIPTION

CCHIP TRANSITION (CCHIP.WIGOL1):
DORRN TRANSITION (DORRN.WIGOL1):
ZUMBR TRANSITION (ZUMBR.WIGOL1):

From JOANZ on track 053° to BBILL, then on track 054° to BETEE, then on track 054° to WIGOL.

Landing Rwy's 19L, 19C, 19R, 30, 1L, 1C, 1R:
From WIGOL on heading 010°. Expect radar vectors to final approach course.

NOTE: Chart not to scale.

NE-3, 31 JAN 2019 to 28 FEB 2019

NE-3, 31 JAN 2019 to 28 FEB 2019

WIGOL ONE ARRIVAL (RNAV)
(WIGOL.WIGOL1) 03APR14

WASHINGTON, DC
WASHINGTON DULLES INTL (IAD)