

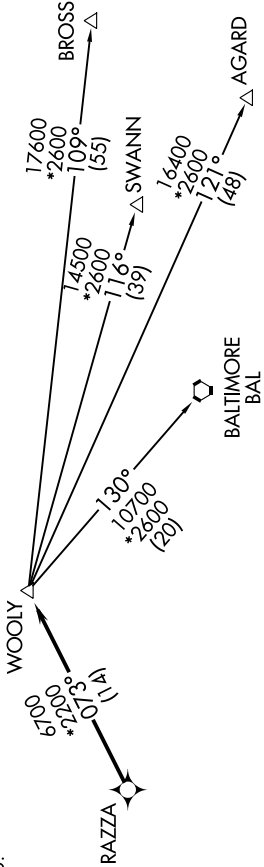
# WOOLY ONE DEPARTURE (RNAV)

NE-3, 31 JAN 2019 to 28 FEB 2019

D-ATIS 134.85  
 CLNC DEL 135.7 317.8  
 CPDLC  
 GND CON  
 121.9 317.8 (EAST)  
 121.625 348.6 (WEST)  
 DULLES TOWER  
 120.1 317.8 (Rwy 1R/19L)  
 120.25 348.6 (Rwy 1C/19C)  
 134.425 348.6 (Rwys 1L/19R, 12/30)  
 POTOMAC DEP CON  
 125.05 350.2

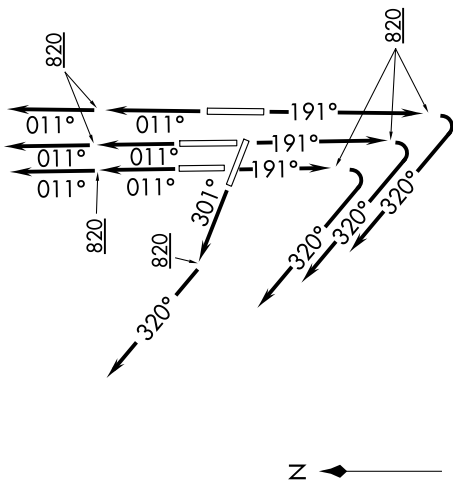
### TAKEOFF MINIMUMS:

Rwys 1L/C/R, 19L/C/R, 30:  
 Standard with minimum climb  
 of 500' per NM to 820.



**TOP ALTITUDE:**  
3000

NOTE: RNAV 1.  
 NOTE: DME/DME/IRU or GPS required.  
 NOTE: RADAR required.  
 NOTE: Turbojets only.



NOTE: Chart not to scale.

### DEPARTURE ROUTE DESCRIPTION

**TAKEOFF RUNWAYS 1L/C/R:** Climb heading 011° to 820, then on heading 011° or as assigned by ATC, expect RADAR vectors to RAZZA, thence . . . .

**TAKEOFF RUNWAYS 19L/C/R:** Climb heading 191° to 820, then on heading 320° or as assigned by ATC, expect RADAR vectors to RAZZA, thence . . . .

**TAKEOFF RUNWAY 30:** Climb heading 301° to 820, then on heading 320° or as assigned by ATC, expect RADAR vectors to RAZZA, thence . . . .

. . . . on track 073° to WOOLY, then on assigned transition. Maintain 3000. Expect clearance to filed altitude within ten (10) minutes after departure.

- AGARD TRANSITION [WOOLY1.AGARD]
- BALTIMORE TRANSITION [WOOLY1.BAL]
- BROSS TRANSITION [WOOLY1.BROSS]
- SWANN TRANSITION [WOOLY1.SWANN]

NE-3, 31 JAN 2019 to 28 FEB 2019