

LOC I-LMJ 110.7	APP CRS 218°	Rwy Idg 11001 TDZE 964 Apt Elev 964
---------------------------	------------------------	----------------------------------------------------------------

ILS or LOC RWY 22

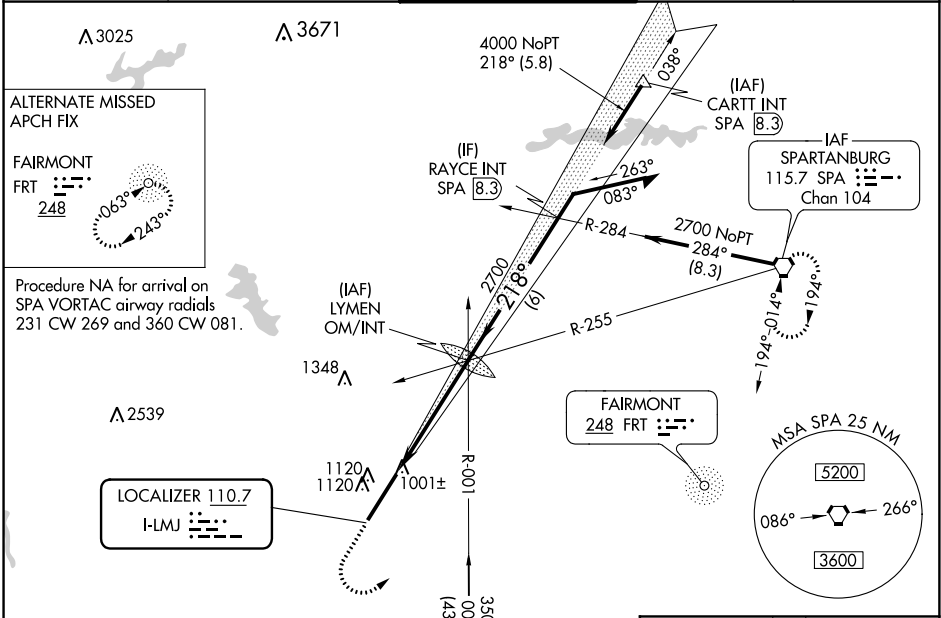
GREENVILLE SPARTANBURG INTL (GSP)

⚠ When local altimeter setting not received, use Greenville Downtown altimeter setting and increase all DA 29 feet and all MDA 40 feet; increase S-LOC 22 Cats C/D visibility to RVR 3500. For inop MALSR, increase S-LOC 22 Cats C/D visibility to RVR 5500. For inop MALSR, when using Greenville Downtown altimeter setting, increase S-LOC 22 Cats C and D visibility to RVR 5500.



MISSED APPROACH: Climb to 2000 then climbing left turn to 2700 direct SPA VORTAC and hold.

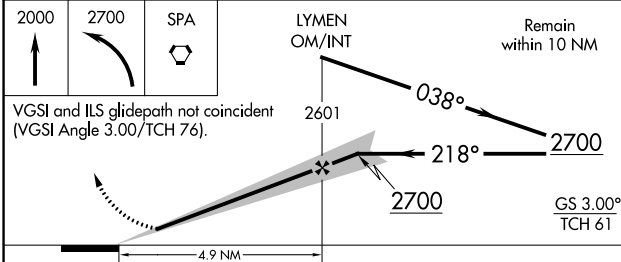
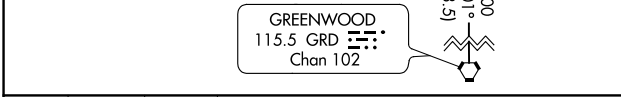
ATIS 134.25	GREER APP CON* 118.8 270.275	GREER TOWER* 120.1(CTAF) 251.15	GND CON 121.9	UNICOM 122.95
-----------------------	----------------------------------------	-------------------------------------------	-------------------------	-------------------------



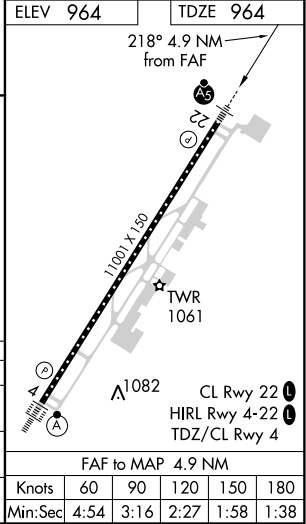
ALTERNATE MISSED APCH FIX

FAIRMONT FRT 248

Procedure NA for arrival on SPA VORTAC airway radials 231 CW 269 and 360 CW 081.



CATEGORY	A	B	C	D
S-ILS 22	1164/24		200 (200-½)	
S-LOC 22	1320/24	356 (400-½)	1320/30	356 (400-¾)
CIRCLING	1420-1	456 (500-1)	1420-1½ 456 (500-1½)	1520-2 556 (600-2)



SE-2, 31 JAN 2019 to 28 FEB 2019

SE-2, 31 JAN 2019 to 28 FEB 2019