

LOC/DME I-GSP 109.3 Chan 30	APP CRS 038°	Rwy Idg 11001 TDZE 947 Apt Elev 964
--	------------------------	--

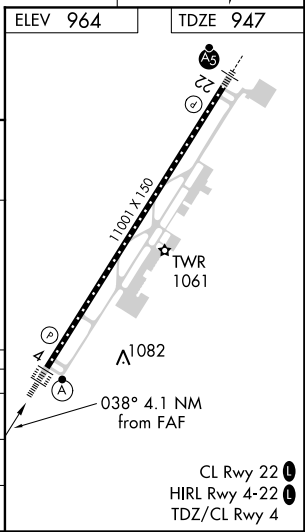
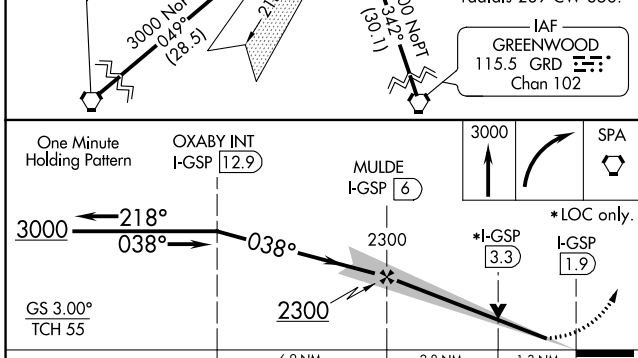
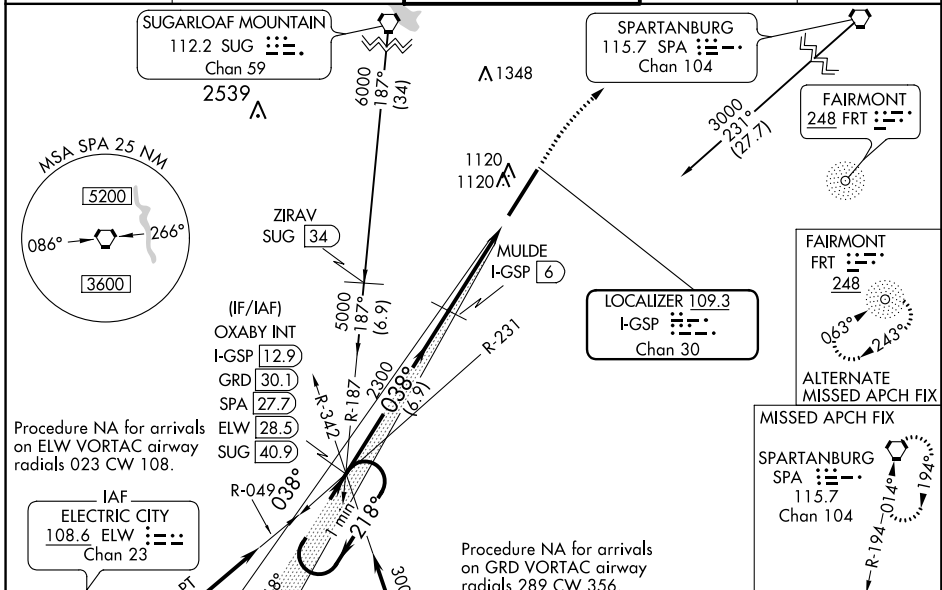
ILS or LOC RWY 4

GREENVILLE SPARTANBURG INTL (GSP)

⚠ VDP NA with Greenville Downtown altimeter setting. When local altimeter setting not received, use Greenville Downtown altimeter setting and increase DA 29 feet and all MDA 40 feet; increase S-LOC 4 Cats C and D visibility to RVR 5500. For inop ALSF-2, when using Greenville Downtown altimeter setting, increase S-LOC 4 Cats C and D visibility to 1 3/8 miles. When control tower closed, SA Cat I, Cat II/III NA. DME required.

ALSF-2 MISSED APPROACH: Climb to 3000 then right turn direct SPA VORTAC and hold.

ATIS 134.25	GREER APP CON* 118.8 270.275	GREER TOWER* 120.1(CTAF) 251.15	GND CON 121.9	UNICOM 122.95
-----------------------	--	---	-------------------------	-------------------------



CATEGORY	A	B	C	D
S-ILS 4	1147/18 200 (200-1/2)			
S-LOC 4	1420/24	473 (500-1/2)	1420/50	473 (500-1)
CIRCLING	1420-1	456 (500-1)	1420-1 1/2	1520-2
			456 (500-1 1/2)	556 (600-2)

SE-2, 31 JAN 2019 to 28 FEB 2019

SE-2, 31 JAN 2019 to 28 FEB 2019