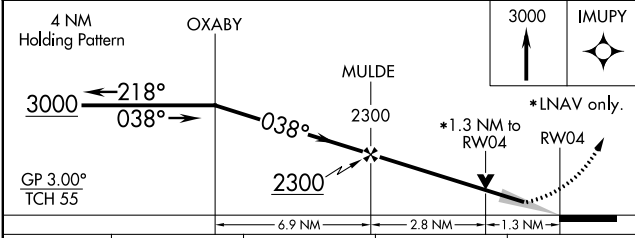
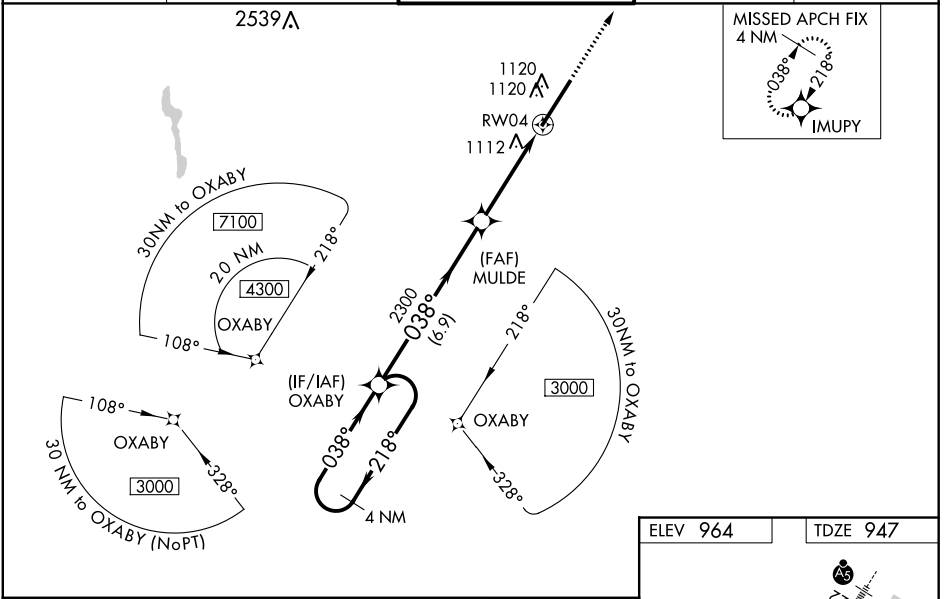


WAAS CH <b>78103</b> W04A	APP CRS <b>038°</b>	Rwy Idg <b>11001</b> TDZE <b>947</b> Apt Elev <b>964</b>
---------------------------------	------------------------	--

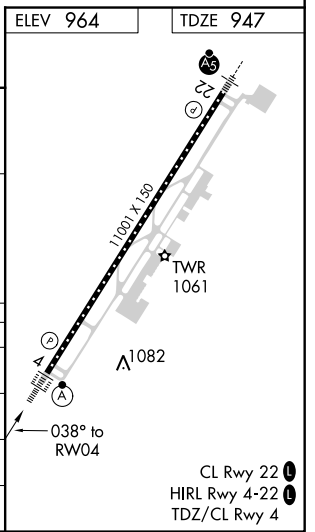
**RNAV (GPS) RWY 4**  
GREENVILLE SPARTANBURG INTL (GSP)

<p>Baro-VNAV NA when using Greenville Downtown altimeter setting. For uncompensated Baro-VNAV systems, LNAV/VNAV NA below -16°C (4°F) or above 38°C (100°F). DME/DME RNP-0.3 NA. VDP NA with Greenville Downtown altimeter setting. When local altimeter setting not received, use Greenville Downtown altimeter setting: increase all DA 29 feet and all MDA 40 feet; increase LNAV Cats C and D visibility to RVR 5000. For inop ALS, increase LNAV Cat C/D visibility to 1 3/8 SM.</p>	ALSF-2 	MISSED APPROACH: Climb to 3000 direct IMUPY and hold.

ATIS <b>134.25</b>	GREER APP CON ★ <b>118.8 270.275</b>	GREER TOWER ★ <b>120.1</b> (CTAF) <b>0 251.15</b>	GND CON <b>121.9</b>	UNICOM <b>122.95</b>
-----------------------	---	--	-------------------------	-------------------------



CATEGORY	A	B	C	D
LPV DA		1147/18	200 (200-1/2)	
LNAV/VNAV DA		1422/60	475 (500-1/4)	
LNAV MDA	1400/24	453 (500-1/2)	1400/45	453 (500-7/8)
CIRCLING	1420-1	456 (500-1)	1420-1 1/2 456 (500-1 1/2)	1520-2 556 (600-2)



SE-2, 31 JAN 2019 to 28 FEB 2019

SE-2, 31 JAN 2019 to 28 FEB 2019