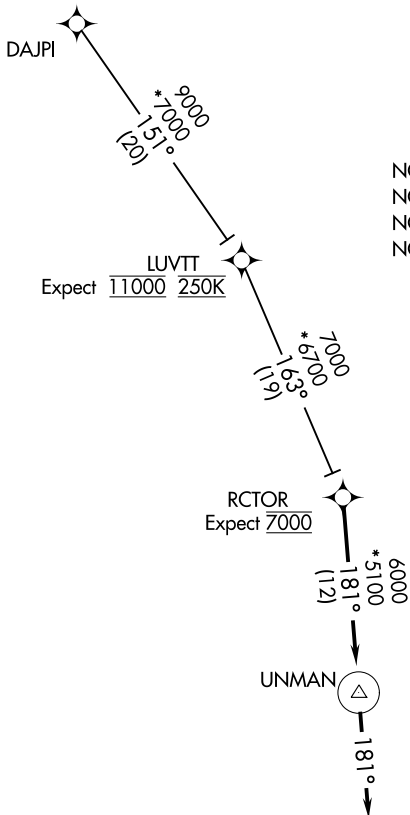


RCTOR ONE ARRIVAL (RNAV)

GREER, SOUTH CAROLINA

GREER APP CON
118.8 270.275 (WEST)
119.4 350.2 (EAST)
GREENVILLE-SPARTANBURG INTL ATIS
134.25



NOTE: RADAR required.
NOTE: RNAV 1.
NOTE: DME/DME/IRU or GPS required.
NOTE: Turbojet and Turboprop aircraft only.

LUVTT
Expect 11000 250K

RCTOR
Expect 7000

UNMAN

GREENVILLE DOWNTOWN
DONALDSON FIELD
GREENVILLE SPARTANBURG INTL
SPARTANBURG DOWNTOWN MEMORIAL

NOTE: Chart not to scale.

ARRIVAL ROUTE DESCRIPTION

DAJPI TRANSITION (DAJPI.RCTOR1)

From RCTOR on track 181° to UNMAN, then on heading 181°.
Expect RADAR vectors to final approach course.

SE-2, 31 JAN 2019 to 28 FEB 2019

SE-2, 31 JAN 2019 to 28 FEB 2019