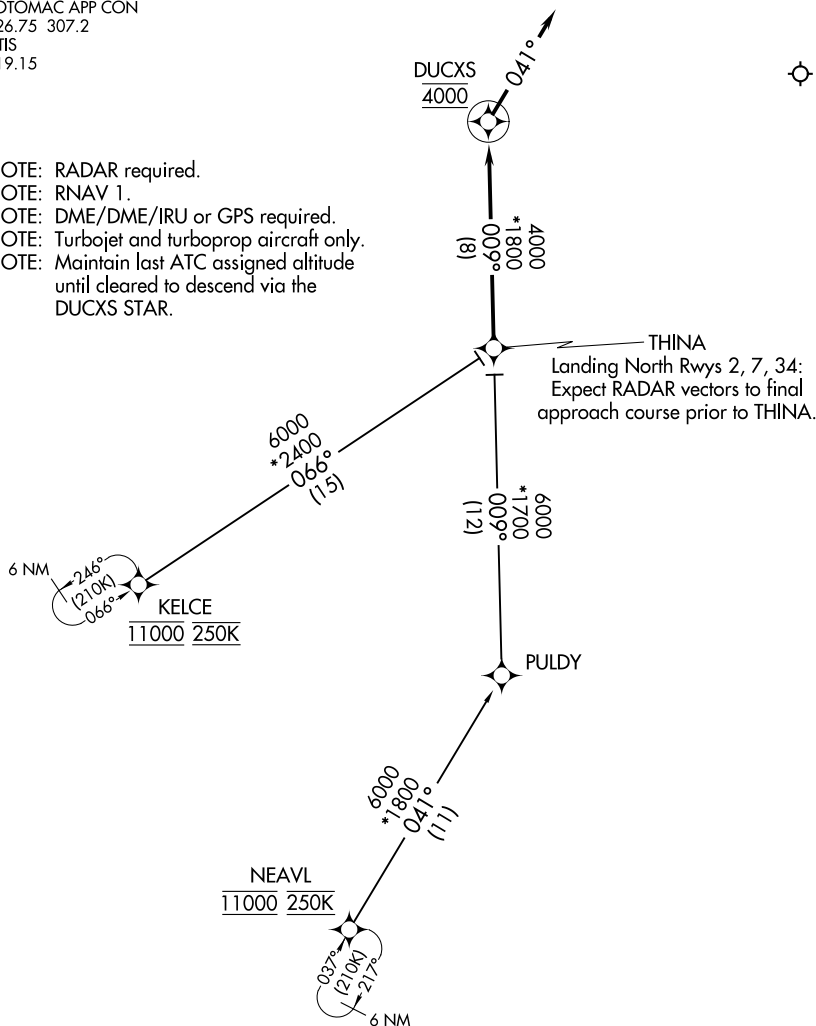


# DUCXS FOUR ARRIVAL (RNAV)

POTOMAC APP CON  
126.75 307.2  
ATIS  
119.15

- NOTE: RADAR required.
- NOTE: RNAV 1.
- NOTE: DME/DME/IRU or GPS required.
- NOTE: Turbojet and turboprop aircraft only.
- NOTE: Maintain last ATC assigned altitude until cleared to descend via the DUCXS STAR.



## ARRIVAL ROUTE DESCRIPTION

KELCE TRANSITION (KELCE.DUCXS4):  
NEAVL TRANSITION (NEAVL.DUCXS4):

From THINA on track 009° to cross DUCXS at 4000, then on heading 041° or as assigned by ATC. Expect RADAR vectors to final approach course.