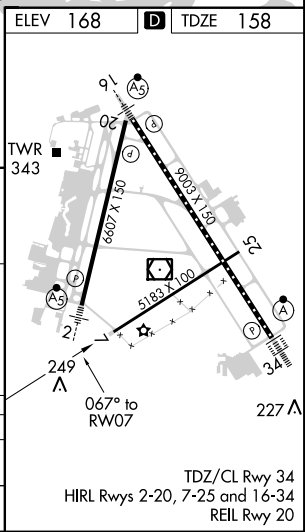
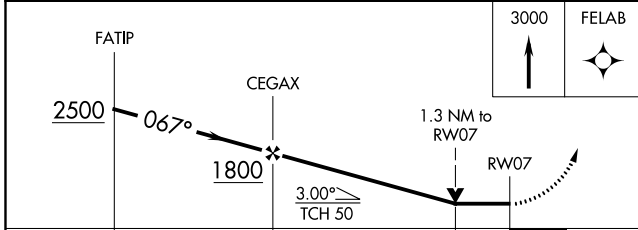
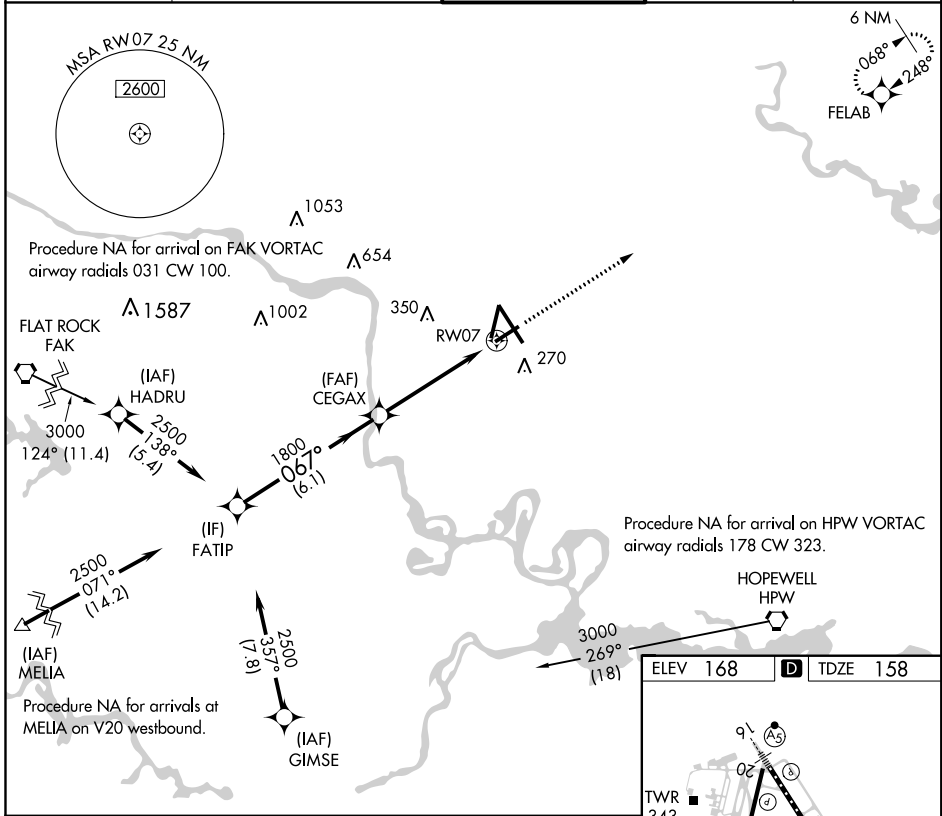


APP CRS	Rwy Idg	5183
067°	TDZE	158
	Apt Elev	168

RNAV (GPS) RWY 7

RICHMOND INTL (RIC)

RNP APCH		MISSED APPROACH: Climb to 3000 direct FELAB and hold.			
<p>▼ Rwy 7 helicopter visibility reduction below 3/4 SM NA.</p>					
ATIS	POTOMAC APP CON		RICHMOND TOWER		GND CON
119.15 263.025	126.4 282.375	(001°-185°)	121.1 257.8	121.9 348.6	CLNC DEL
	126.75 307.2	(186°-360°)			127.55 348.6



	6.1 NM		3.7 NM		1.3 NM	
CATEGORY	A	B	C	D		
LNVA MDA	620-1	462 (500-1)	620-1 3/8	462 (500-1 3/8)		
C CIRCLING	660-1	492 (500-1)	700-1 1/2	720-2		
			532 (600-1 1/2)	552 (600-2)		

NE-3, 28 FEB 2019 to 28 MAR 2019

NE-3, 28 FEB 2019 to 28 MAR 2019