

APP CRS	Rwy Idg	9003
157°	TDZE	167
	Apt Elev	168


RNAV (RNP) Y RWY 16

RICHMOND INTL (RIC)

RNP AR APCH

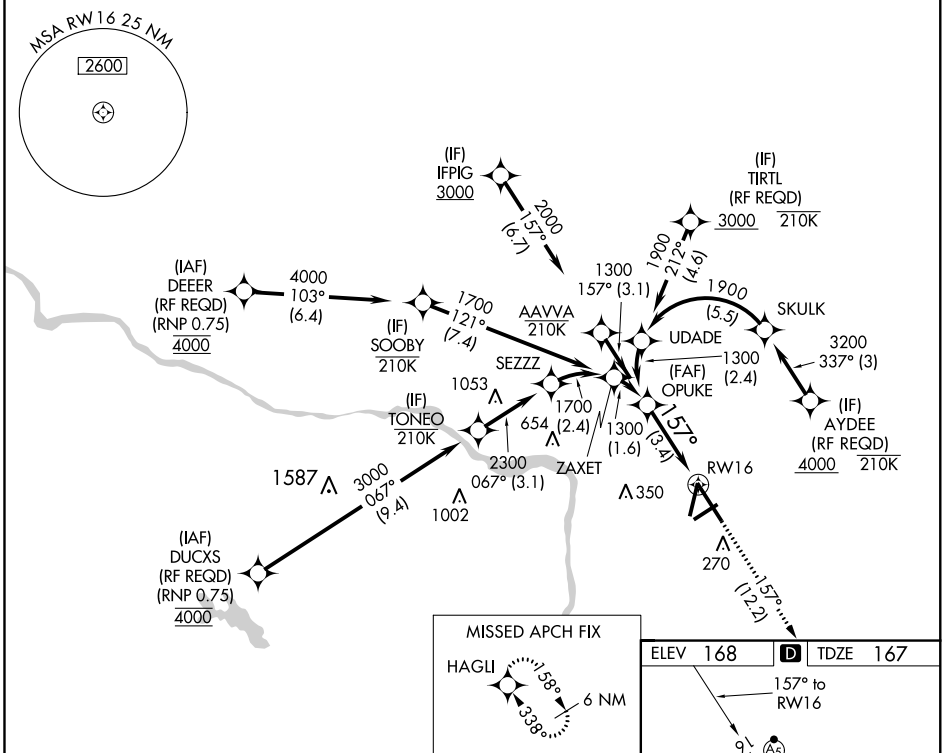
For uncompensated Baro-VNAV systems, procedure NA below -11°C (13°F) or above 54°C (130°F). For inop ALS, increase RNP 0.11 all Cats visibility to RVR 5500 and RNP 0.30 all Cats visibility to 1½ SM.

MALSR



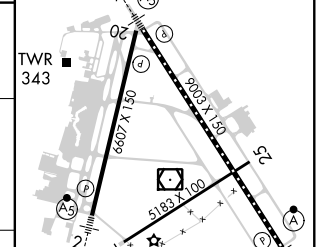
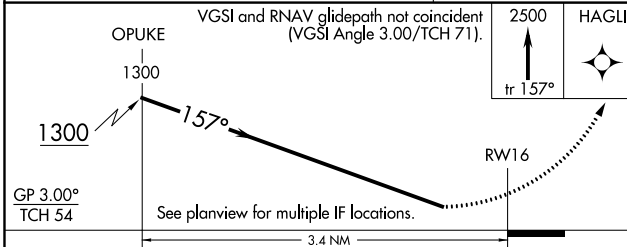
MISSED APPROACH:
Climb to 2500 on track
157° to HAGLI and hold.

POTOMAC APP CON		RICHMOND TOWER		GND CON		CLNC DEL	
ATIS	126.4 282.375	126.75 307.2	121.1 257.8	121.9 348.6	127.55 348.6		
	(001°-185°)	(186°-360°)					



NE-3, 28 FEB 2019 to 28 MAR 2019

NE-3, 28 FEB 2019 to 28 MAR 2019



CATEGORY	A	B	C	D
RNP 0.11 DA		506/40	339 (400-¾)	
RNP 0.30 DA		606/50	439 (500-1)	

TDZ/CL Rwy 34
HIRL Rwy 2-20, 7-25 and 16-34
REIL Rwy 20

AUTHORIZATION REQUIRED