

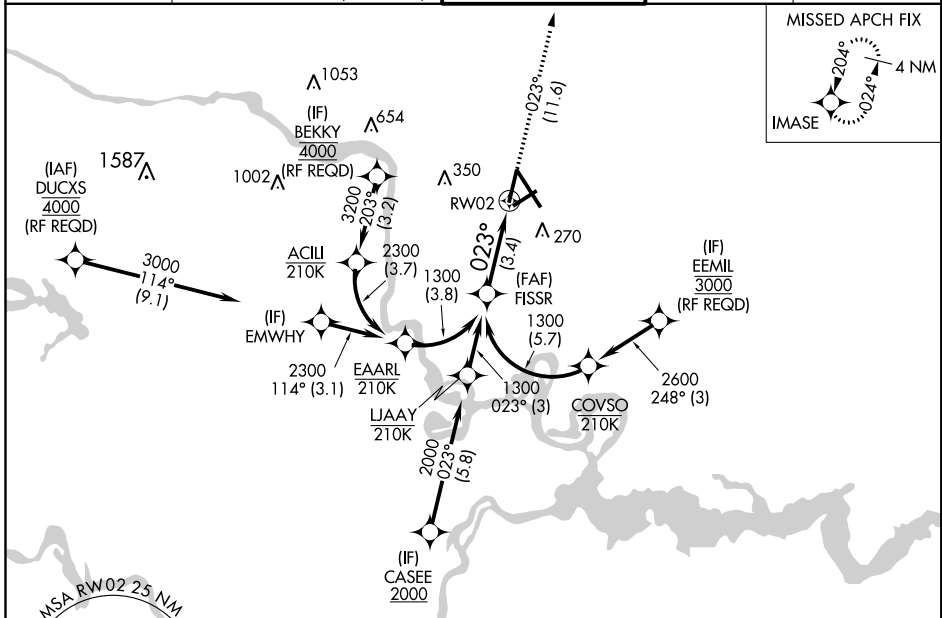
APP CRS	Rwy Idg	<b>6607</b>
<b>023°</b>	TDZE	<b>161</b>
	Apt Elev	<b>168</b>

# RNAV (RNP) Y RWY 2

RICHMOND INTL (RIC)

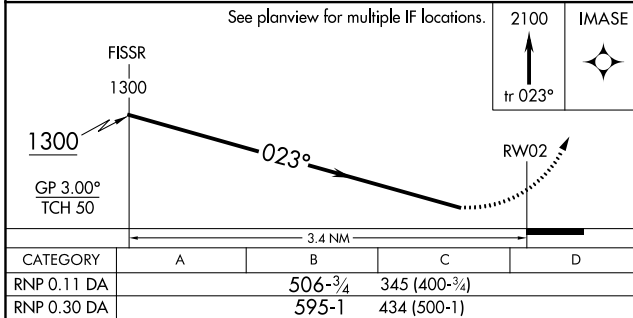
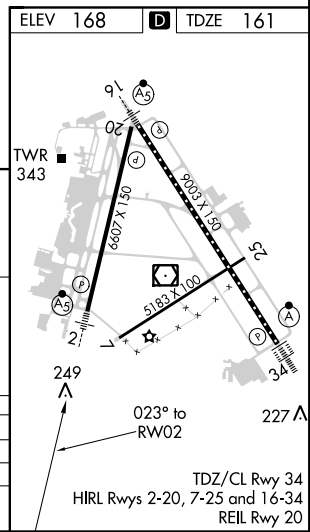
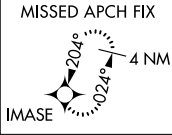
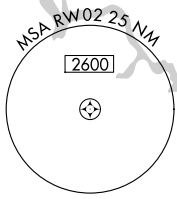
RNP AR APCH.	MALSR	MISSED APPROACH: Climb to 2100 on track 023° to IMASE and hold.
▼ For uncompensated Baro-VNAV systems, procedure NA below -11°C (13°F) or above 54°C (130°F). Rwy 2 helicopter visibility reduction below ¾ SM NA. For inop ALS, increase RNP 0.11 all Cats visibility to 1 SM and RNP 0.3 all Cats visibility to 1¼ SM.		

ATIS	POTOMAC APP CON	RICHMOND TOWER	GND CON	CLNC DEL
<b>119.15 263.025</b>	<b>126.4 282.375</b> (001°-185°) <b>126.75 307.2</b> (186°-360°)	<b>121.1 257.8</b>	<b>121.9 348.6</b>	<b>127.55 348.6</b>



NE-3, 28 FEB 2019 to 28 MAR 2019

NE-3, 28 FEB 2019 to 28 MAR 2019



## AUTHORIZATION REQUIRED

TDZ/CL Rwy 34  
HIRL Rwy 2-20, 7-25 and 16-34  
REIL Rwy 20