


APP CRS 337°	Rwy Idg 9003
	TDZE 161
	Apt Elev 168

RNAV (RNP) Y RWY 34

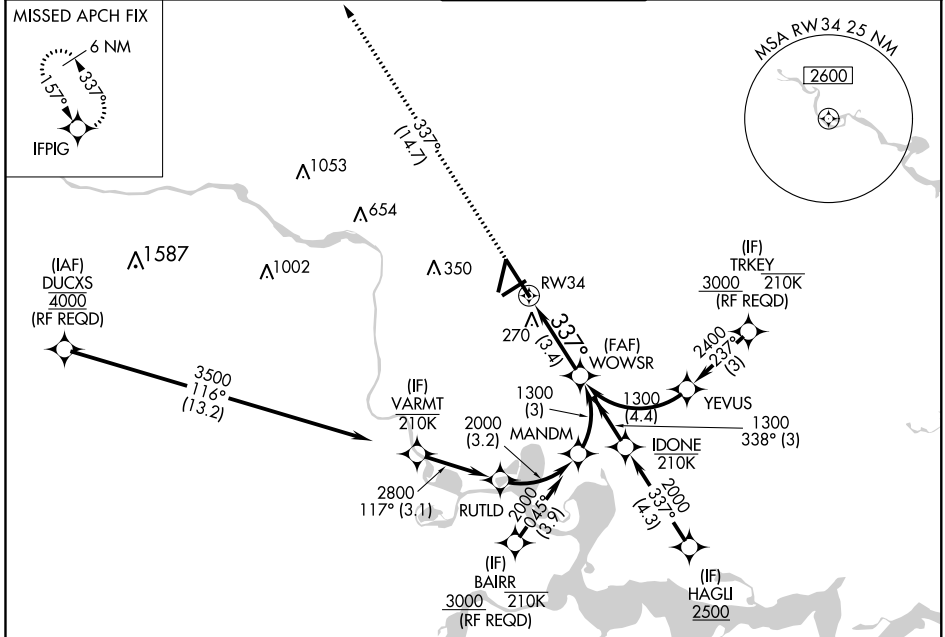
RICHMOND INTL (RIC)

⚠ For uncompensated Baro-VNAV systems, procedure NA below -11°C (13°F) or above 54°C (130°F). For inop ALS, increase RNP 0.11 all Cats visibility to RVR 4500 and RNP 0.30 all Cats visibility to 1¼ SM.

ALS-F-2 

MISSED APPROACH: Climb to 2500 on track 337° to IFPIG and hold.

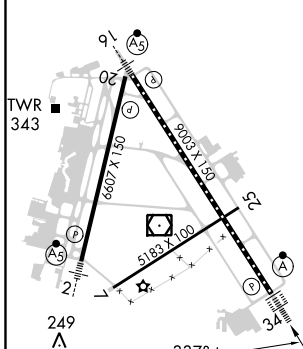
ATIS 119.15 263.025	POTOMAC APP CON 126.4 282.375 (001°-185°) 126.75 307.2 (186°-360°)	RICHMOND TOWER 121.1 257.8	GND CON 121.9 348.6	CLNC DEL 127.55 348.6
-------------------------------	--	--------------------------------------	-------------------------------	---------------------------------



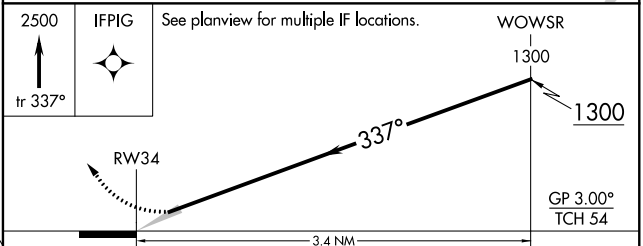
NE-3, 28 FEB 2019 to 28 MAR 2019

NE-3, 28 FEB 2019 to 28 MAR 2019

ELEV 168	D	TDZE 161
----------	----------	----------



TDZ/CL Rwy 34
HIRL Rwy 2-20, 7-25 and 16-34
REIL Rwy 20



CATEGORY	A	B	C	D
RNP 0.11 DA		478/26	317 (400-½)	
RNP 0.30 DA		592/49	431 (500-1)	

AUTHORIZATION REQUIRED