

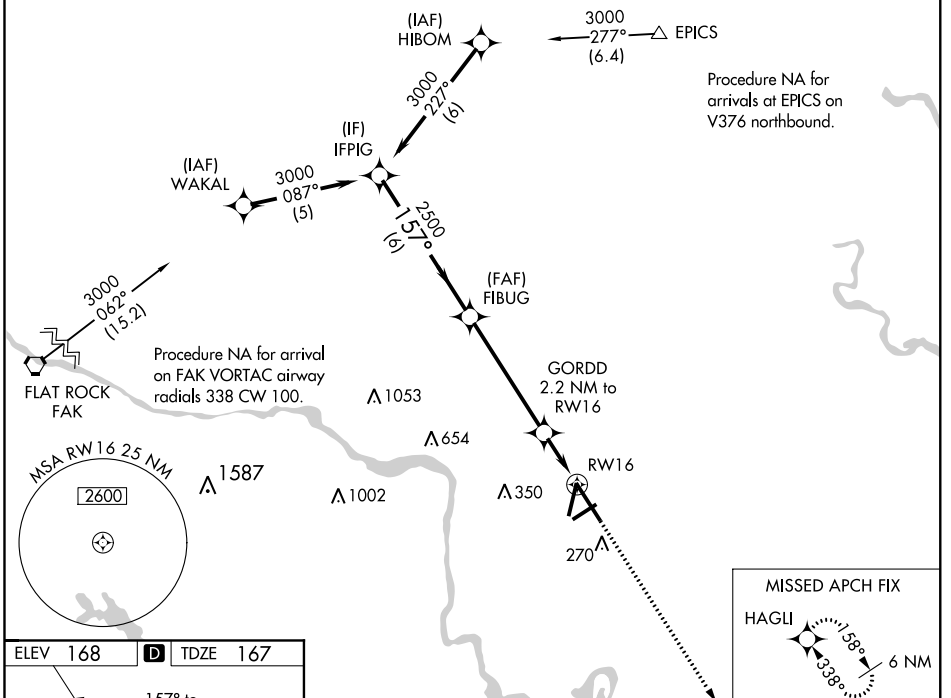
WAAS CH 72720 W16A	APP CRS 157°	Rwy Idg TDZE Apt Elev	9003 167 168
---------------------------------	------------------------	-----------------------------	---

RNAV (GPS) Z RWY 16

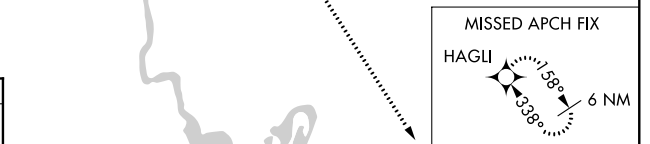
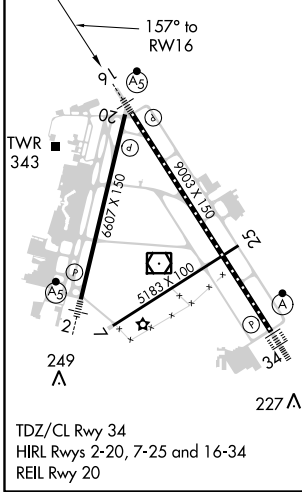
RICHMOND INTL (RIC)

RNP APCH: ▼ For uncompensated Baro-VNAV systems, LNAV/VNAV NA below -11°C (13°F) or above 54°C (130°F). For inop ALS increase LNAV/VNAV all Cats visibility to RVR 5400. ** RVR 1800 authorized with use of FD or AP or HUD to DA.	MALSR 	MISSED APPROACH: Climb to 2500 direct HAGLI and hold.
---	-----------	--

ATIS 119.15 263.025	POTOMAC APP CON 126.4 282.375 (001°-185°) 126.75 307.2 (186°-360°)	RICHMOND TOWER 121.1 257.8	GND CON 121.9 348.6	CLNC DEL 127.55 348.6
-------------------------------	--	--------------------------------------	-------------------------------	---------------------------------



ELEV 168	D TDZE 167
----------	-------------------



VGSi and RNAV glidepath not coincident (VGSi Angle 3.00/TCH 71). IFPIG 3000 157° FIBUG 2500 GORDD 2.2 NM to RW16 GP 3.00° TCH 54 920* *1.2 NM to RW16 RW16	2500	HAGLI		
	*LNAV only.			
CATEGORY LPV DA ** LNAV/VNAV DA LNAV MDA CIRCLING	A 367/24 504/31 600/24 660-1	B 200 (200-½) 337 (400-¾) 433 (500-½) 492 (500-1)	C 700 (200-½) 532 (600-1½)	D 720-2 552 (600-2)

NE-3, 28 FEB 2019 to 28 MAR 2019

NE-3, 28 FEB 2019 to 28 MAR 2019