

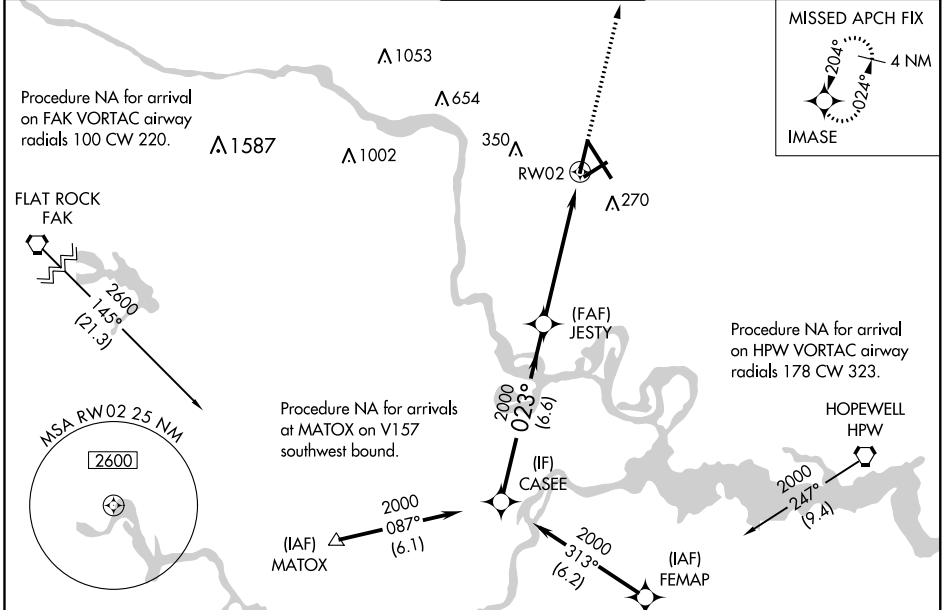
WAAS CH 72716 W02A	APP CRS 023°	Rwy Idg TDZE 161 Apt Elev 168	6607
--	------------------------	---	-------------

RNAV (GPS) Z RWY 2

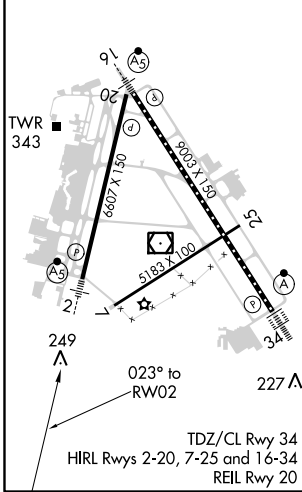
RICHMOND INTL (RIC)

RNP APCH.	MALSRS	MISSED APPROACH: Climb to 2000 direct IMASE and hold.
▼ For uncompensated Baro-VNAV systems, LNAV/VNAV NA below -11°C (13°F) or above 54°C (130°F). Rwy 2 helicopter visibility reduction below ¾ SM NA.		

ATIS 119.15 263.025	POTOMAC APP CON 126.4 282.375 (001°-185°) 126.75 307.2 (186°-360°)	RICHMOND TOWER 121.1 257.8	GND CON 121.9 348.6	CLNC DEL 127.55 348.6
-------------------------------	--	--------------------------------------	-------------------------------	---------------------------------



ELEV 168	D	TDZE 161
-----------------	----------	-----------------



	CASEE	JESTY	2000	IMASE
	2000	2000	2000	
	GP 3.00° TCH 50	023°	023°	
	6.6 NM	4.3 NM	1.3 NM	
CATEGORY	A	B	C	D
LPV DA		457-¾	296 (300-¾)	
LNAV/VNAV DA		568-7/8	407 (400-7/8)	
LNAV MDA	620-¾	459 (500-¾)	620-1	459 (500-1)
CIRCLING	660-1	492 (500-1)	700-1½ 532 (600-1½)	720-2 552 (600-2)

NE-3, 28 FEB 2019 to 28 MAR 2019

NE-3, 28 FEB 2019 to 28 MAR 2019