

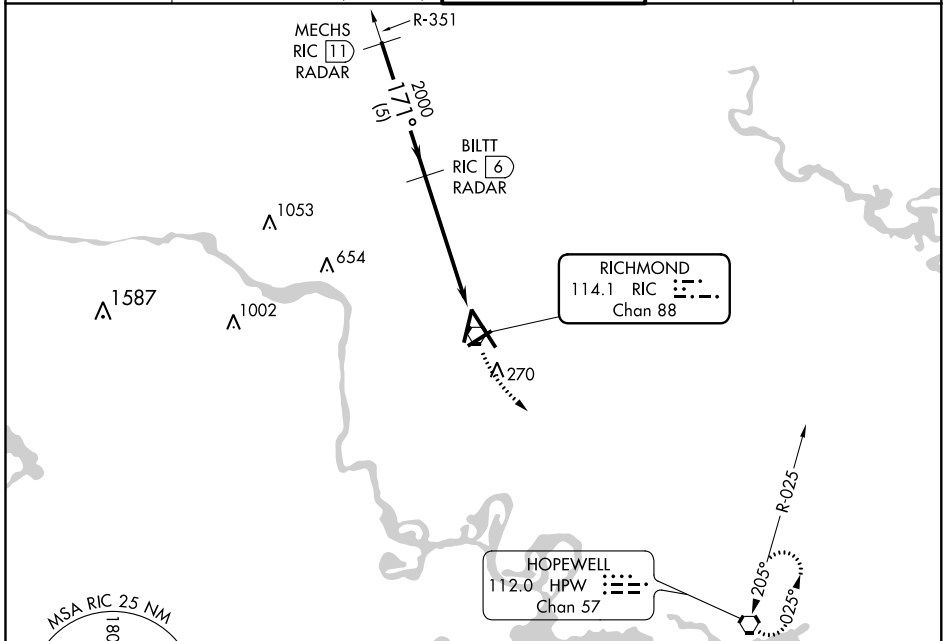
VORTAC RIC <b>114.1</b> Chan <b>88</b>	APP CRS <b>171°</b>	Rwy Idg TDZE <b>167</b> Apt Elev <b>167</b>	<b>9003</b>
--	------------------------	---	-------------

# VOR RWY 16

RICHMOND INTL (RIC)

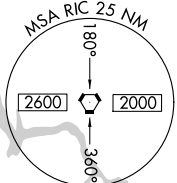
<p><b>▼</b> DME or RADAR REQUIRED. Visibility reduction by helicopters NA. For inoperative MALSR, increase S-16 Cat A/B visibility to RVR 5000.</p>	<p>MALSR</p>	<p>MISSED APPROACH: Climbing left turn to 2000 direct HPW VORTAC and hold.</p>
---	--------------	--

<p>ATIS <b>119.15 263.025</b></p>	<p>POTOMAC APP CON <b>126.4 282.375</b> (001°-185°) <b>126.75 307.2</b> (186°-360°)</p>	<p>RICHMOND TOWER <b>121.1 257.8</b></p>	<p>GND CON <b>121.9 348.6</b></p>	<p>CLNC DEL <b>127.55 348.6</b></p>
---------------------------------------	---	--	---------------------------------------	---

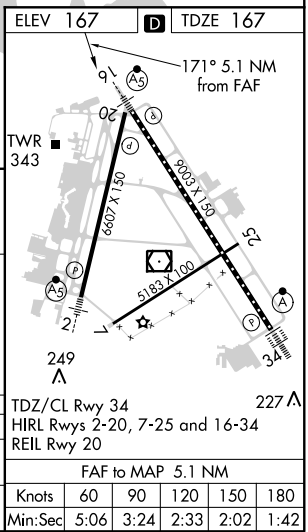
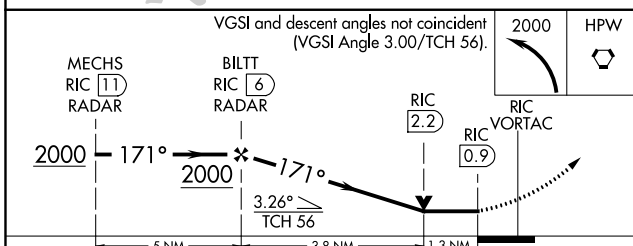


NE-3, 28 FEB 2019 to 28 MAR 2019

NE-3, 28 FEB 2019 to 28 MAR 2019



## RADAR REQUIRED



CATEGORY	A	B	C	D
S-16	640/40 473 (500-¾)			640/50 473 (500-1)
CIRCLING	660-1 493 (500-1)	660-1½ 493 (500-1½)		720-2 553 (600-2)

FAF to MAP 5.1 NM					
Knots	60	90	120	150	180
Min:Sec	5:06	3:24	2:33	2:02	1:42