

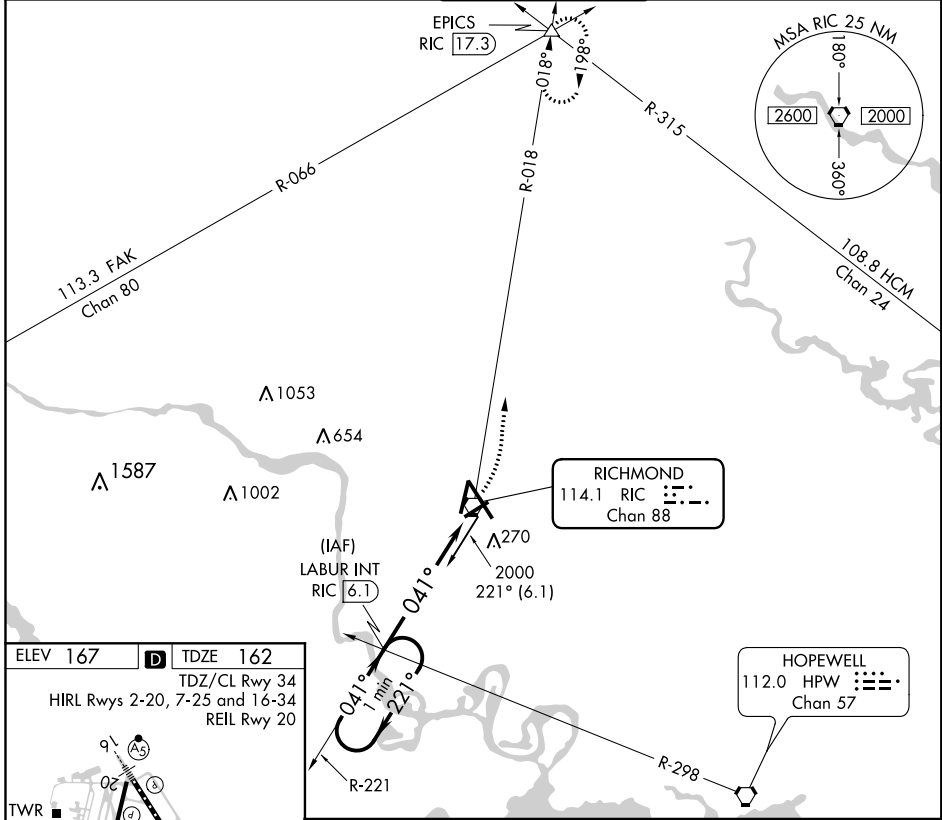
VORTAC RIC 114.1 Chan 88	APP CRS 041°	Rwy Idg TDZE 162 Apt Elev 167	6607
--	------------------------	---	-------------

VOR RWY 2

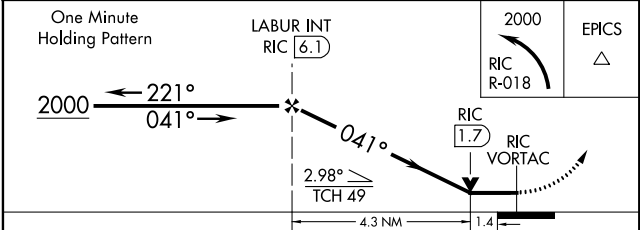
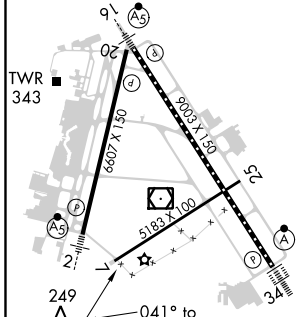
RICHMOND INTL (RIC)

<p>For inoperative MALSR, increase S-2 Cats A and B visibility to 1 mile, and Cats C and D visibility to 1 3/4 mile. Helicopter visibility reduction below 3/4 SM NA.</p>	<p>MALSR</p>	<p>MISSED APPROACH: Climbing left turn to 2000 on RIC VORTAC R-018 to EPICS INT/RIC 17.3 DME and hold.</p>
---	--------------	--

<p>ATIS 119.15 263.025</p>	<p>POTOMAC APP CON 126.4 282.375 (001°-185°) 126.75 307.2 (186°-360°)</p>	<p>RICHMOND TOWER 121.1 257.8</p>	<p>GND CON 121.9 348.6</p>	<p>CLNC DEL 127.55 348.6</p>
---------------------------------------	---	--	---------------------------------------	---



ELEV 167	D	TDZE 162
TDZ/CL Rwy 34		
HIRL Rws 2-20, 7-25 and 16-34		
REIL Rwy 20		



CATEGORY	A	B	C	D
S-2	640-3/4	478 (500-3/4)	640-1	478 (500-1)
CIRCLING	660-1	493 (500-1)	660-1 1/2 493 (500-1 1/2)	720-2 553 (600-2)

NE-3, 28 FEB 2019 to 28 MAR 2019

NE-3, 28 FEB 2019 to 28 MAR 2019