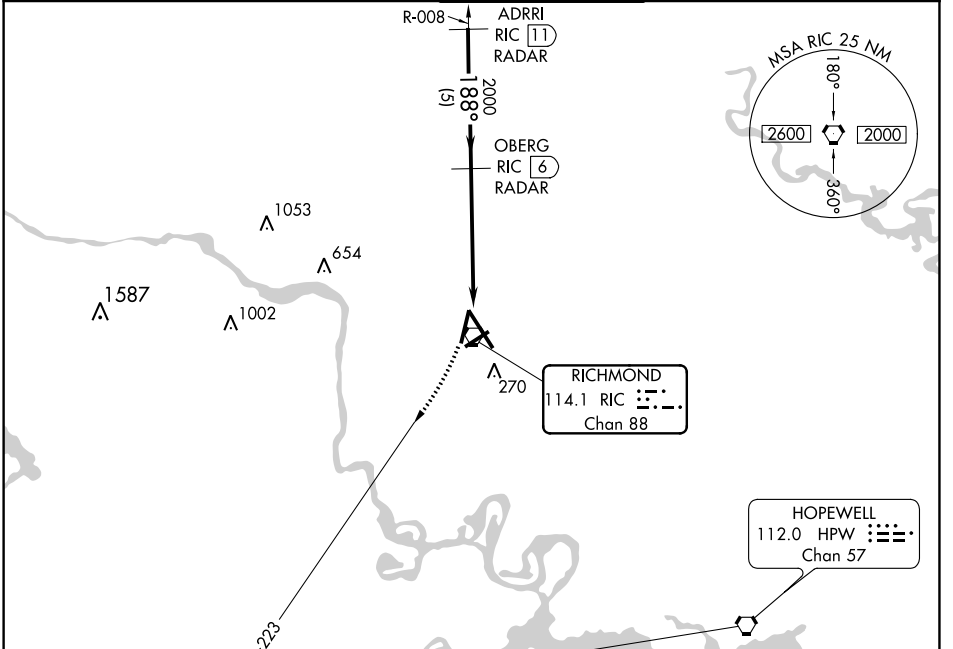


VORTAC RIC <b>114.1</b> Chan <b>88</b>	APP CRS <b>188°</b>	Rwy Idg <b>6607</b> TDZE <b>167</b> Apt Elev <b>167</b>
--	------------------------	---

# VOR RWY 20

RICHMOND INTL (RIC)

<p><b>▼ DME or RADAR REQUIRED.</b> Visibility reduction by helicopters NA.</p>		<p>MISSED APPROACH: Climbing right turn to 2000 via RIC R-223 to MATOX INT/ RIC 16.3 DME and hold.</p>		
<p>ATIS <b>119.15 263.025</b></p>	<p>POTOMAC APP CON <b>126.4 282.375</b> (001°-185°) <b>126.75 307.2</b> (186°-360°)</p>	<p>RICHMOND TOWER <b>121.1 257.8</b></p>	<p>GND CON <b>121.9 348.6</b></p>	<p>CLNC DEL <b>127.55 348.6</b></p>

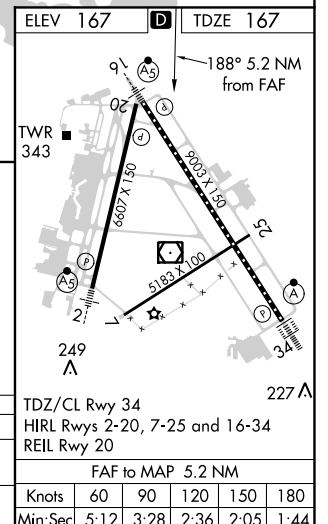


NE-3, 28 FEB 2019 to 28 MAR 2019

NE-3, 28 FEB 2019 to 28 MAR 2019



2000 RIC R-223	MATOX RIC △	VGSi and descent angles not coincident (VGSi Angle 3.00/TCH 49).	
RIC 0.9 VORTAC	RIC 2.1	OBERG RIC (6) RADAR	ADIRRI RIC (11) RADAR
188°		188°	
2000		2000	
1.2		4 NM	
		5 NM	



CATEGORY	A	B	C	D
S-20	640-1 473 (500-1)		640-1½ 473 (500-1½)	640-1½ 473 (500-1½)
CIRCLING	660-1 493 (500-1)		660-1½ 493 (500-1½)	720-2 553 (600-2)
<p>TDZ/CL Rwy 34 HIRL Rwy 2-20, 7-25 and 16-34 REIL Rwy 20 FAF to MAP 5.2 NM</p>				
Knots	60	90	120	150 180
Min:Sec	5:12	3:28	2:36	2:05 1:44