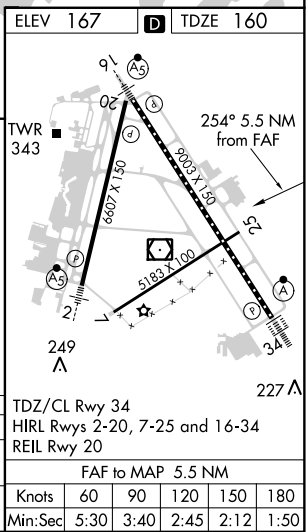
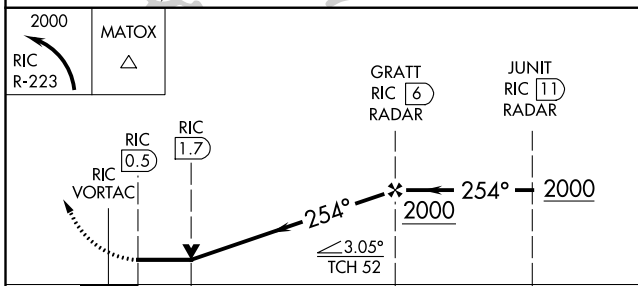
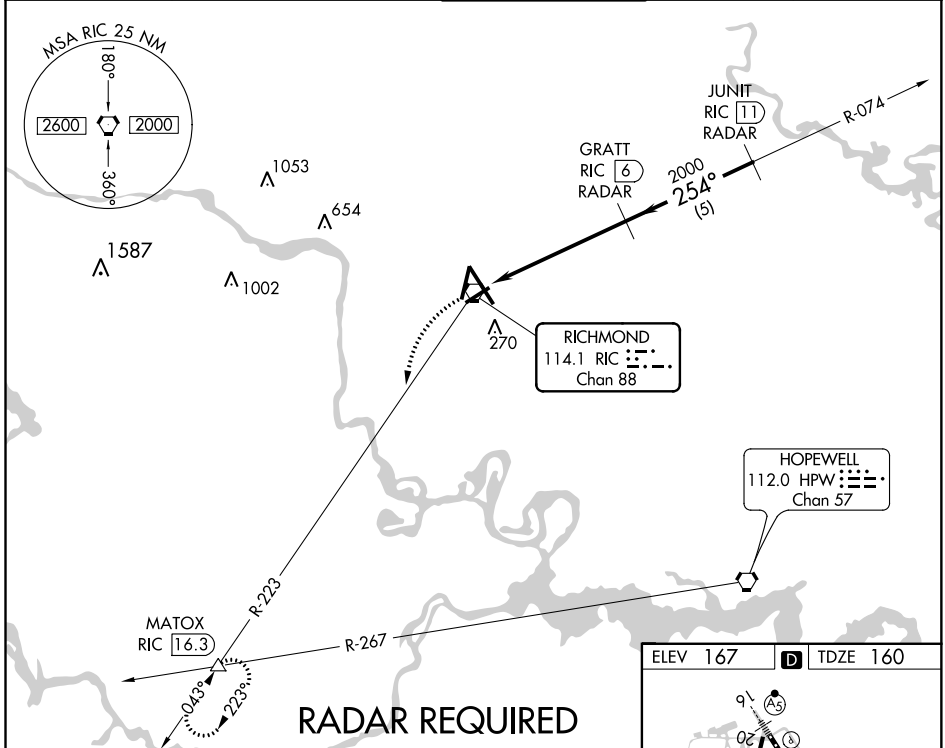


VORTAC RIC 114.1 Chan 88	APP CRS 254°	Rwy Idg TDZE Apt Elev	5183 160 167
----------------------------------------------	------------------------	-----------------------------	-----------------------------------------

VOR RWY 25

RICHMOND INTL (RIC)

<p>DME or RADAR REQUIRED. Visibility reduction by helicopters NA.</p>		<p>MISSED APPROACH: Climbing left turn to 2000 via RIC R-223 to MATOX INT and hold.</p>		
ATIS 119.15 263.025	POTOMAC APP CON 126.4 282.375 (001°-185°) 126.75 307.2 (186°-360°)	RICHMOND TOWER 121.1 257.8	GND CON 121.9 348.6	CLNC DEL 127.55 348.6



CATEGORY	A	B	C	D
S-25	600-1 440 (500-1)		600-1½ 440 (500-1½)	600-1½ 440 (500-1½)
CIRCLING	660-1 493 (500-1)		660-1½ 493 (500-1½)	720-2 553 (600-2)

NE-3, 28 FEB 2019 to 28 MAR 2019

NE-3, 28 FEB 2019 to 28 MAR 2019