

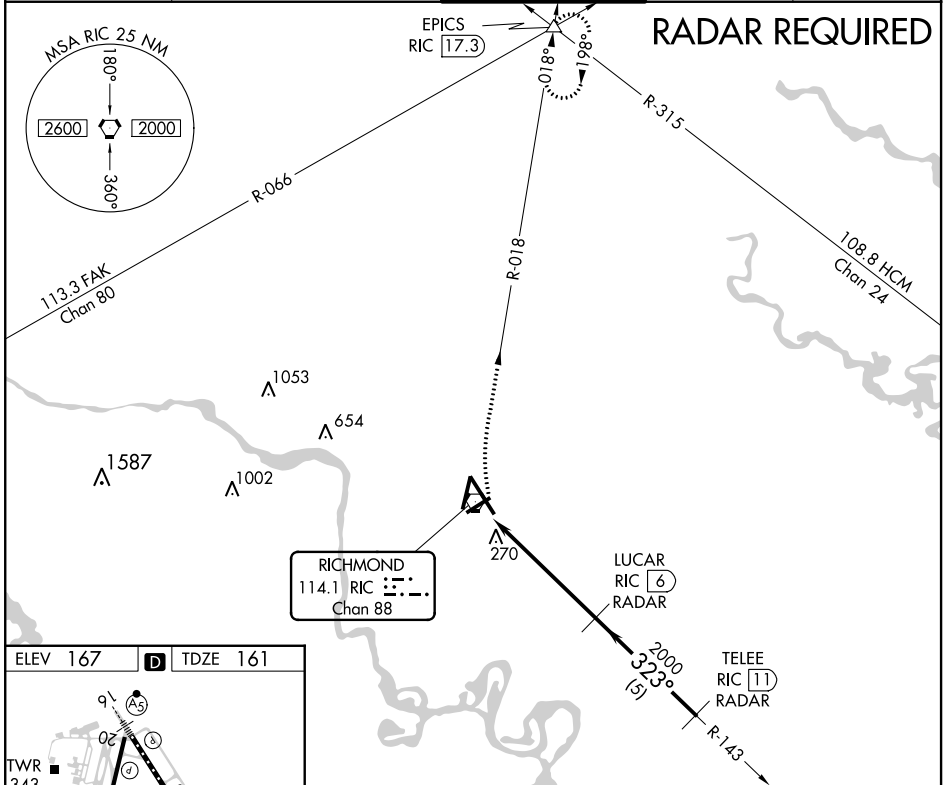
VORTAC RIC 114.1 Chan 88	APP CRS 323°	Rwy Idg TDZE 161 Apt Elev 167	9003
--	------------------------	---	-------------

VOR RWY 34

RICHMOND INTL (RIC)

	For inoperative ALSIF, increase S-34 Cat D visibility to RVR 6000. DME or Radar required.	MISSED APPROACH: Climbing right turn to 2000 via RIC R-018 to EPICS INT and hold.
	ALSF-2 	

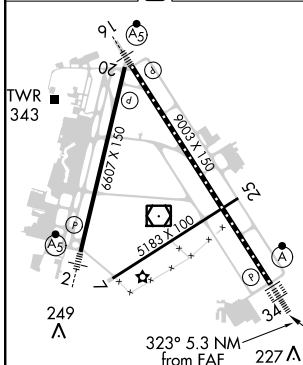
ATIS 119.15 263.025	POTOMAC APP CON 126.4 282.375 (001°-185°) 126.75 307.2 (186°-360°)	RICHMOND TOWER 121.1 257.8	GND CON 121.9 348.6	CLNC DEL 127.55 348.6
-------------------------------	--	--------------------------------------	-------------------------------	---------------------------------



NE-3, 28 FEB 2019 to 28 MAR 2019

NE-3, 28 FEB 2019 to 28 MAR 2019

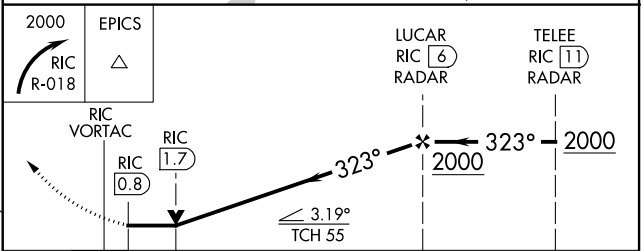
ELEV 167	D	TDZE 161
----------	----------	----------



TDZ/CL Rwy 34
HIRL Rws 2-20, 7-25 and 16-34
REIL Rwy 20

FAF to MAP 5.3 NM

Knots	60	90	120	150	180
Min:Sec	5:18	3:32	2:39	2:07	1:46



CATEGORY	A	B	C	D
S-34	540/24 379 (400-½)			540/50 379 (400-1)
CIRCLING	660-1	493 (500-1)	660-1½ 493 (500-1½)	720-2 553 (600-2)