

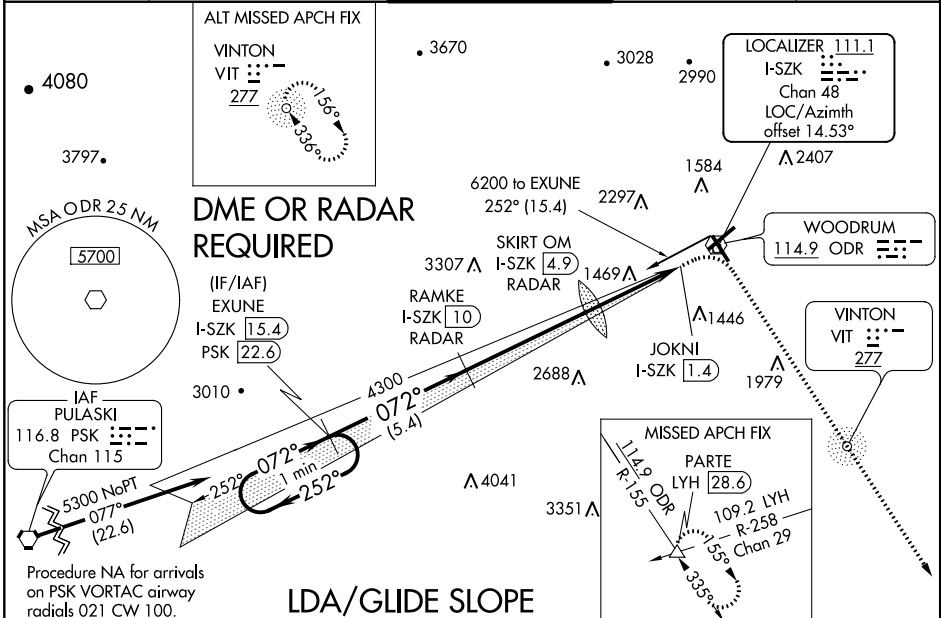
LOC/DME I-SZK 111.1 Chan 48	APP CRS 072°	Rwy Idg 6800 TDZE 1175 Apt Elev 1175
---	------------------------	---

LDA Y RWY 6

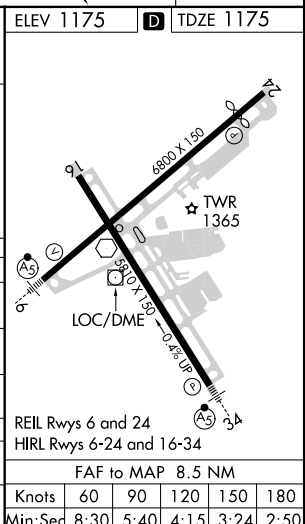
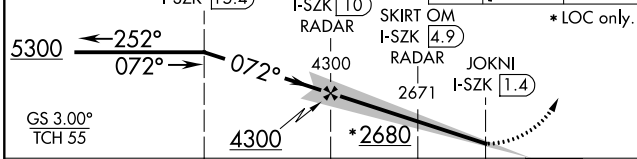
ROANOKE-BLACKSBURG RGNL/WOODRUM FIELD (R.O.A)

<p>▼ Inop table does not apply to S-LDA 6 Cats C and D. Circling NA NW of Rwy 6-24. For inop MALSR, increase S-LDA/GS 6 all Cats visibility to 1½.</p> <p>⚠ -13° C</p>	<p>MALSR</p>	<p>MISSED APPROACH: Climb to 1800 then climbing right turn to 5000 on ODR VOR R-155 to PARTE INT/LYH 28.6 DME and hold, continue climb-in-hold to 5000.</p>
--	--------------	---

<p>ATIS 132.375</p>	<p>ROANOKE APP CON 126.9 339.8</p>	<p>ROANOKE TOWER 118.3 257.8</p>	<p>GND CON 121.9 257.8</p>	<p>CLNC DEL 119.7</p>
--------------------------------	---	---	---------------------------------------	----------------------------------



One Minute Holding Pattern	VGSI and LDA glidepath not coincident (VGSI Angle 3.00/TCH 58). EXUNE I-SZK 15.4	1800	5000	PARTE	ELEV 1175	TDZE 1175
----------------------------	---	------	------	-------	-----------	-----------



CATEGORY	A	B	C	D
S-LDA/GS 6	1615-1½		440 (500-1½)	
S-LDA 6	2680-1	1505 (1600-1)	2680-3	1505 (1600-3)
C CIRCLING	2680-1½ 1505 (1600-1½)	2680-1½ 1505 (1600-1½)	2680-3 1505 (1600-3)	2800-3 1625 (1700-3)
SKIRT OM/DME/RADAR				
S-LDA 6	1720-1	545 (600-1)	1720-1½	545 (600-1½)
C CIRCLING	1720-1½	545 (600-1½)	2420-3 1245 (1300-3)	2800-3 1625 (1700-3)

NE-3, 28 FEB 2019 to 28 MAR 2019

NE-3, 28 FEB 2019 to 28 MAR 2019