

VOR ODR <b>114.9</b>	APP CRS <b>236°</b>	Rwy ldg TDZE Apt Elev <b>N/A</b> <b>N/A</b> <b>1175</b>
-------------------------	------------------------	--

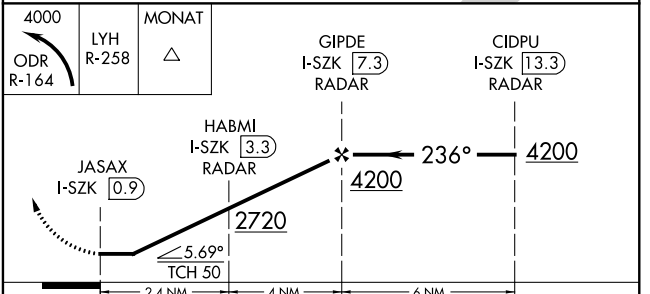
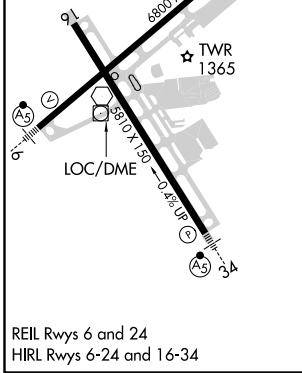
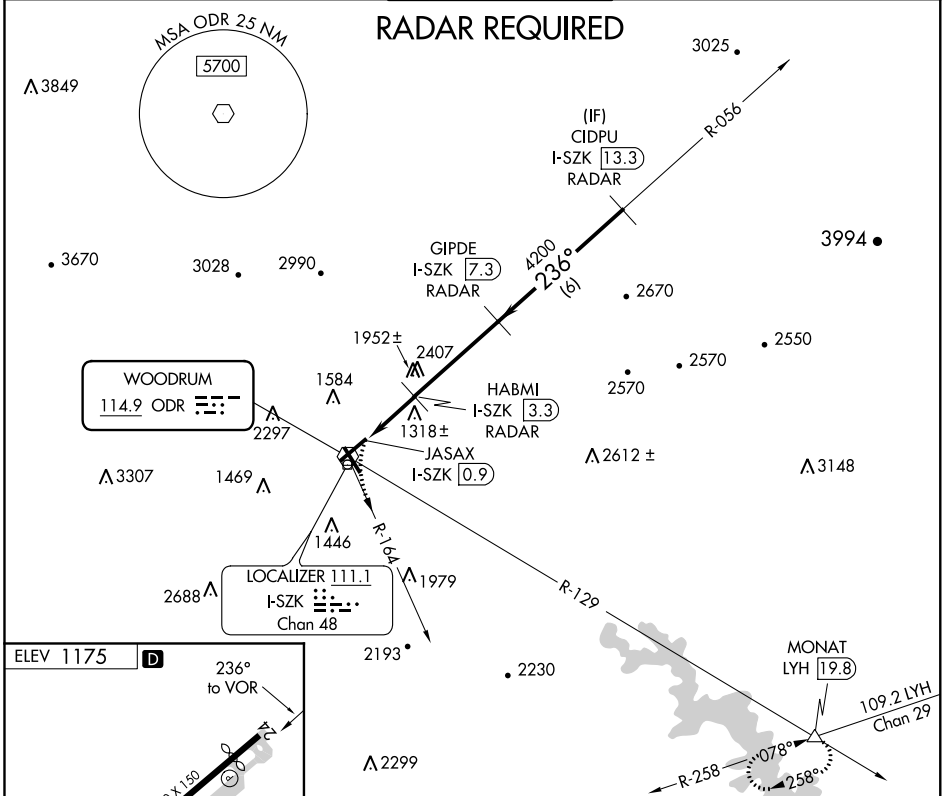
# VOR/DME-A

ROANOKE-BLACKSBURG RGNL/WOODRUM FIELD (R.O.A)

**⚠** Circling NA NW of Rwy 6-24. DME from I-SZK LDA.  
**⚠** Simultaneous reception of ODR VOR and I-SZK DME required.  
**⚠** -13°C

MISSED APPROACH: Climbing left turn to 4000 on ODR VOR R-164 and LYH VORTAC R-258 to MONAT/LYH 19.8 DME and hold.

ATIS <b>132.375</b>	ROANOKE APP CON <b>126.9 339.8</b>	ROANOKE TOWER <b>118.3 257.8</b>	GND CON <b>121.9 257.8</b>	CLNC DEL <b>119.7</b>
------------------------	---------------------------------------	-------------------------------------	-------------------------------	--------------------------



CATEGORY	A	B	C	D
<b>C</b> CIRCLING	1740-1	565 (600-1)	2420-3 1245 (1300-3)	2800-3 1625 (1700-3)

NE-3, 28 FEB 2019 to 28 MAR 2019

NE-3, 28 FEB 2019 to 28 MAR 2019