

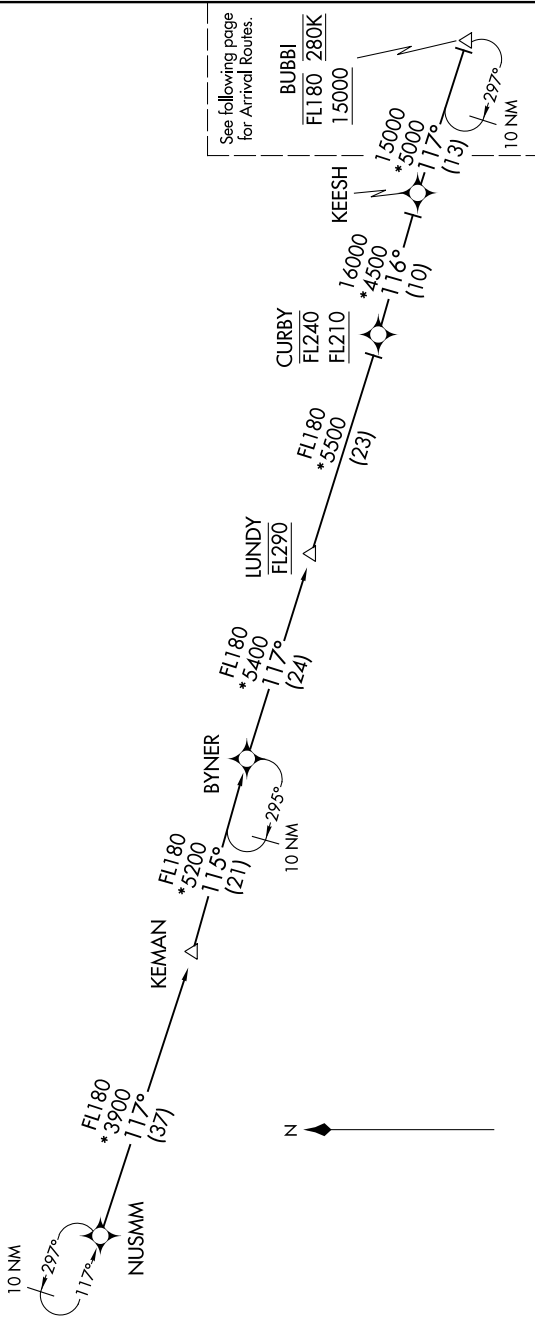
ANTHM THREE ARRIVAL (RNAV) Transition Routes

BALTIMORE, MARYLAND

NE-3, 28 FEB 2019 to 28 MAR 2019

BALTIMORE D-ATIS  
115.1  
POTOMAC APP CON  
133.85 254.25

- NOTE: RADAR required
- NOTE: RNAV 1.
- NOTE: DME/DME/IRU or GPS required.
- NOTE: Turbojet aircraft only.
- NOTE: Prohibited area (P56) 1.5 NM north of DCA avoid surface to 18000 MSL.
- NOTE: ARTCC will issue landing direction assignment (east or west). Potomac TRACON will issue runway assignments.



See following page for Arrival Routes.

BUBBI  
FL180 280K  
15000

KEESH  
FL180 \*5000  
117°  
(13)

10 NM  
297°

NOTE: Chart not to scale.

(CONTINUED ON FOLLOWING PAGES)

NE-3, 28 FEB 2019 to 28 MAR 2019

KEESH TRANSITION (KEESH.ANTHM3)  
 KEMAN TRANSITION (KEMAN.ANTHM3)  
 NUSMM TRANSITION (NUSMM.ANTHM3)

ANTHM THREE ARRIVAL (RNAV) Transition Routes

BALTIMORE, MARYLAND