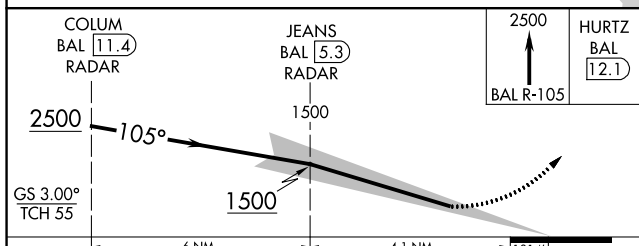
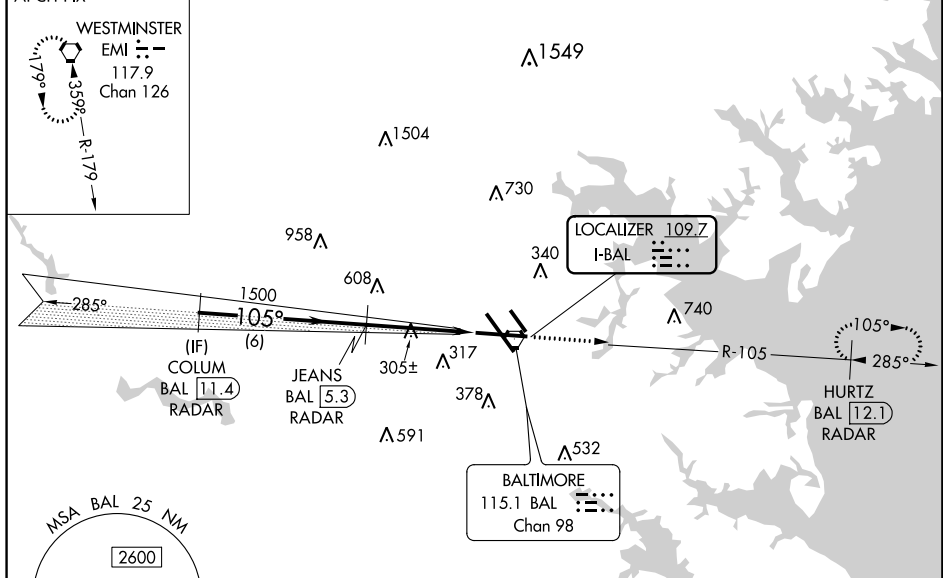


LOC I-BAL 109.7	APP CRS 105°	Rwy Idg 9952 TDZE 143 Apt Elev 143
---------------------------	------------------------	---------------------------------------------------------------

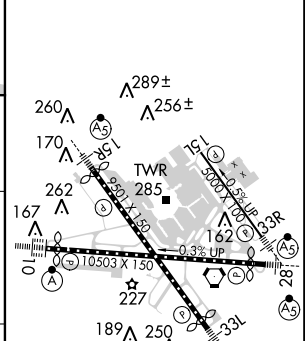
BALTIMORE/ WASHINGTON INTL THURGOOD MARSHALL (BWI) **ILS RWY 10 (CAT II & III)**

RADAR required for procedure entry. DME required.		ALSIF-2 	MISSED APPROACH: Climb to 2500 on BAL VORTAC R-105 to HURTZ/BAL 12.1 DME/RADAR and hold.
D-ATIS 115.1 127.8	POTOMAC APP CON 119.0 282.275 (020°-100°) 119.7 290.475 (131°-180°) 124.55 317.425 (101°-130°) 128.7 307.9 (181°-019°)	BALTIMORE TOWER 119.4 257.8	GND CON 121.9
			CLNC DEL 118.05

ALTERNATE MISSED APCH FIX CPDLC



ELEV 143	D	TDZE 143
----------	----------	----------



COLUM BAL 11.4 RADAR	JEANS BAL 5.3 RADAR	HURTZ BAL 12.1 RADAR
2500	1500	1014'
6 NM	4.1 NM	

CATEGORY	A	B	C	D
S-ILS 10	CAT II RA 102/12 100 DA 243			
S-ILS 10	CAT III RVR 06			

CATEGORY II & III ILS - SPECIAL AIRCREW & AIRCRAFT CERTIFICATION REQUIRED

TDZ/CL Rwy 10 and 33L
REIL Rwy 15L and 33R
HIRL all rwy's

NE-3, 28 FEB 2019 to 28 MAR 2019

NE-3, 28 FEB 2019 to 28 MAR 2019