

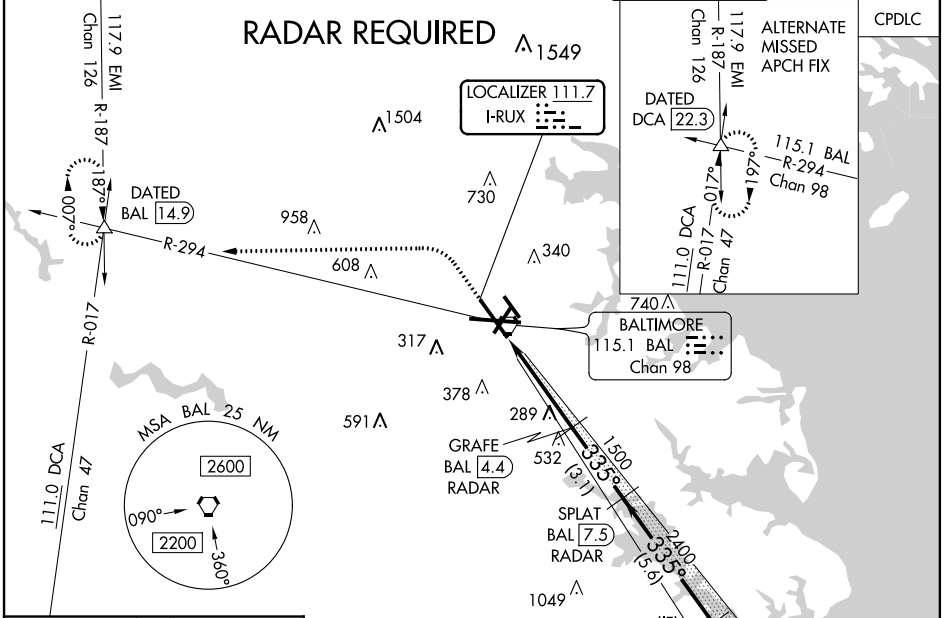
LOC I-RUX 111.7	APP CRS 335°	Rwy ldg TDZE Apt Elev	8300 143 146
---------------------------	------------------------	-----------------------------	---

ILS RWY 33L (SA CAT I & II)
BALTIMORE/WASHINGTON INTL THURGOOD MARSHALL (BWI)

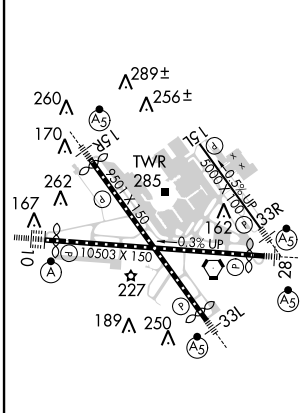
⚠ DME or Radar required. Simultaneous approach authorized with ILS or LOC Rwy 33R. DME from BAL VORTAC. SA CAT I: Requires specific OPSPEC, MSPEC, or LOA approval and use of HUD to DH. SA CAT II: Reduced lighting: Requires specific OPSPEC, MSPEC, or LOA approval and use of autoland or HUD to touchdown.

MALSR
AS
MISSED APPROACH: Climb to 600 then climbing left turn to 2600 on heading 280° and BAL R-294 to DATED INT/BAL 14.9 DME and hold.

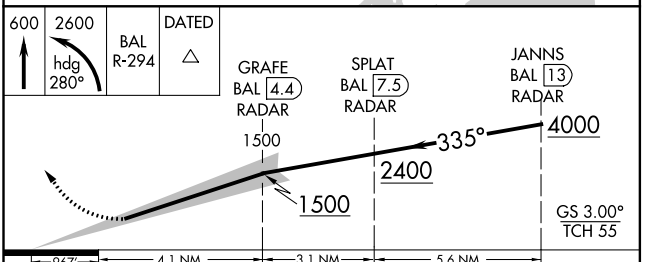
D-ATIS 115.1 127.8	POTOMAC APP CON (020°-100°) 119.7 290.475 (131°-180°) (101°-130°) 124.55 317.425 (181°-019°)	BALTIMORE TOWER 119.4 257.8	GND CON 121.9	CLNC DEL 118.05
------------------------------	--	---------------------------------------	-------------------------	---------------------------



ELEV 146	D	TDZE 143
-----------------	----------	-----------------



TDZ/CL Rwsys 10 and 33L
REIL Rwsys 15L and 33R
HIRL all rwsys



CATEGORY	A	B	C
S-ILS 33L	SA CAT I RA 186/14	150	DA 293
S-ILS 33L	SA CAT II RA 132/12	100	DA 243

SA CATEGORY I & II ILS - SPECIAL AIRCREW & AIRCRAFT CERTIFICATION REQUIRED

NE-3, 28 FEB 2019 to 28 MAR 2019

NE-3, 28 FEB 2019 to 28 MAR 2019