

LOC I-OEH	APP CRS	Rwy Idg	9802
109.7	285°	TDZE	143
		Apt Elev	143

BALTIMORE/
WASHINGTON INTL THURGOOD MARSHALL (BWI)

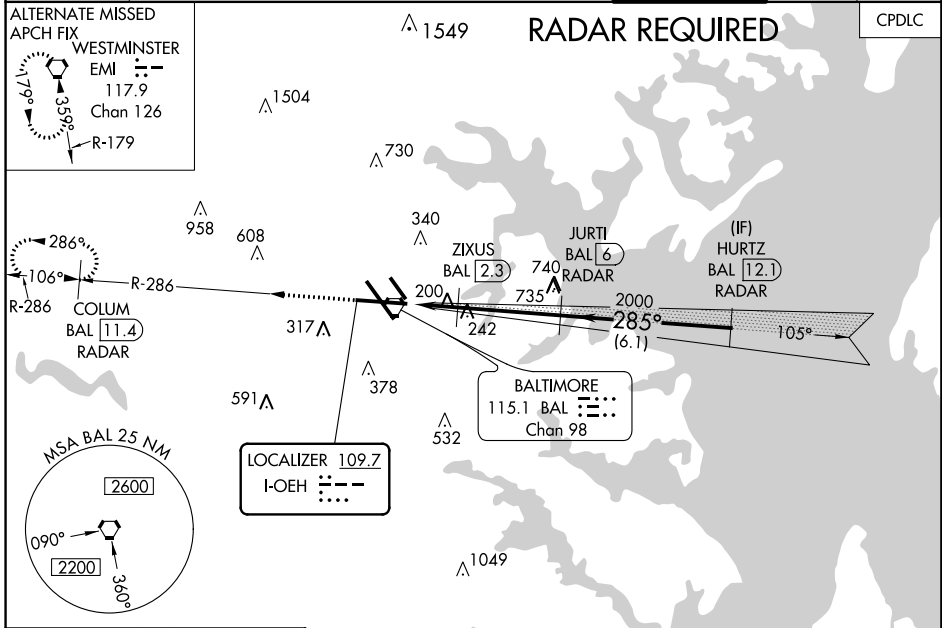
ILS or LOC RWY 28

▼ DME or radar required. For inoperative MALS, increase S-LOC 28
▲ Cat C/D visibility to 1½ mile, and increase ZIXUS fix S-LOC 28
 Cat C/D visibility to RVR 4500.
 **RVR 1800 authorized with the use of FD or AP or HUD to DA.



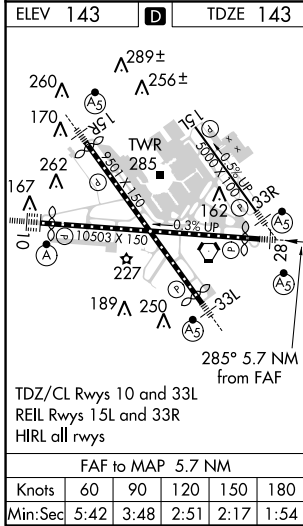
MISSED APPROACH: Climb to 2500 on
 BAL VORTAC R-286 to COLUM/BAL
 11.4 DME/RADAR and hold.

D-ATIS	POTOMAC APP CON	BALTIMORE TOWER	GND CON	CLNC DEL
115.1 127.8	119.0 282.275 (020°-100°) 119.7 290.475 (101°-130°) 128.7 307.9 (131°-180°) (181°-019°)	119.4 257.8	121.9	118.05



NE-3, 28 FEB 2019 to 28 MAR 2019

NE-3, 28 FEB 2019 to 28 MAR 2019



	COLUM BAL 11.4 RADAR	ZIXUS BAL 2.3	JURTI BAL 6 RADAR	HURTZ BAL 12.1 RADAR
	BAL R-286		2000	2000
		*BAL 1.2	*LOC only.	GS 3.00° TCH 55
	0.9 NM	1.1 NM	3.7 NM	6.1 NM
CATEGORY	A	B	C	D
S-ILS 28	**343/24 200 (200-½)			
S-LOC 28	620/24	477 (500-½)	620/50	477 (500-1)
C CIRCLING	640-1 497 (500-1)	660-1 517 (600-1)	700-1½ 557 (600-1½)	860-2¼ 717 (800-2¼)
ZIXUS FIX MINIMUMS (DME REQUIRED)				
S-LOC 28	460/24 317 (400-½)			
C CIRCLING	640-1 497 (500-1)	660-1 517 (600-1)	700-1½ 557 (600-1½)	860-2¼ 717 (800-2¼)