

17173

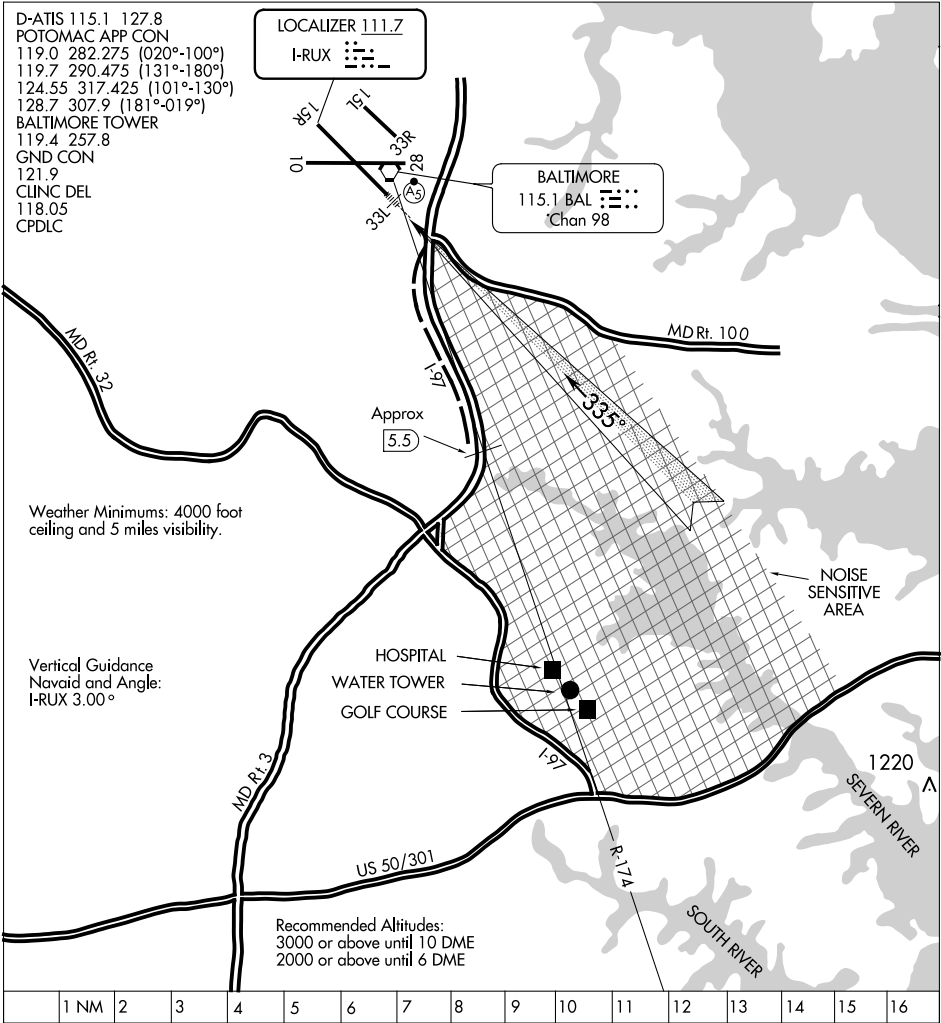
INTERSTATE VISUAL RWY 33L

BALTIMORE/
WASHINGTON INTL THURGOOD MARSHALL (BWI)
AL-804 (FAA)
BALTIMORE, MARYLAND

D-ATIS 115.1 127.8
 POTOMAC APP CON
 119.0 282.275 (020°-100°)
 119.7 290.475 (131°-180°)
 124.55 317.425 (101°-130°)
 128.7 307.9 (181°-019°)
 BALTIMORE TOWER
 119.4 257.8
 GND CON
 121.9
 CLINC DEL
 118.05
 CPDLC

LOCALIZER 111.7
 I-RUX

BALTIMORE
 115.1 BAL
 Chan 98



Weather Minimums: 4000 foot ceiling and 5 miles visibility.

Vertical Guidance
 Navaid and Angle:
 I-RUX 3.00°

Recommended Altitudes:
 3000 or above until 10 DME
 2000 or above until 6 DME

1	2	3	4	5	6	7	8	9	10	11	12	13	14	15	16
---	---	---	---	---	---	---	---	---	----	----	----	----	----	----	----

INTERSTATE VISUAL RWY 33L

Radar vectors will be provided to the BAL 174 RADIAL. When cleared for the Interstate Visual Runway 33L Approach, aircraft will proceed via the BAL 174 radial until over I-97 (Approx. 5.5 DME). Then via I-97 to join Runway 33L final approach course. Runway 33L ILS with MALSRS will be on and available for use. Noise sensitive area east of I-97. This procedure applicable to turbo-jets arriving via OTT VORTAC.

INTERSTATE VISUAL RWY 33L
 Amdt 1 05OCT00

BALTIMORE/
 WASHINGTON INTL THURGOOD MARSHALL (BWI)
 39°11'N-76°40'W
 BALTIMORE, MARYLAND

NE-3, 28 FEB 2019 to 28 MAR 2019

NE-3, 28 FEB 2019 to 28 MAR 2019