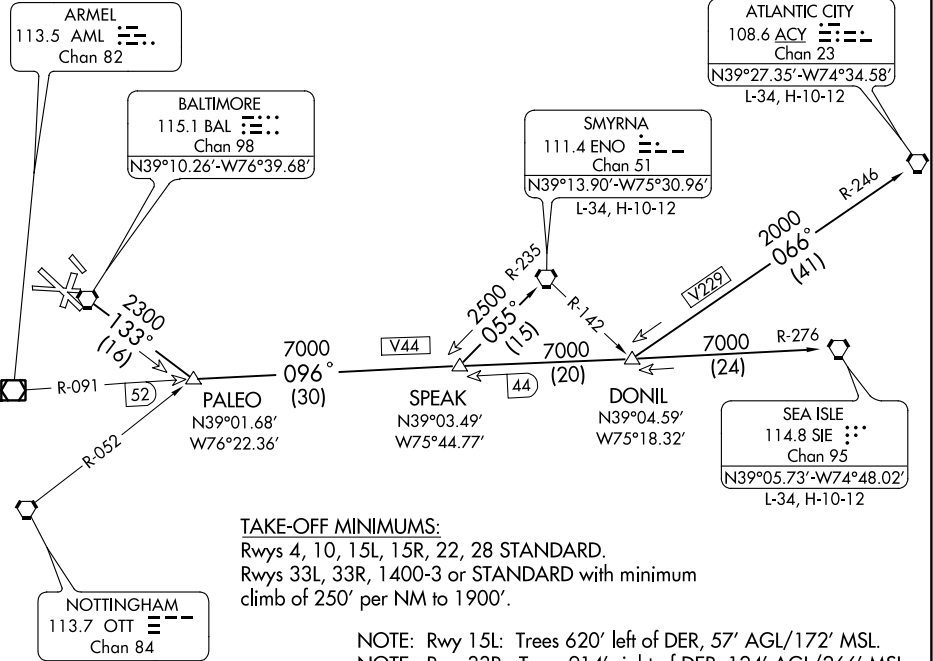


(PALEO3.PALEO) 17229

BALTIMORE/  
WASHINGTON INTL THURGOOD MARSHALL (BWI)  
AL-804 (FAA) BALTIMORE, MARYLAND

# PALEO THREE DEPARTURE

D-ATIS 115.1 127.8  
CLNC DEL 118.05  
GND CON 121.9  
BALTIMORE TOWER  
119.4 257.8  
POTOMAC DEP CON  
124.55  
CPDLC



**TAKE-OFF MINIMUMS:**

Rwys 4, 10, 15L, 15R, 22, 28 STANDARD.  
Rwys 33L, 33R, 1400-3 or STANDARD with minimum  
climb of 250' per NM to 1900'.

NOTE: Rwy 15L: Trees 620' left of DER, 57' AGL/172' MSL.  
NOTE: Rwy 33R: Trees 914' right of DER, 124' AGL/266' MSL.  
Trees 648' left of DER, 106' AGL/248' MSL.

NOTE: Chart not to scale.

## DEPARTURE ROUTE DESCRIPTION

**TAKE-OFF RWY 28:**

**JETS:** Fly runway heading until 3 DME, then turn left heading 150°. Thence . . . .

**PROPS:** Fly runway heading. Thence . . . .

**TAKE-OFF ALL OTHER RUNWAYS:** Fly runway heading. Thence . . . .

. . . . For vectors to transition or assigned route, expect clearance to filed altitude ten minutes after departure.

**ATLANTIC CITY TRANSITION (PALEO3.ACY):** From over BAL VORTAC via BAL R-133 to PALEO INT, then via SIE VORTAC R-276 to DONIL INT, then via ACY VORTAC R-246 to ACY VORTAC.

**SEA ISLE TRANSITION (PALEO3.SIE):** From over BAL VORTAC via BAL R-133 to PALEO INT, then via SIE VORTAC R-276 to SIE VORTAC.

**SMYRNA TRANSITION (PALEO3.ENO):** From over BAL VORTAC via BAL R-133 to PALEO INT, then via SIE VORTAC R-276 to SPEAK INT, then via ENO VORTAC R-235 to ENO VORTAC.

PALEO THREE DEPARTURE  
(PALEO3.PALEO) 05OCT00

BALTIMORE/  
WASHINGTON INTL THURGOOD MARSHALL (BWI)  
BALTIMORE, MARYLAND

NE-3, 28 FEB 2019 to 28 MAR 2019

NE-3, 28 FEB 2019 to 28 MAR 2019