

RAVNN SIX ARRIVAL (RNAV) Transition Routes

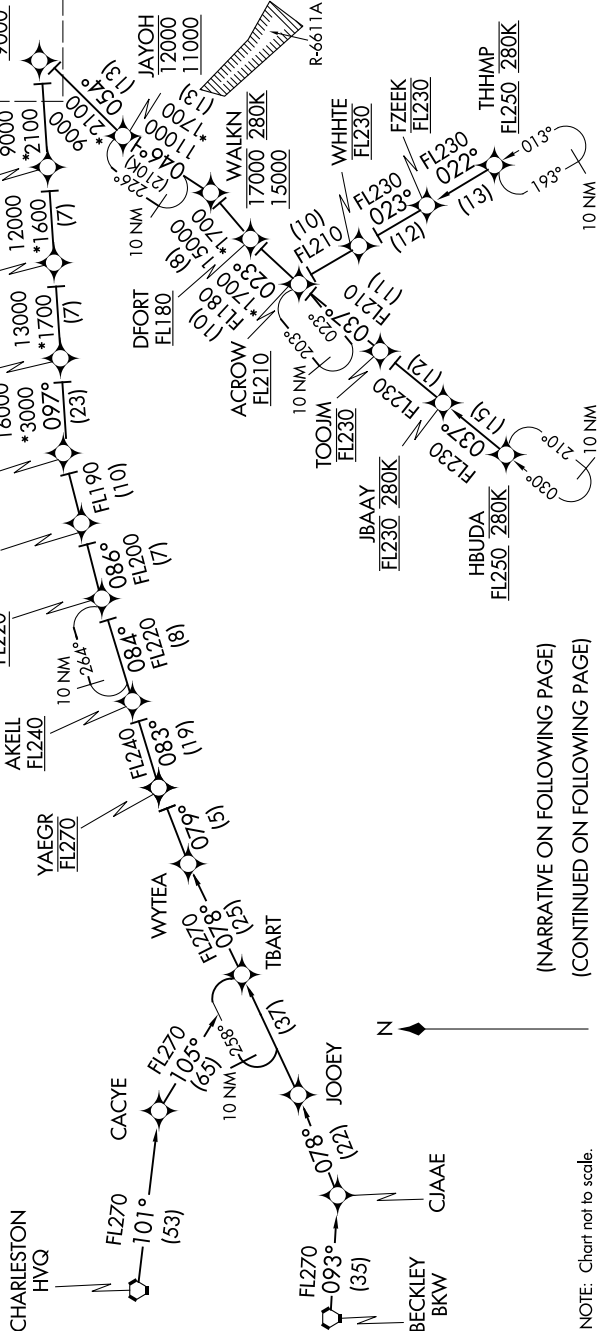
NE-3, 28 FEB 2019 to 28 MAR 2019

POTOMAC APP CON
128.35 270.275
BALTIMORE WASHINGTON INTL D-ATIS
115.1 127.8

- NOTE: RADAR required.
- NOTE: RNAV 1.
- NOTE: DME/DME/IRU or GPS required.
- NOTE: Turbojet aircraft only.
- NOTE: All part 91, 101, 103, 105, 125, 133, 135, and 137 flight operations are prohibited on the HVQ/BKW/JOOEY transitions.

- BECKLEY TRANSITION (BKW.RAVNN6)
- CHARLESTON TRANSITION (HVQ.RAVNN6)
- HBUDA TRANSITION (HBUDA.RAVNN6): (ATC assigned only).
- JOOEY TRANSITION (JOOEY.RAVNN6): (ATC assigned only).
- THHMP TRANSITION (THHMP.RAVNN6)

See following page for Arrival Routes.



(NARRATIVE ON FOLLOWING PAGE)
(CONTINUED ON FOLLOWING PAGE)

NOTE: Chart not to scale.

NE-3, 28 FEB 2019 to 28 MAR 2019