

APP CRS **285°**  
 Rwy ldg **9802**  
 TDZE **143**  
 Apt Elev **143**

# RNAV (RNP) Z RWY 28

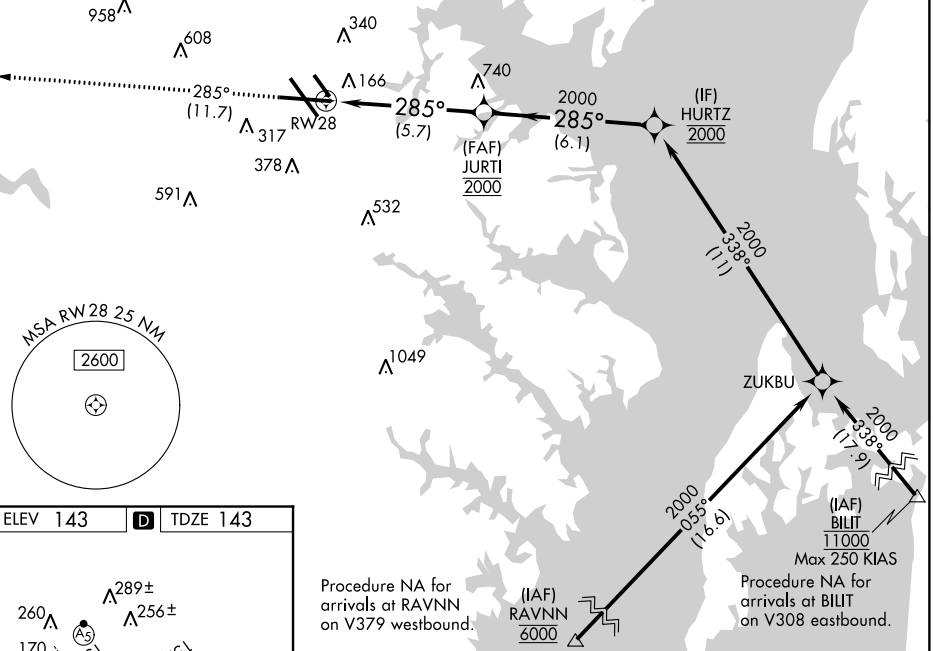
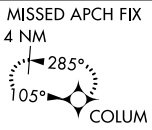
BALTIMORE/WASHINGTON INTL THURGOOD MARSHALL (BWI)

▼ For uncompensated Baro-VNAV systems, procedure NA below -12°C (11°F) or above 54°C (130°F). GPS Required. For inoperative MALSR, increase RNP 0.30 all Cats visibility to 1¼.

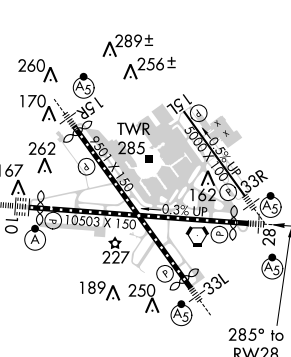


MISSED APPROACH: Climb to 2500 on track 285° to COLUM and hold.

D-ATIS <b>115.1 127.8</b>	POTOMAC APP CON (020°-100°) <b>119.7 290.475</b> (131°-180°) (101°-130°) <b>128.7 307.9</b> (181°-019°)	BALTIMORE TOWER <b>119.4 257.8</b>	GND CON <b>121.9</b>	CLNC DEL <b>118.05</b>
------------------------------	---	---------------------------------------	-------------------------	---------------------------

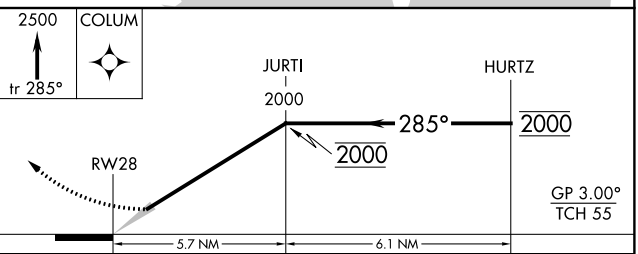


ELEV 143 **D** TDZE 143



Procedure NA for arrivals at RAVNN on V379 westbound.

Procedure NA for arrivals at BILIT on V308 eastbound.



CATEGORY	A	B	C	D
RNP 0.30 DA	521/45 378 (400-7%)			

## AUTHORIZATION REQUIRED

TDZ/CL Rwy 10 and 33L  
 REIL Rwy 15L and 33R  
 HIRL all rwy

NE-3, 28 FEB 2019 to 28 MAR 2019

NE-3, 28 FEB 2019 to 28 MAR 2019