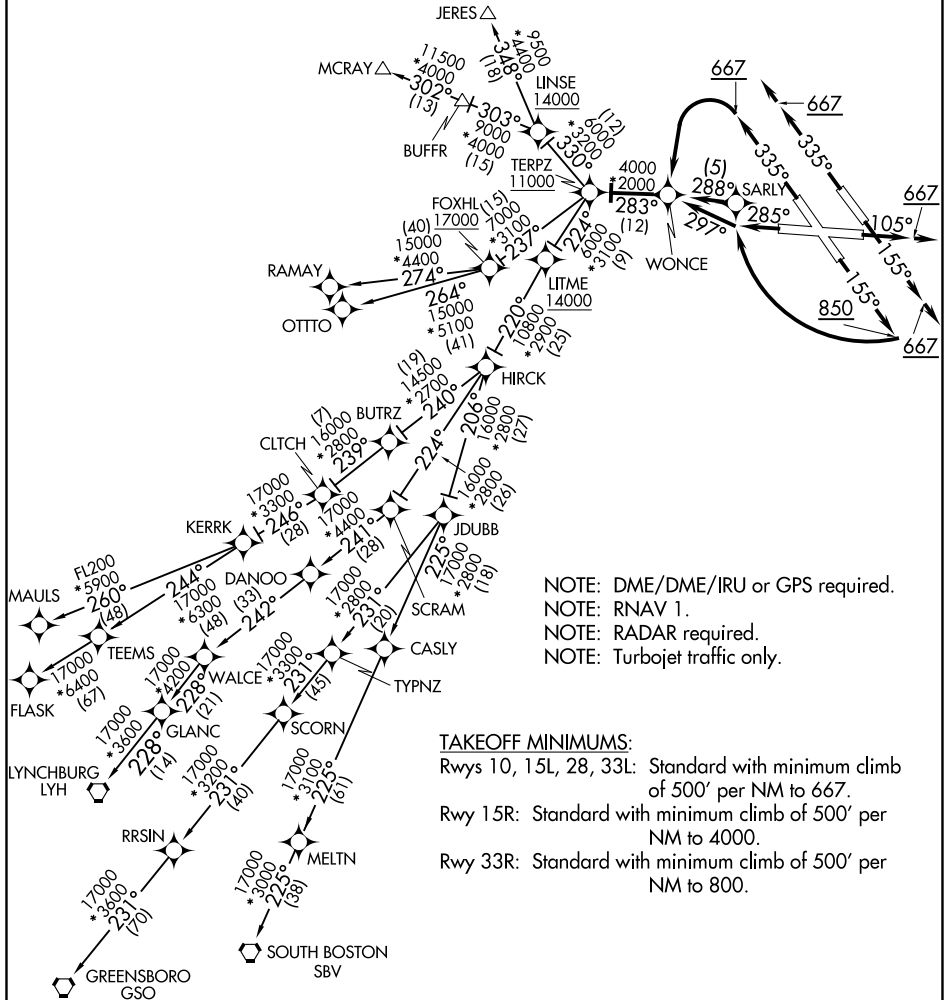


(TERPZ6.TERPZ) 17173
TERPZ SIX DEPARTURE (RNAV)

BALTIMORE/
 WASHINGTON INTL THURGOOD MARSHALL (BWI)
 BALTIMORE, MARYLAND
 AL-804

TOP ALTITUDE:
RAMAY, OTTTO, MAULS, FLASK,
SBV, LYH, GSO TRANSITIONS:
17000
JERES, MCRAY TRANSITIONS:
16000

D-ATIS
 115.1 127.8
 CLNC DEL
 118.05
 CPDLC
 GND CON
 121.9
 BALTIMORE TOWER
 119.4 257.8
 POTOMAC DEP CON
 128.7



NOTE: DME/DME/IRU or GPS required.
 NOTE: RNAV 1.
 NOTE: RADAR required.
 NOTE: Turbojet traffic only.

TAKEOFF MINIMUMS:
 Rwsy 10, 15L, 28, 33L: Standard with minimum climb of 500' per NM to 667.
 Rwy 15R: Standard with minimum climb of 500' per NM to 4000.
 Rwy 33R: Standard with minimum climb of 500' per NM to 800.

(NARRATIVE ON FOLLOWING PAGE)
 (NOTES CONTINUED ON FOLLOWING PAGE)

NOTE: Chart not to scale.
TERPZ SIX DEPARTURE (RNAV)
 (TERPZ6.TERPZ) 04FEB16

BALTIMORE/
 WASHINGTON INTL THURGOOD MARSHALL (BWI)
 BALTIMORE, MARYLAND

NE-3, 28 FEB 2019 to 28 MAR 2019

NE-3, 28 FEB 2019 to 28 MAR 2019