

WASHINGTON, DC

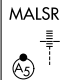
AL-5100 (FAA)

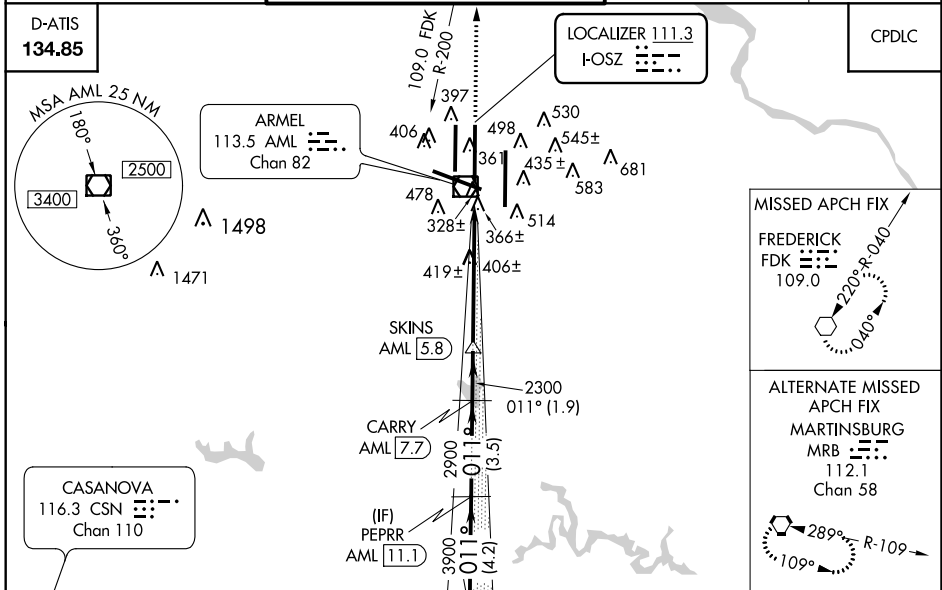
17117

LOC I-OSZ <b>111.3</b>	APP CRS <b>011°</b>	Rwy ldg TDZE <b>286</b> Apt Elev <b>313</b>
---------------------------	------------------------	---

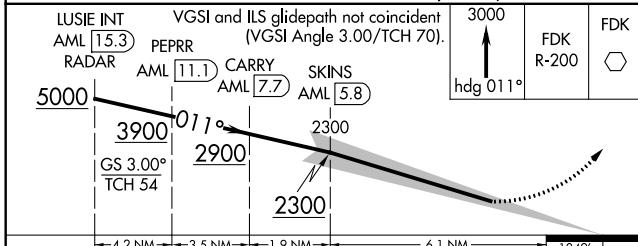
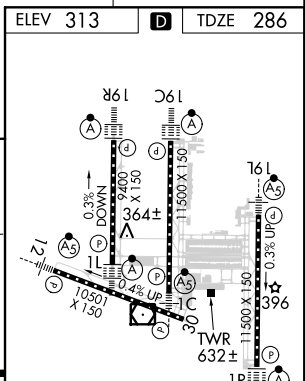
## ILS RWY 1C (SA CAT II)

### WASHINGTON DULLES INTL (IAD)

<p>▼ <b>DME from AML VOR/DME.</b> Simultaneous reception of I-OSZ and AML DME required.</p> <p>⚠ <b>Simultaneous approach authorized with ILS or LOC/DME Rwy 1L, ILS Rwy 1L (Cat II), ILS Rwy 1L (Cat III), ILS or LOC Rwy 1R, ILS Rwy 1R (Cat II), ILS Rwy 1R (Cat III).</b>                  Reduced lighting: Requires specific OPSPEC, MSPEC, or LOA approval and use of autoland or HUD to touchdown. DME required.</p>	<p>MALSR</p> 	<p><b>MISSED APPROACH:</b> Climb to 3000 on heading 011° and FDK VOR R-200 to FDK VOR and hold.</p>	
<p>POTOMAC APP CON  <b>120.45 306.925</b> (241°-330°)  <b>128.525 306.925</b> (091°-240°)  <b>126.1 338.25</b> (331°-090°)</p>	<p>DULLES TOWER  <b>120.1 317.8</b> (Rwy 1R/19L)  <b>120.25 348.6</b> (Rwy 1C/19C)  <b>134.425 348.6</b> (Rwys 1L/19R and 12/30)</p>	<p>GND CON  <b>121.9 317.8</b> (EAST)  <b>121.625 348.6</b> (WEST)</p>	<p>CLNC DEL  <b>135.7 317.8</b></p>



ELEV 313	<b>D</b>	TDZE 286
----------	----------	----------



CATEGORY	A	B	C	D
----------	---	---	---	---

RA 104/12 100 DA 386

**CATEGORY II ILS - SPECIAL AIRCREW & AIRCRAFT CERTIFICATION REQUIRED**

TDZ/CL Rwys 1C, 1L, 1R, 12, 19C and 19R  
 REIL Rwy 30  
 HIRL all Rwys

WASHINGTON, DC  
 Amdt 2C 07JAN16

38°57'N-78°27'W

WASHINGTON DULLES INTL (IAD)  
**ILS RWY 1C (SA CAT II)**

NE-3, 28 FEB 2019 to 28 MAR 2019