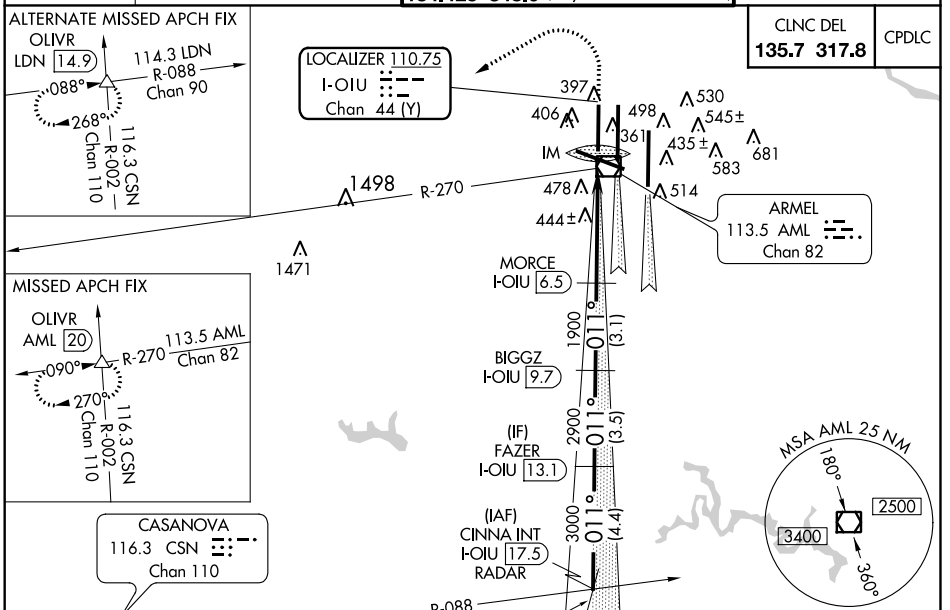


LOC/DME I-OIU <b>110.75</b> Chan <b>44</b> (Y)	APP CRS <b>011°</b>	Rwy Idg TDZE Apt Elev <b>9400</b> <b>296</b> <b>312</b>
--	------------------------	--

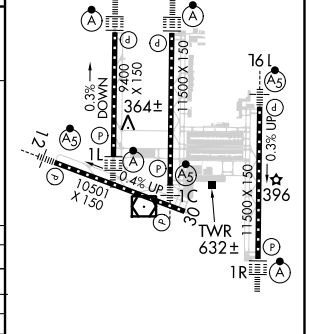
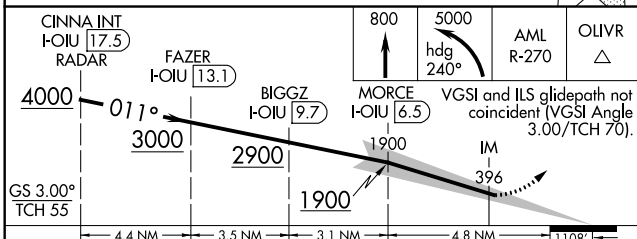
# ILS RWY 1L (CAT II & III)

## WASHINGTON DULLES INTL (IAD)

<b>⚠</b> Simultaneous approach authorized with ILS or LOC/DME Rwy 1C, ILS Rwy 1C (Cat III), RNAV (GPS) Y Rwy 1C, ILS or LOC Rwy 1R, ILS Rwy 1R (Cat II), ILS Rwy 1R (Cat III), RNAV (GPS) Y Rwy 1R.	ALSF-2 	MISSED APPROACH: Climb to 800 then climbing left turn to 5000 via heading 240° and AML VOR/DME R-270 to OLIVR INT/AML 20 DME and hold, continue climb-in-hold to 5000.



ELEV 312	<b>D</b>	TDZE 296
----------	----------	----------



CATEGORY	A	B	C	D
S-ILS 1L	CAT II RA 97/12 100 DA 396			
S-ILS 1L	CAT IIIa RVR 07			
S-ILS 1L	CAT IIIb RVR 06			
S-ILS 1L	CAT IIIc NA			

# CATEGORY II & III ILS - SPECIAL AIRCREW & AIRCRAFT CERTIFICATION REQUIRED

NE-3, 28 FEB 2019 to 28 MAR 2019

NE-3, 28 FEB 2019 to 28 MAR 2019