

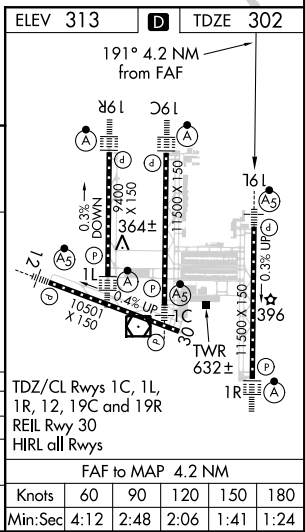
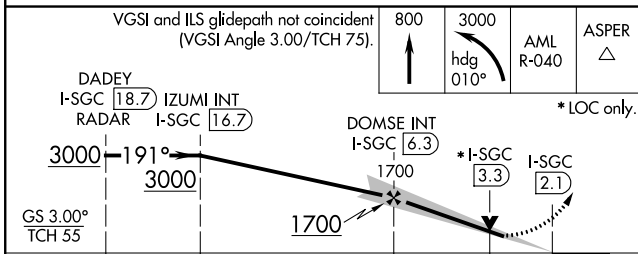
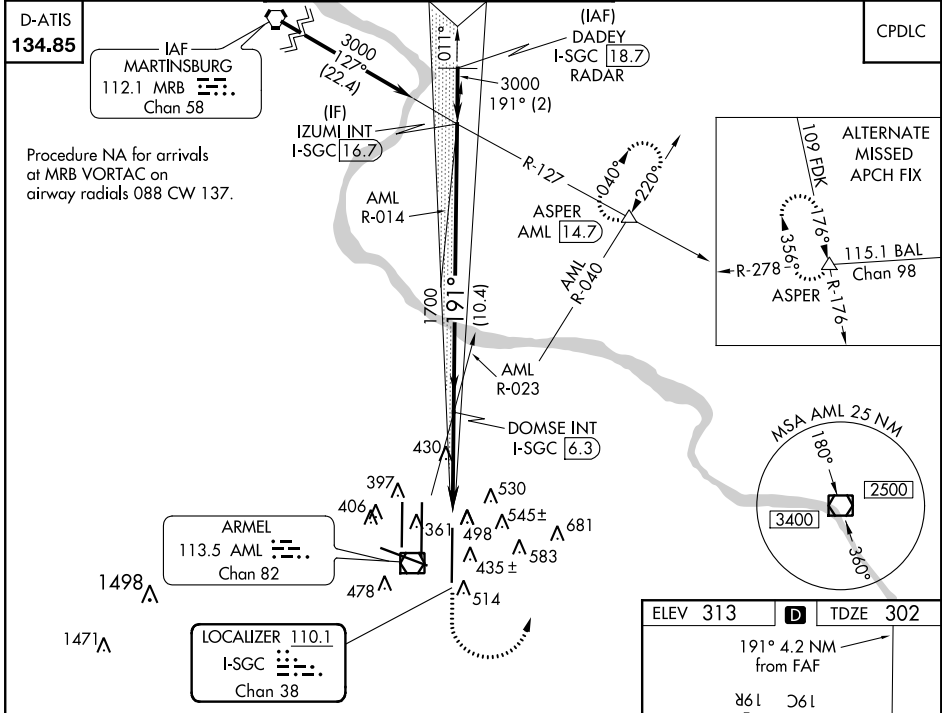
LOC/DME I-SGC <b>110.1</b> Chan <b>38</b>	APP CRS <b>191°</b>	Rwy Idg <b>11500</b> TDZE <b>302</b> Apt Elev <b>313</b>
---	------------------------	--

# ILS or LOC RWY 19L

WASHINGTON DULLES INTL (IAD)

<p><b>⚠</b> Simultaneous approach authorized with Rwy 19C or 19R. **1800 RVR authorized with the use of FD or AP or HUD to DA.</p>	MALSR 	MISSED APPROACH: Climb to 800 then climbing left turn to 3000 on heading 010° and AML VOR/DME R-040 to ASPER INT/AML 14.7 DME and hold.
	<p>POTOMAC APP CON <b>120.45 306.925</b> (241°-330°) <b>128.525 306.925</b> (091°-240°) <b>126.1 338.25</b> (331°-090°)</p>	

DULLES TOWER <b>120.1 317.8</b> (Rwy 1R/19L) <b>120.25 348.6</b> (Rwy 1C/19C) <b>134.425 348.6</b> (Rwys 1L/19R and 12/30)	GND CON <b>121.9 317.8</b> (EAST) <b>121.625 348.6</b> (WEST)	CLNC DEL <b>135.7 317.8</b>
---	---	--------------------------------



VGSI and ILS glidepath not coincident (VGSI Angle 3.00/TCH 75).	800	3000	AML R-040	ASPER
DADEY I-SGC (18.7) IZUMI INT I-SGC (16.7)	* LOC only.			
DOMSE INT I-SGC (6.3)	* I-SGC (3.3)	I-SGC (2.1)		
GS 3.00° TCH 55	2 NM	10.4 NM	3 NM	1.2 NM
CATEGORY	A	B	C	D
S-ILS 19L	** 502/24 200 (200-½)			
S-LOC 19L	740/24 438 (500-½)	740/40 438 (500-¾)	740/50 438 (500-1)	
CIRCLING	940-1 627 (700-1)	940-1¾ 627 (700-1¾)	940-2 627 (700-2)	

NE-3, 28 FEB 2019 to 28 MAR 2019

NE-3, 28 FEB 2019 to 28 MAR 2019