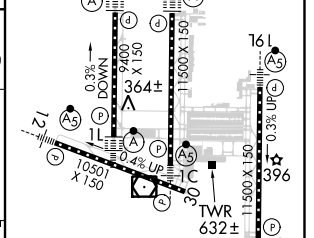
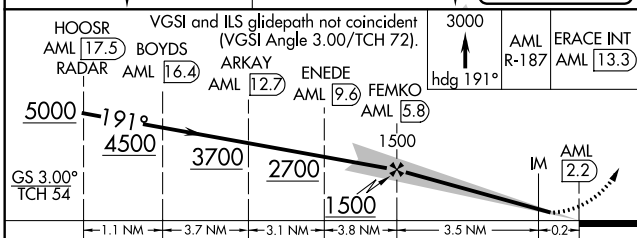
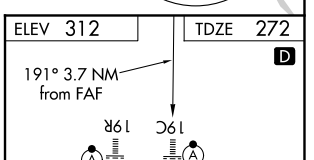
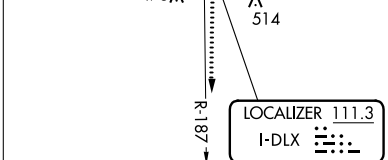
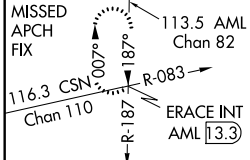
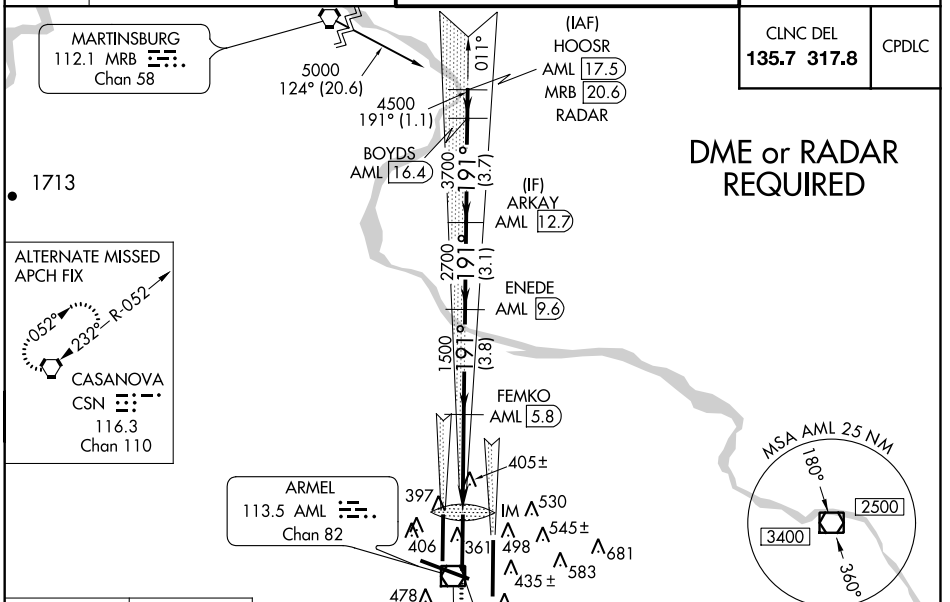


LOC I-DLX <b>111.3</b>	APP CRS <b>191°</b>	Rwy Idg <b>11500</b> TDZE <b>272</b> Apt Elev <b>312</b>
---------------------------	------------------------	--

# ILS or LOC/DME RWY 19C

WASHINGTON DULLES INTL (IAD)

<b>⚠</b> DME from AML VOR/DME. Simultaneous reception of I-DLX and AML DME required. Simultaneous approach authorized with ILS or LOC Rwy 19L, ILS Rwy 19L (Cat II), ILS or LOC/DME Rwy 19R, ILS Rwy 19R (Cat II), ILS Rwy 19R (Cat III).	ALSF-2 	MISSED APPROACH: Climb to 3000 via heading 191° and AML VOR/DME R-187 to ERACE INT/AML 13.3 DME and hold.



CATEGORY	A	B	C	D
S-ILS 19C	472/18		200 (200-½)	
S-LOC 19C	660/24		388 (400-½)	660/40 388 (400-¾)
CIRCLING	940-1 628 (700-1)		940-1¾ 628 (700-1¾)	940-2 628 (700-2)

TDZ/CL 1C, 1L, 1R, 12, 19C and 19R
REIL Rwy 30
HIRL all Rwys

NE-3, 28 FEB 2019 to 28 MAR 2019

NE-3, 28 FEB 2019 to 28 MAR 2019