

LOC I-OSZ <b>111.3</b>	APP CRS <b>011°</b>	Rwy ldg <b>11500</b>
		TDZE <b>286</b>
		Apt Elev <b>313</b>

# ILS or LOC/DME RWY 1C

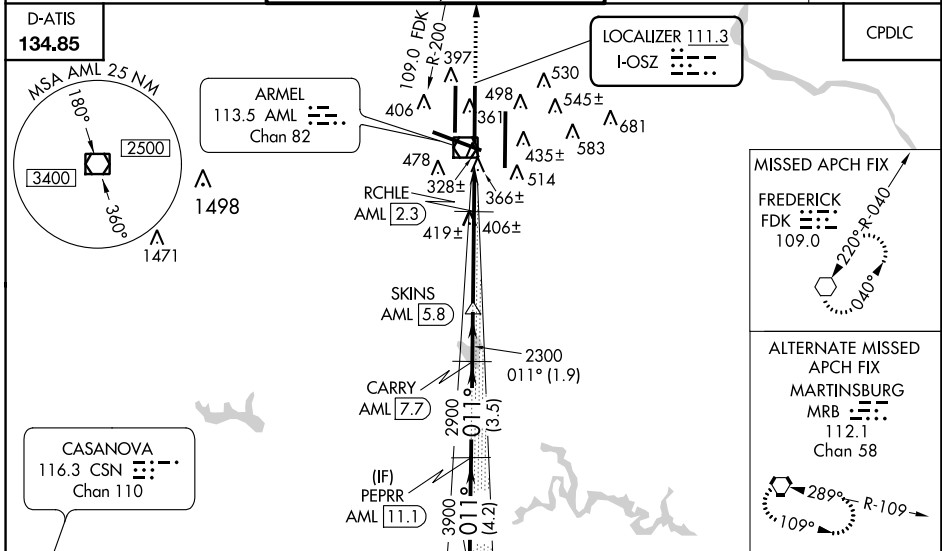
WASHINGTON DULLES INTL (IAD)

**⚠** DME from AML VOR/DME. Simultaneous reception of I-OSZ and AML DME required. Simultaneous approach authorized with ILS or LOC/DME Rwy 1L, ILS Rwy 1L (Cat II), ILS Rwy 1L (Cat III), ILS or LOC Rwy 1R, ILS Rwy 1R (Cat II), ILS Rwy 1R (Cat III). DME required. For Inoperative MALSRS, increase S-LOC Cats C/D visibility to RVR 5000. \*\*1800 RVR authorized with the use of FD or AP or HUD to DA.

**MALSRS**

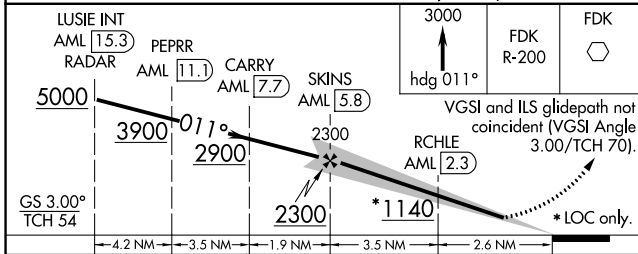
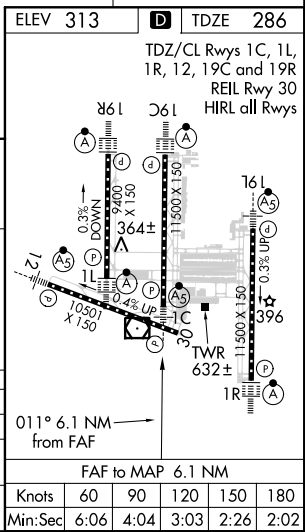
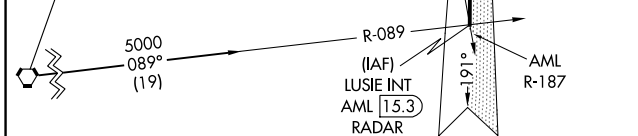
**MISSED APPROACH:**  
Climb to 3000 on heading 011° and FDK VOR R-200 to FDK VOR and hold.

POTOMAC APP CON <b>120.45 306.925</b> (241°-330°) <b>128.525 306.925</b> (091°-240°) <b>126.1 338.25</b> (331°-090°)	DULLES TOWER <b>120.1 317.8</b> (Rwy 1R/19L) <b>120.25 348.6</b> (Rwy 1C/19C) <b>134.425 348.6</b> (Rwys 1L/19R and 12/30)	GND CON <b>121.9 317.8</b> (EAST) <b>121.625 348.6</b> (WEST)	CLNC DEL <b>135.7 317.8</b>
---	---	---	--------------------------------



**MISSED APCH FIX**  
FREDERICK  
FDK  
109.0  
220° R-040  
040°

**ALTERNATE MISSED APCH FIX**  
MARTINSBURG  
MRB  
112.1  
Chan 58  
289° R-109  
109°



CATEGORY	A	B	C	D
S-ILS 1C		** 486/24	200 (200-½)	
S-LOC 1C		620/24	334 (400-½)	620/40 334 (400-¾)
CIRCLING	940-1	627 (700-1)	940-1¾ 627 (700-1¾)	940-2 627 (700-2)

NE-3, 28 FEB 2019 to 28 MAR 2019

NE-3, 28 FEB 2019 to 28 MAR 2019