

LOC/DME I-OIU <b>110.75</b> Chan <b>44 (Y)</b>	APP CRS <b>011°</b>	Rwy Idg <b>9400</b> TDZE <b>296</b> Apt Elev <b>312</b>
--	------------------------	--

# ILS or LOC/DME RWY 1L

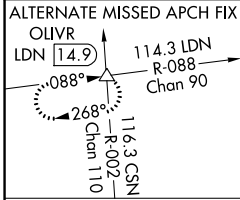
WASHINGTON DULLES INTL (IAD)

**Simultaneous approach authorized with ILS or LOC/DME Rwy 1C, ILS Rwy 1C (Cat II), RNAV (GPS) Y Rwy 1C, ILS or LOC Rwy 1R, ILS Rwy 1R (Cat II), ILS Rwy 1R (Cat III), RNAV (GPS) Y Rwy 1R.**

ALSF-2

**MISSED APPROACH:** Climb to 800 then climbing left turn to 5000 via heading 240° and AML VOR/DME R-270 to OLVR INT/AML 20 DME and hold, continue climb-in-hold to 5000.

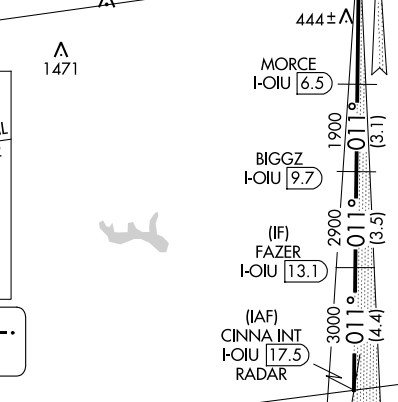
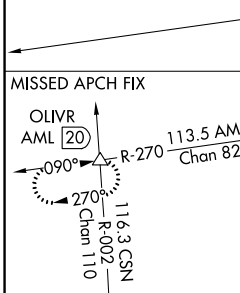
POTOMAC APP CON <b>120.45 306.925</b> (241°-330°) <b>128.525 306.925</b> (091°-240°) <b>126.1 338.25</b> (331°-090°)	DULLES TOWER <b>120.1 317.8</b> (Rwys 1R/19L) <b>120.25 348.6</b> (Rwy 1C/19C) <b>134.425 348.6</b> (Rwys 1L/19R and 12/30)	GND CON <b>121.9 317.8</b> (EAST) <b>121.625 348.6</b> (WEST)	CLNC DEL <b>135.7 317.8</b>
---	--	---	--------------------------------



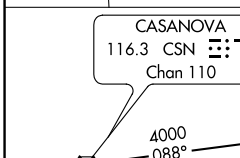
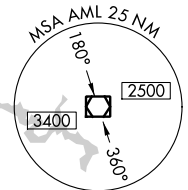
D-ATIS  
**134.85**

LOCALIZER 110.75  
I-OIU  
Chan 44 (Y)

CPDLC

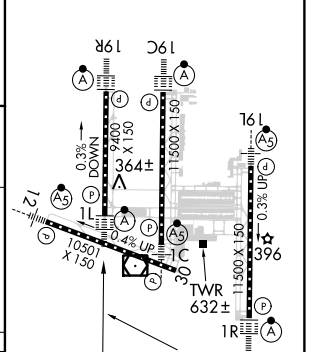
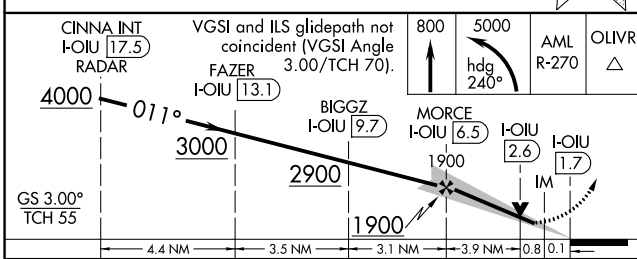


ARMEL  
113.5 AML  
Chan 82



ELEV	312	TDZE	296
------	-----	------	-----

## DME or RADAR REQUIRED



CATEGORY	A	B	C	D
S-ILS 1L	496/18 200 (200-½)			
S-LOC 1L	660/24 364 (400-½)		660/40 364 (400-¾)	
CIRCLING	940-1 628 (700-1)	940-1¾ 628 (700-1¾)	940-2 628 (700-2)	

NE-3, 28 FEB 2019 to 28 MAR 2019

NE-3, 28 FEB 2019 to 28 MAR 2019