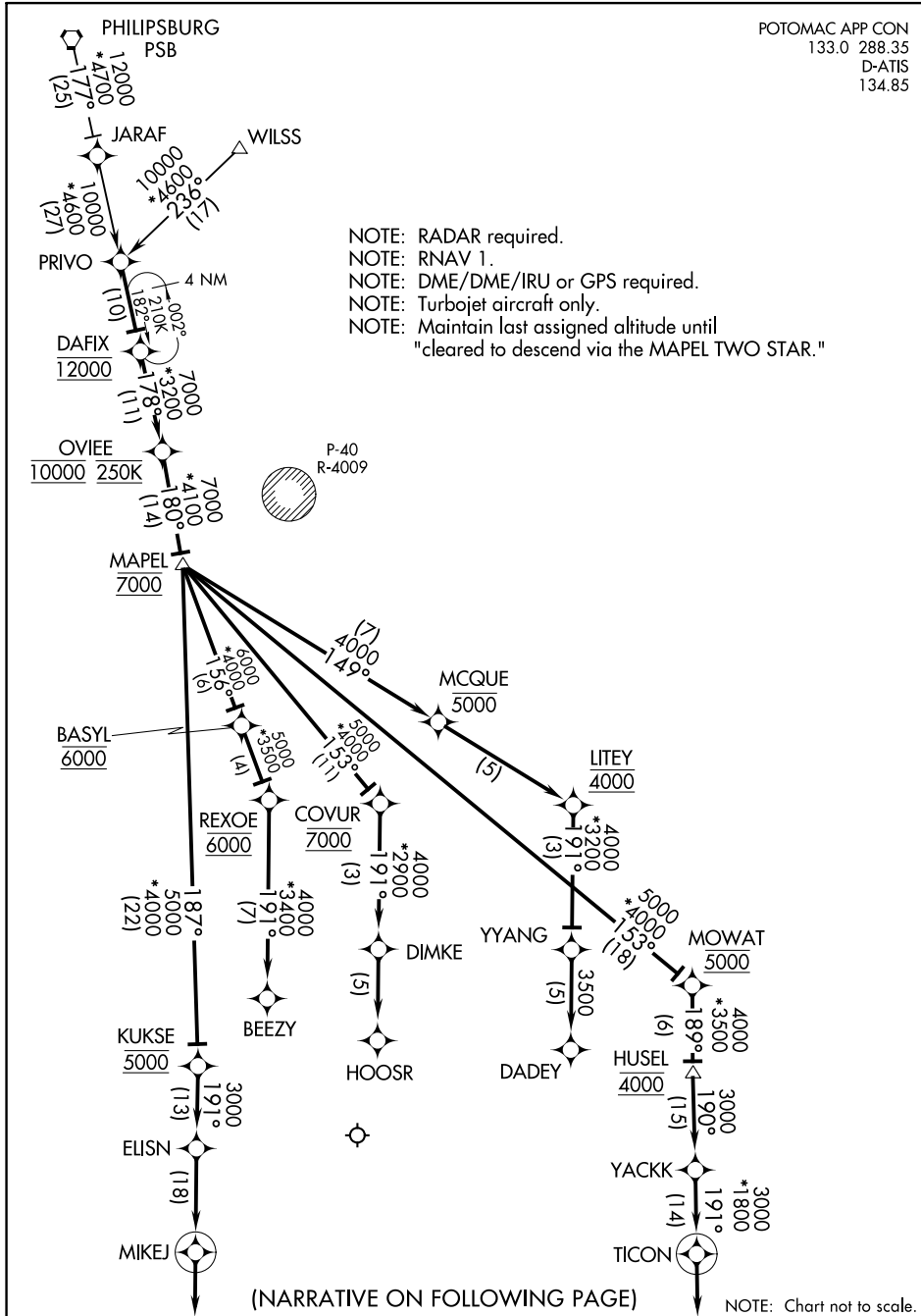


MAPEL TWO ARRIVAL (RNAV)

POTOMAC APP CON  
133.0 288.35  
D-ATIS  
134.85

- NOTE: RADAR required.
- NOTE: RNAV 1.
- NOTE: DME/DME/IRU or GPS required.
- NOTE: Turbojet aircraft only.
- NOTE: Maintain last assigned altitude until "cleared to descend via the MAPEL TWO STAR."



NE-3, 28 FEB 2019 to 28 MAR 2019

6100 NE-3, 28 FEB 2019 to 28 MAR 2019

MAPEL TWO ARRIVAL (RNAV)

NOTE: Chart not to scale.