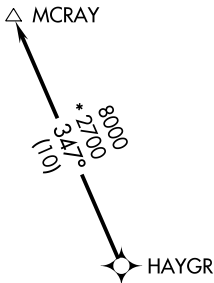
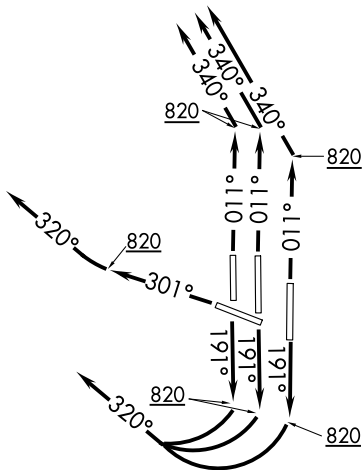


# MCRAY TWO DEPARTURE (RNAV)

D-ATIS  
 134.85  
 CLNC DEL  
 135.7 317.8  
 CPDLC  
 GND CON  
 121.9 317.8 (EAST)  
 121.625 348.6 (WEST)  
 DULLES TOWER  
 120.1 317.8 (Rwy 1R/19L)  
 120.25 348.6 (Rwys 1C/19C)  
 134.425 348.6 (Rwys 1L/19R, 12/30)  
 POTOMAC DEP CON  
 125.05 350.2



**TOP ALTITUDE:  
3000**



- NOTE: RNAV 1.
- NOTE: DME/DME/IRU or GPS required.
- NOTE: RADAR required.
- NOTE: Turbojets only.

**TAKEOFF MINIMUMS:**  
 Rwys 1L/C/R, 19L/C/R, 30:  
 Standard with minimum climb  
 of 500' per NM to 820.

NOTE: Chart not to scale.

## DEPARTURE ROUTE DESCRIPTION

**TAKEOFF RUNWAY 1L/C/R:** Climb heading 011° to 820, then on heading 340° or as assigned by ATC, expect RADAR vectors to HAYGR, thence . . . .

**TAKEOFF RUNWAYS 19L/C/R:** Climb heading 191° to 820, then right turn heading 320° or as assigned by ATC, expect RADAR vectors to HAYGR, thence . . . .

**TAKEOFF RUNWAY 30:** Climb heading 301° to 820, then on heading 320° or as assigned by ATC, expect RADAR vectors to HAYGR, thence . . . .

. . . . on track 347° to MCRAY, maintain 3000 or as directed by ATC. Expect clearance to filed altitude within ten (10) minutes after departure.

NE-3, 28 FEB 2019 to 28 MAR 2019

NE-3, 28 FEB 2019 to 28 MAR 2019