


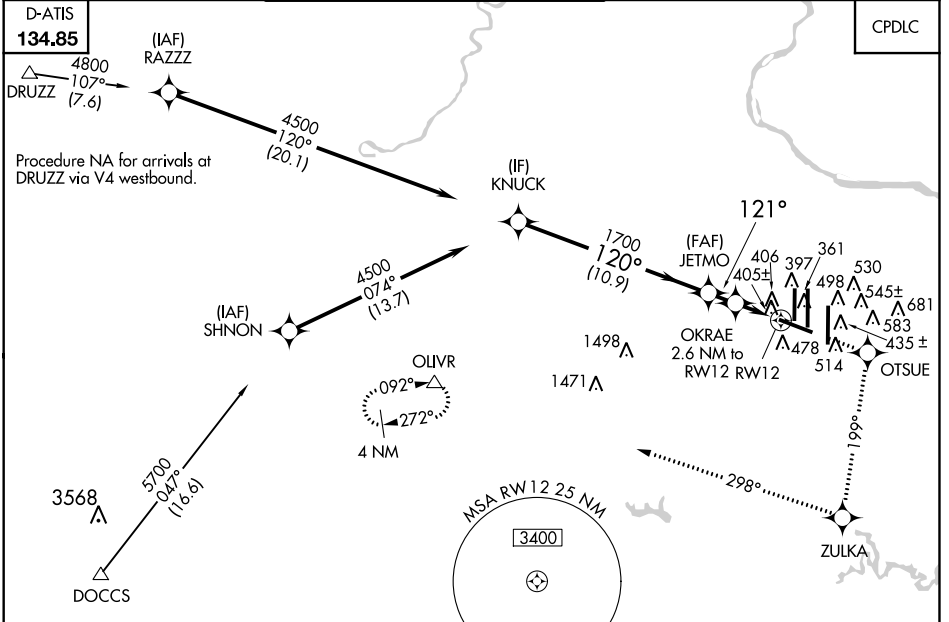
WAAS CH 86310 W12A	APP CRS 121°	Rwy Idg 10501 TDZE 310 Apt Elev 312
---------------------------------	------------------------	--

RNAV (GPS) RWY 12

WASHINGTON DULLES INTL (IAD)

<p>▼ For inoperative MALS, increase LNAV Cat D visibility to RVR 6000. For uncompensated Baro-VNAV systems, LNAV/VNAV NA below -15°C (5°F) or above 48°C (118°F). DME/DME RNP-0.3 NA.</p>	<p>MALS </p>	<p>MISSED APPROACH: Climb to 4000 direct OTSUE and via 199° track to ZULKA and right turn via 298° track to OLIVR and hold.</p>
--	---	---

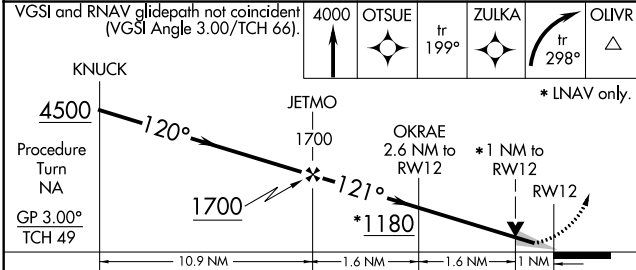
POTOMAC APP CON 120.45 306.925 (241°-330°) 128.525 306.925 (091°-240°) 126.1 338.25 (331°-090°)	DULLES TOWER 120.1 317.8 (Rwys 1R/19L) 120.25 348.6 (Rwy 1C/19C) 134.425 348.6 (Rwys 1L/19R and 12/30)	GND CON 121.9 317.8 (EAST) 121.625 348.6 (WEST)	CLNC DEL 135.7 317.8
---	--	---	--------------------------------



NE-3, 28 FEB 2019 to 28 MAR 2019

NE-3, 28 FEB 2019 to 28 MAR 2019

ELEV 312	D	TDZE 310
----------	----------	----------



VGSI and RNAV glidepath not coincident (VGSI Angle 3.00/TCH 66).	4000	OTSUE	ZULKA tr 199°	OLIVR tr 298°	*INAV only.
KNUCK	JETMO	OKRAE	RW12	RW12	
4500	1700	*1180	*1 NM to RW12		
Procedure Turn NA					
GP 3.00°					
TCH 49					
CATEGORY	A	B	C	D	
LPV DA		510/18	200 (200-½)		
LNAV/VNAV DA		737/50	427 (500-1)		
LNAV MDA		680/24	370 (400-½)	680/50	
				370 (400-1)	
CIRCLING	940-1	628 (700-1)	940-1¾	940-2	
			628 (700-1¾)	628 (700-2)	

