


WAAS CH <b>97509</b> <b>W01B</b>	APP CRS <b>011°</b>	Rwy Idg <b>11500</b> TDZE <b>286</b> Apt Elev <b>312</b>
--	------------------------	--

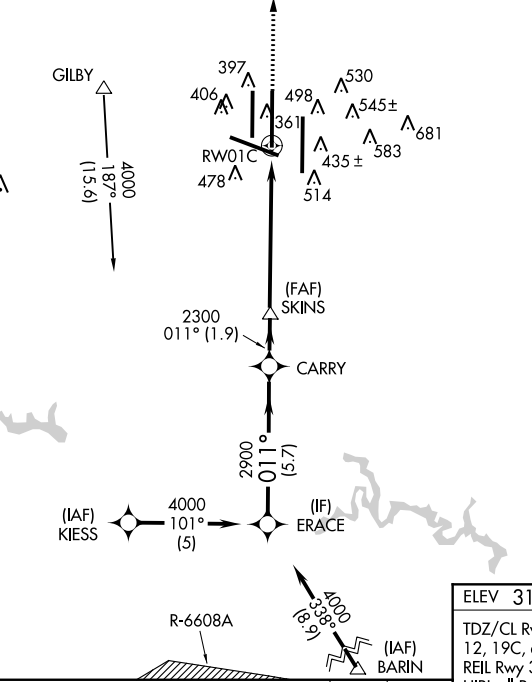
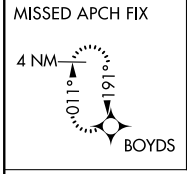
# RNAV (GPS) Y RWY 1C

WASHINGTON DULLES INTL (IAD)

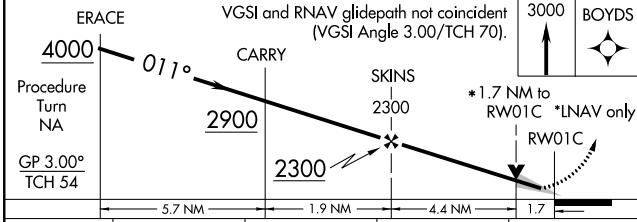
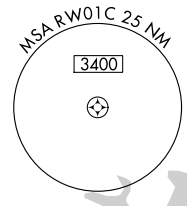
▼ For uncompensated Baro-VNAV systems, LNAV/VNAV NA below -15°C (5°F) or above 48°C (118°F). DME/DME RNP-0.3 NA. Simultaneous approach authorized with ILS or LOC/DME Rwy 1L, ILS Rwy 1L (Cat II), ILS Rwy 1L (Cat III), ILS or LOC Rwy 1R, ILS Rwy 1R (Cat II), ILS Rwy 1R (Cat III). LNAV procedure NA during simultaneous operations. Use of FD or AP providing RNAV track guidance required during simultaneous operations.  
 \*\*RVR 1800 authorized with use of FD or AP or HUD to DA.

MALSR  
  
 MISSED APPROACH:  
 Climb to 3000 direct  
 BOYDS and hold.

D-ATIS <b>134.85</b>	POTOMAC APP CON <b>120.45 306.925</b> (241°-330°) <b>128.525 306.925</b> (091°-240°) <b>126.1 338.25</b> (331°-090°)	DULLES TOWER <b>120.1 317.8</b> (Rwy 1R/19L) <b>120.25 348.6</b> (Rwy 1C/19C) <b>134.425 348.6</b> (Rwys 1L/19R and 12/30)	GND CON <b>121.9 317.8</b> (EAST) <b>121.625 348.6</b> (WEST)
-------------------------	---	---	---



CLNC DEL <b>135.7 317.8</b>	CPDLC
--------------------------------	-------



ELEV 312	<b>D</b>	TDZE 286
----------	----------	----------

TDZ/CL Rwys 1C, 1L, 1R, 12, 19C, and 19R  
 REIL Rwy 30  
 HIRL all Rwys

161, 196, 161, 396, 364±, 632±, 1500 X 150, 1050 X 150, 0.3% DOWN, 0.4% UP, 0.3% UP, 1R, 1C, 1L, TVWR

CATEGORY	A	B	C	D
LPV DA **		486/24	200 (200-1/2)	
LNAV/VNAV DA		801/60	515 (600-1 1/4)	
LNAV MDA	900/24	614 (600-1/2)	900/60 614 (600-1 1/4)	900-1 1/2 614 (600-1 1/2)
CIRCLING	940-1	628 (700-1)	940-1 1/4 628 (700-1 3/4)	940-2 628 (700-2)

NE-3, 28 FEB 2019 to 28 MAR 2019

NE-3, 28 FEB 2019 to 28 MAR 2019