

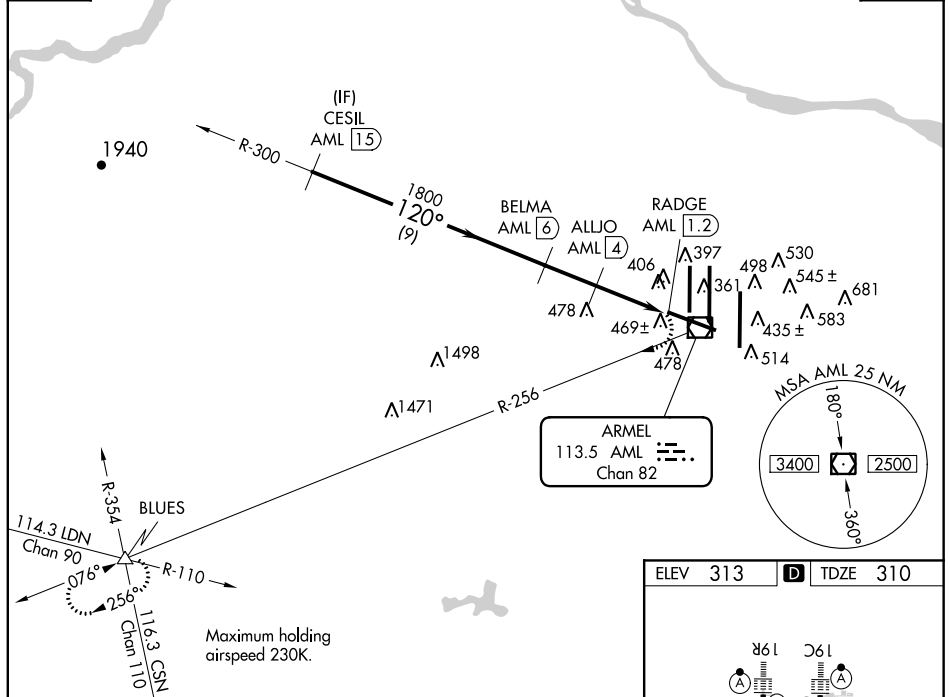
VOR/DME AML <b>113.5</b> Chan <b>82</b>	APP CRS <b>120°</b>	Rwy Idg TDZE Apt Elev	<b>10501</b> <b>310</b> <b>313</b>
---	------------------------	-----------------------------	--

# VOR/DME RWY 12

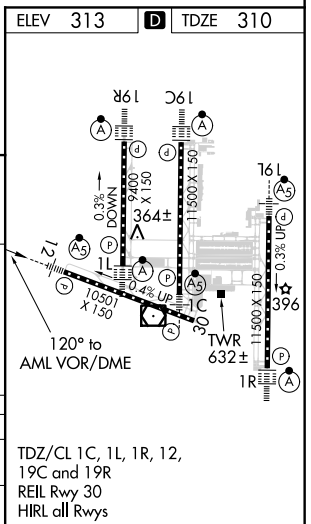
WASHINGTON DULLES INTL (IAD)

POTOMAC APP CON <b>120.45 306.925</b> (241°-330°) <b>128.525 306.925</b> (091°-240°) <b>126.1 338.25</b> (331°-090°)	DULLES TOWER <b>120.1 317.8</b> (Rwy 1R/19L) <b>120.25 348.6</b> (Rwy 1C/19C) <b>134.425 348.6</b> (Rwys 1L/19R and 12/30)	GND CON <b>121.9 317.8</b> (EAST) <b>121.625 348.6</b> (WEST)	CLNC DEL <b>135.7 317.8</b>
	MALSR  MISSED APPROACH: Climbing right turn to 4000 on AML VOR/DME R-256 to BLUES INT and hold.		

D-ATIS <b>134.85</b>	<h2>RADAR REQUIRED</h2>	CPDLC
-------------------------	-------------------------	-------



	CESIL AML 15	BELMA AML 6	ALLJO AML 4	RADGE AML 1.2	4000	AML R-256	BLUES
	1800	1200	1200	1200	1200		
	9 NM	2 NM	1.7 NM	1.2			
CATEGORY	A	B	C	D			
S-12	740/24	430 (500-½)	740/40	430 (500-¾)			
CIRCLING	940-1	627 (700-1)	940-1¾ 627 (700-1¾)	940-2 627 (700-2)			



NE-3, 28 FEB 2019 to 28 MAR 2019

NE-3, 28 FEB 2019 to 28 MAR 2019