


APP CRS	Rwy Idg	6800
072°	TDZE	1175
	Apt Elev	1175

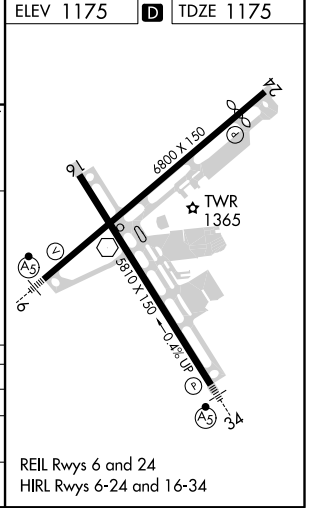
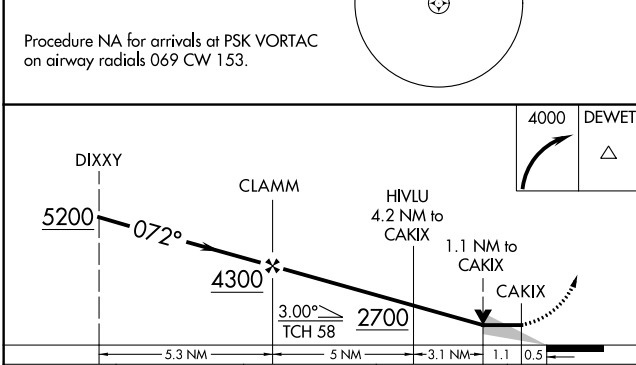
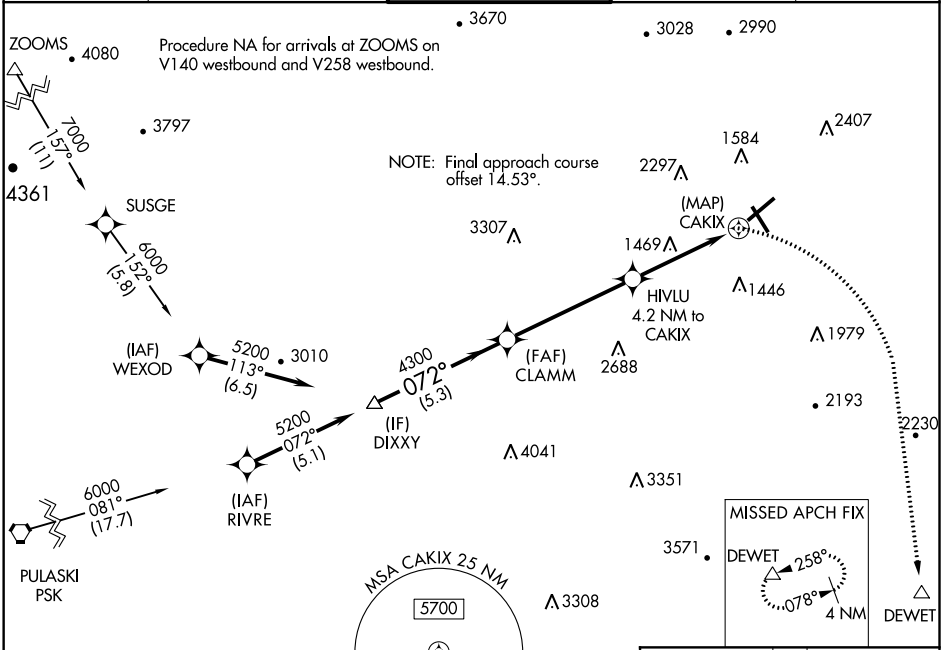
RNAV (GPS) RWY 6

ROANOKE-BLACKSBURG RGNL/WOODRUM FIELD (R.O.A)

⚠ Circling NA northwest of Rwy 6-24. DME/DME RNP-0.3 NA.
⚠ **Missed approach requires minimum climb of 276 feet per NM to 2700.
 For inop MALSR, increase LNAV** Cat A and B visibility to 1 and LNAV Cat A visibility to 1, Cat C and D visibility to 2½ mile.

MALSR
 MISSED APPROACH: Climbing right turn to 4000 direct DEWET and hold.

ATIS 132.375	ROANOKE APP CON 126.9 339.8	ROANOKE TOWER 118.3 257.8	GND CON 121.9 257.8	CLNC DEL 119.7
------------------------	---------------------------------------	-------------------------------------	-------------------------------	--------------------------



CATEGORY	A	B	C	D
LNAV MDA**	1720-¾	545 (600-¾)	1720-1⅞	545 (600-1⅞)
LNAV MDA	1980-¾	805 (900-¾)	1980-1⅞	805 (900-1⅞)
C CIRCLING	1980-1 805 (900-1)	1980-1¼ 805 (900-1¼)	2420-3 1245 (1300-3)	2800-3 1625 (1700-3)

REIL Rwy 6 and 24
 HIRL Rwy 6-24 and 16-34

NE-3, 28 MAR 2019 to 25 APR 2019

NE-3, 28 MAR 2019 to 25 APR 2019